

MDC ACOUSTIC SOLUTIONS

FEATURING **zintra**[®]

847-437-4000 | mdc.is/zintra



Zintra Textile Braid | Color: Saffron

TEXTILE

Technical Specifications

JULY 2025



Zintra Textile Burlap | Color: Linen

The look of fabric, the performance of Zintra. Experience the luxurious appearance of woven fabrics with the superior acoustic performance of Zintra.

Our new Textile Print collection authentically captures the natural intricacies of traditional textiles, complemented by the subtle nuances of PET, to bring depth and richness and a refined, fabric-like aesthetic.

Available in 19 Pantone-matched colorways, including unique juxtaposed tones, Zintra Textile introduces colors you won't find anywhere else. Harnessing micro-textures and delicate tone-on-tone depth, Zintra Textile redefines acoustic design, seamlessly blending material innovation with artistic refinement.

MDC ACOUSTIC SOLUTIONS
FEATURING **zintra**

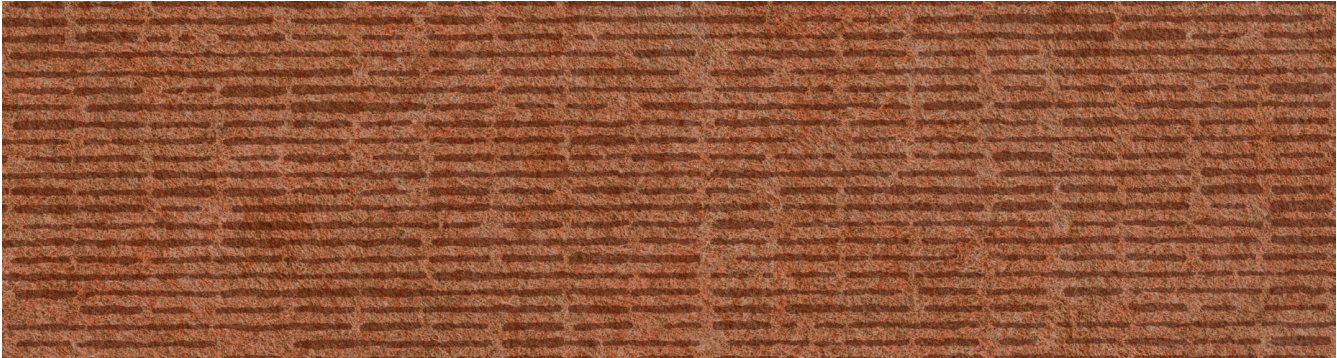


Zintra Textile Herring | Color: Cadet



Zintra Textile Loom | Color: Ivory

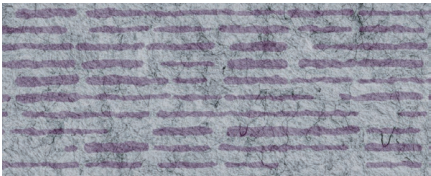
LOOM - available in 19 colors



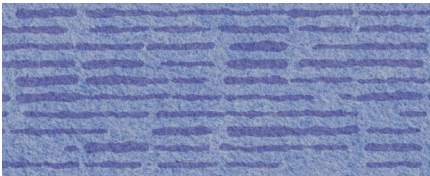
Saffron



Parchment



Smoke



Sky



Pebble



Chambray



Frost



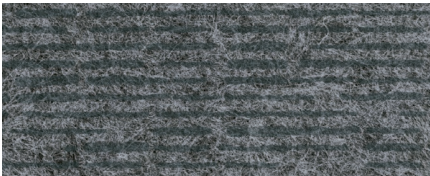
Ivory



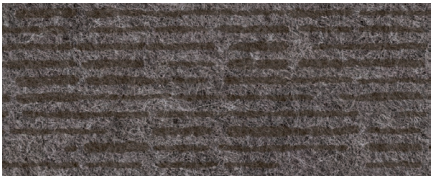
Linen



Ecru



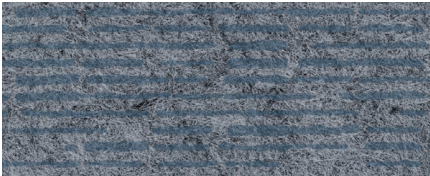
Pewter



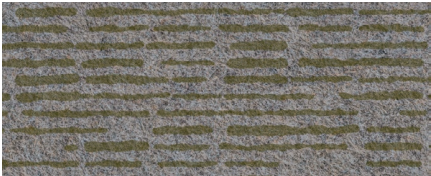
Fossil



Greige



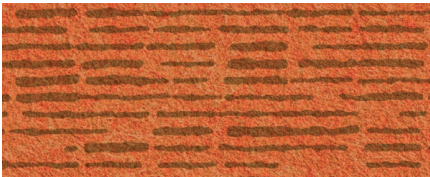
Cadet



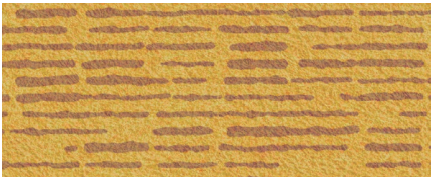
Storm



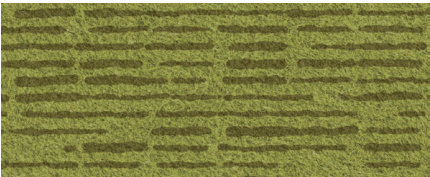
Meadow



Mandarin



Sunshine



Grass

HERRING - available in 19 colors



Saffron



Parchment



Smoke



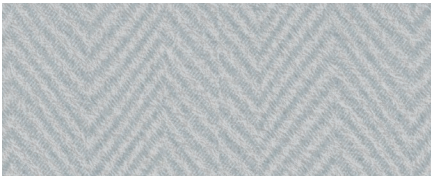
Sky



Pebble



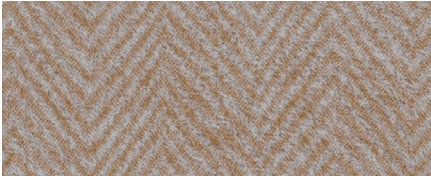
Chambray



Frost



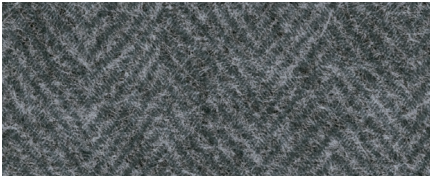
Ivory



Linen



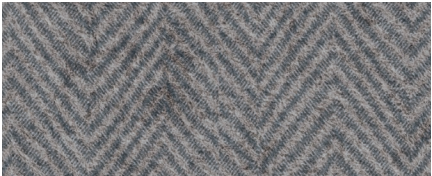
Ecru



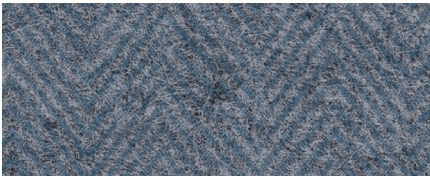
Pewter



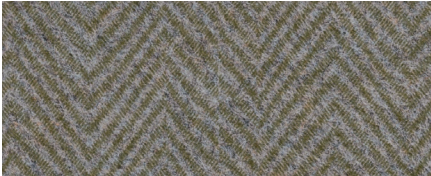
Fossil



Greige



Cadet



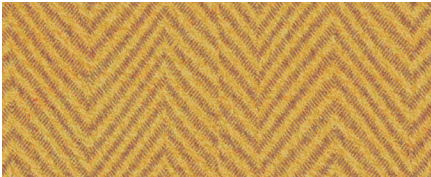
Storm



Meadow



Mandarin

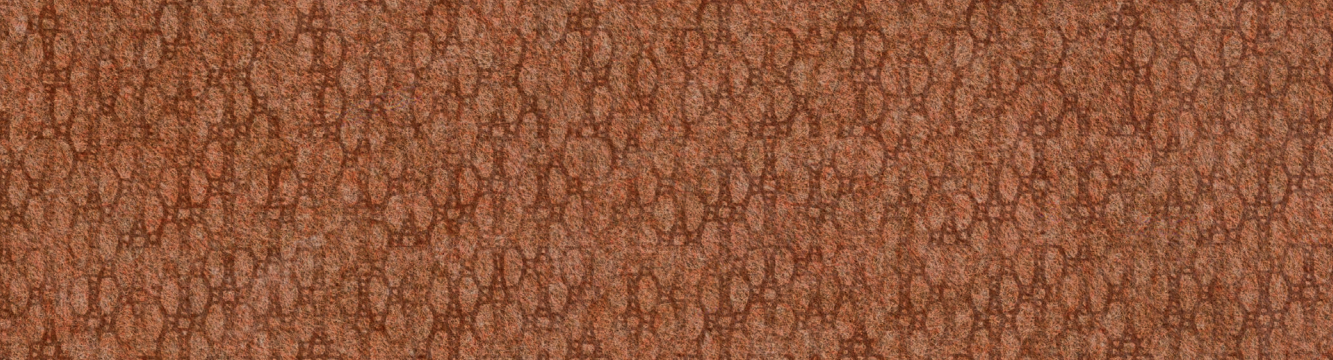


Sunshine

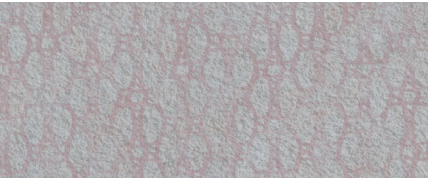


Grass

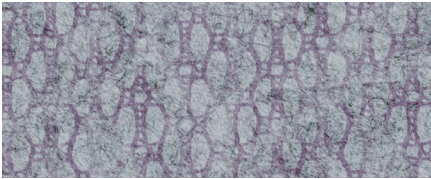
BRAID - available in 19 colors



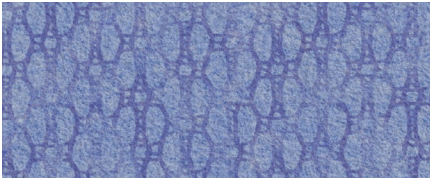
Saffron



Parchment



Smoke



Sky



Pebble



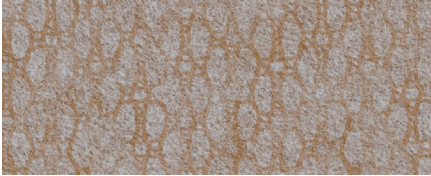
Chambray



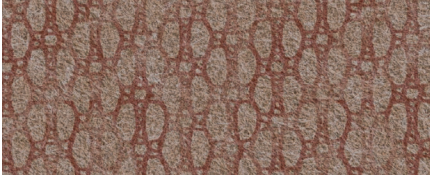
Frost



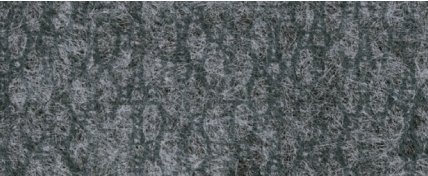
Ivory



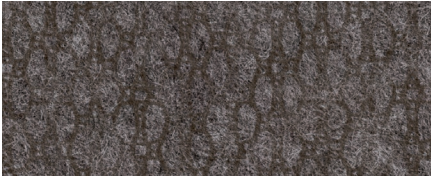
Linen



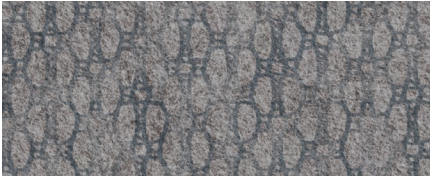
Ecru



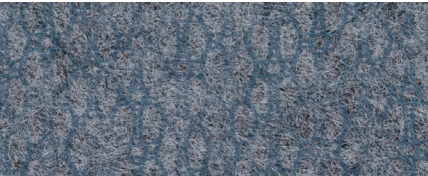
Pewter



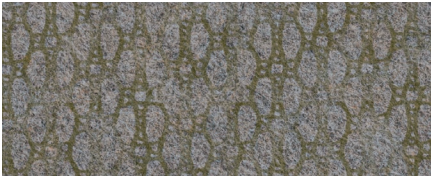
Fossil



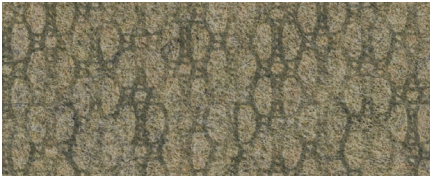
Greige



Cadet



Storm



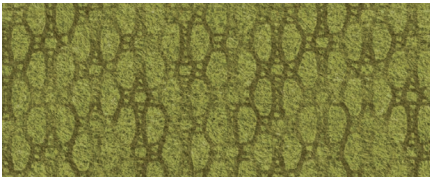
Meadow



Mandarin

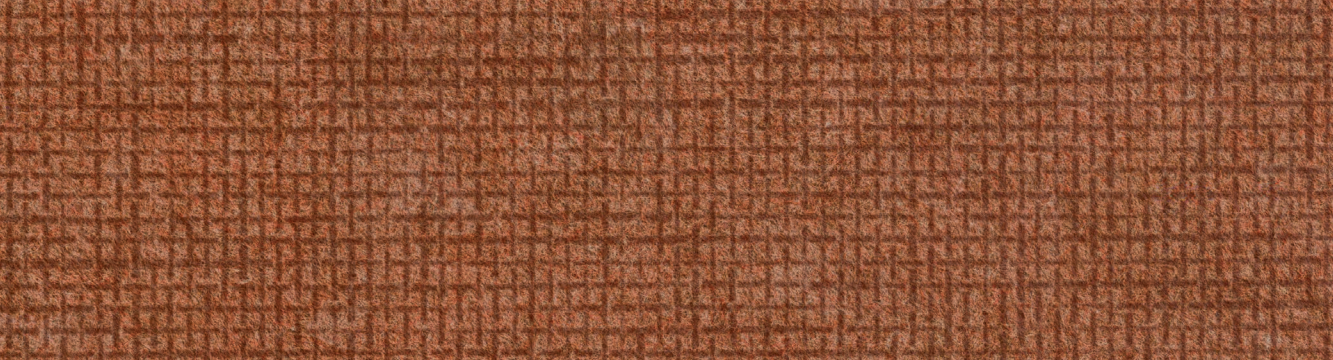


Sunshine



Grass

BURLAP - available in 19 colors



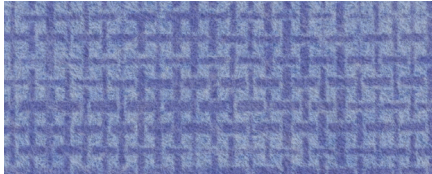
Saffron



Parchment



Smoke



Sky



Pebble



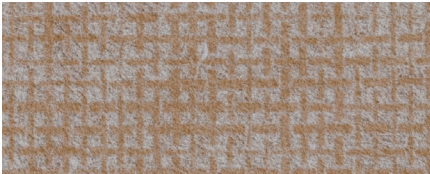
Chambray



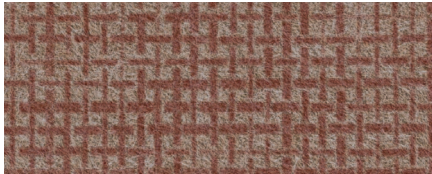
Frost



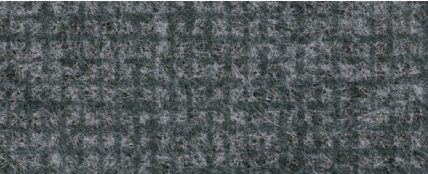
Ivory



Linen



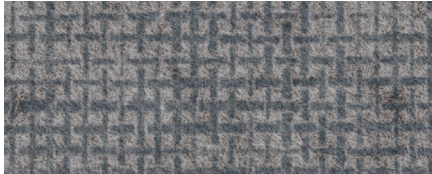
Ecru



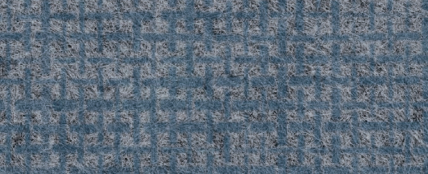
Pewter



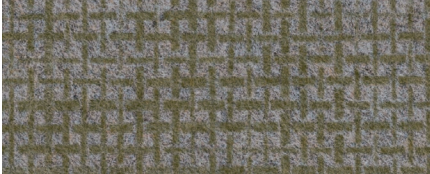
Fossil



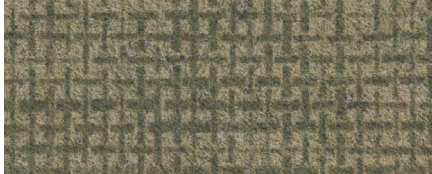
Greige



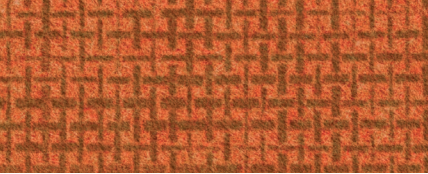
Cadet



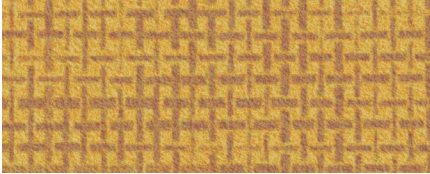
Storm



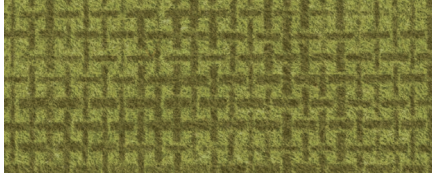
Meadow



Mandarin



Sunshine



Grass

ACOUSTIC RATING

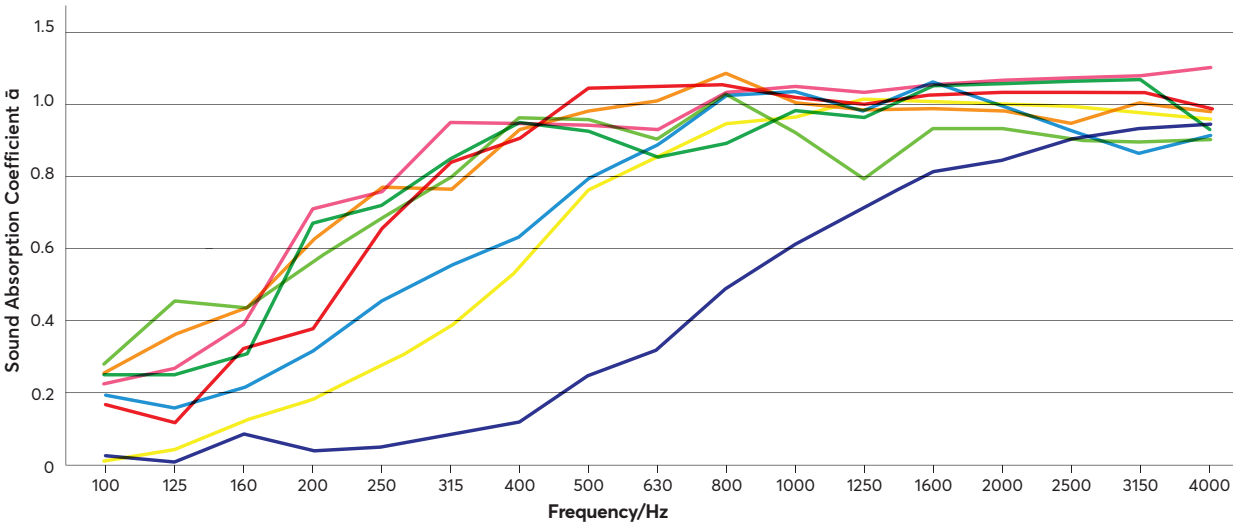
Society for Testing and Materials (ASTM) and by the International Standards Organisation (ISO).

The properties of a space - its dimensions, the materials used, and how they are applied - define how sound is transmitted.

The ability of a material to absorb sound is critical to good acoustics, which is calculated as the Noise Reduction Coefficient (NRC), Sound Absorption Average (SAA) and Weight Sound Absorption Average (aw). Our products are independently tested by third-party test labs that have been certified by The American Society for Testing and Materials (ASTM) and by the International Standards Organization (ISO).

Zintra products have been tested according to ASTM C423-17 and received NRC ratings ranging from 0.45 - 1.10, depending on its depth, shape and the distance it's installed from a surface.

| Frequency/Hz | | 100 | 125 | 160 | 200 | 250 | 315 | 400 | 500 | 630 | 800 | 1000 | 1250 | 1600 | 2000 | 2500 | 3150 | 4000 | SAA | NRC | ā |
|--------------|-----|------|------|-------|------|------|------|------|------|------|------|------|------|------|------|------|------|------|------|------|------|
| zintra ½" | 0" | 0.03 | 0.01 | 0.090 | 0.04 | 0.05 | 0.09 | 0.12 | 0.25 | 0.32 | 0.49 | 0.61 | 0.72 | 0.82 | 0.85 | 0.91 | 0.94 | 0.95 | 0.44 | 0.45 | 0.30 |
| | 2" | 0.20 | 0.16 | 0.22 | 0.32 | 0.46 | 0.56 | 0.63 | 0.80 | 0.89 | 1.03 | 1.04 | 0.99 | 1.07 | 1.00 | 0.93 | 0.87 | 0.92 | 0.81 | 0.85 | 0.75 |
| | 6" | 0.29 | 0.46 | 0.44 | 0.57 | 0.69 | 0.81 | 0.97 | 0.96 | 0.91 | 1.04 | 0.92 | 0.80 | 0.94 | 0.94 | 0.91 | 0.90 | 0.91 | 0.87 | 0.90 | 0.95 |
| | 12" | 0.22 | 0.22 | 0.34 | 0.66 | 0.73 | 0.83 | 0.96 | 0.91 | 0.84 | 0.89 | 0.98 | 0.97 | 1.06 | 1.13 | 1.17 | 1.21 | 1.21 | 0.93 | 0.95 | 0.95 |
| zintra 1" | 0" | 0.01 | 0.04 | 0.13 | 0.61 | 0.77 | 0.77 | 0.92 | 0.98 | 1.04 | 1.09 | 1.00 | 0.97 | 0.97 | 0.96 | 0.93 | 1.00 | 0.99 | 0.75 | 0.75 | 0.60 |
| | 2" | 0.25 | 0.36 | 0.42 | 0.66 | 0.69 | 0.77 | 0.88 | 0.99 | 0.90 | 0.92 | 0.86 | 0.90 | 0.97 | 1.00 | 0.97 | 0.99 | 1.00 | 0.92 | 0.95 | 0.95 |
| | 6" | 0.17 | 0.12 | 0.34 | 0.38 | 0.63 | 0.83 | 0.91 | 1.10 | 1.14 | 1.13 | 1.06 | 1.02 | 1.13 | 1.14 | 1.15 | 1.18 | 1.14 | 0.97 | 1.00 | 0.90 |
| | 12" | 0.21 | 0.26 | 0.39 | 0.71 | 0.77 | 0.95 | 0.94 | 0.93 | 0.91 | 1.07 | 1.19 | 1.13 | 1.18 | 1.21 | 1.22 | 1.26 | 1.25 | 1.02 | 1.00 | 1.00 |



DIMENSIONS

Nominal 4' x 9' x ½" (exact size 48.25" x 110" x ½")
 Thickness tolerance +/- .02"
 Width and length tolerance +/- 1/8"

NRC RATING

Directly Mounted: 0.45
 With 2" Air Gap: 0.85
 With 6" Air Gap: 0.90

MATERIAL COMPOSITION

100% Solution Dyed Polyester

WEIGHT

0.5 lb / ft²

FIRE RATING

ASTM-E84 — Class A classification
 AS ISO 9705 — 2003 — Group 1 classification
 EN-13501 — B-s2-d0 Classification

TEMPERATURE

The maximum temperature exposure is 240° F (115° C)

LIGHTFASTNESS

AATCC 16.3, Option 3: Panel color change at 40AFU is 4.5

MOISTURE ABSORPTION

Polyester fiber when exposed to an atmosphere of 120°F (49° C) at 90% relative humidity for four days showed moisture absorption of less than 0.03% by weight.

VOC TESTING

In accordance with Standard Method Version 1.2 for CDPH 01350, Zintra Acoustic Panels received a PASS for all testing scenarios.

APPLICATION

Indoor areas only.

FABRICATION

Utility knife and CNC with oscillating knife.

INSTALLATION

Adhere Zintra Acoustic Panel to substrate using contact adhesive or Liquid Nails. Panels can be mechanically fixed using screws, Z-clips, nails, stand-offs or with aluminum trim or millwork.

Visit mdc.is/Zintra to download available Installation Guides for more details.

SUSTAINABILITY

Certified by Declare, GREENGUARD and HPD, Zintra is made from 100% recyclable materials:

- 60% post-consumer recycled content from PET bottles.
- 35% pre-consumer recycled content from PET chips
- 5% polylactic acid (PLA)

Zintra also has low levels of volatile organic compounds, contain no formaldehyde, meets the Global Recycled Standard and is Red List Free.

CARE INSTRUCTIONS

Vacuum to remove dust.

Remove spills immediately. Dab Zintra with a damp clean cloth and mild solution of liquid detergent and warm water. Repeat only using clean water, then pat dry with a lint free cloth.

For difficult stains and to disinfect, bleach can be used in accordance with CDC Cleaning and Disinfection instructions. The solution ratio should be 5 tablespoons of bleach to 1 Gallon (3.7 ltr) of water or 4 teaspoons of bleach per quart (0.95 ltr) of water. Spray apply the solution as a mist and then wipe off the surface moisture. To remove the bleach, repeat using a clean, water dampened cloth, then pat dry.

Polyester carpet and fabric cleaners can be used.

With all cleaning applications - ***always test an inconspicuous area first.***

A stain repellent coating is available for additional protection.

MDC ADVANTAGE

- Top acoustical installers prefer our product and our customer service team.
- 9 years of experience working through challenges to become experts.
- Fabrication capabilities for all design solutions.
- National team of Account Executives to support projects in any location.



HOW TO SPECIFY

Ideal for walls, ceilings, screens, partitions, millwork and more, Zintra is easily fabricated and installed to offer the simplest acoustic solution. While specifying Zintra Textile Acoustic Panels, consider the following:

PANEL SIZE:

- Standard Panel: 4'x9' (nominal (48.25"x110"), true (48"x108")) or custom size

PANEL THICKNESS:

- Standard Panel: 1/2"
- 1" thick panels available by laminating (2) 1/2" sheets together

DESIGN:

- Select Textile Design
- Define if Single or Double sided

COLOR:

- Select Panel color from available color list

QUANTITY:

- Number of panels required or dimensions of space

INSTALLATION & HARDWARE:

- Installation method: direct adhere or hardware for mounting
- Hardware: visit mdc.is/zintra for ad'tl hardware options

Questions? MDC is here to help!

At MDC, we believe the very best design partnerships are created from a shared vision paired with keen expertise. Our goal is to always celebrate and support your unique design perspective, which is why we strive to create products abundant in aesthetic appeal and approachable functionality. Together, let's navigate your next project from the initial inspiration to a finished product. Together, let's make it happen.



For more information visit:
MDC.IS/ZINTRA

MDC INTERIOR SOLUTIONS
400 HIGH GROVE BOULEVARD
GLENDALE HEIGHTS, IL 60139

ZINTRA@MDCWALL.COM
847.437.4000

 | MDCWALL.COM