

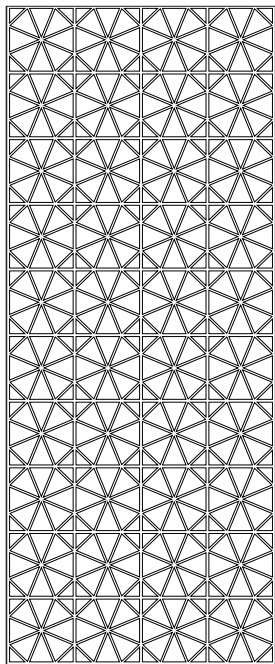
Zintra Embossed Wall Panel

Installation Instructions

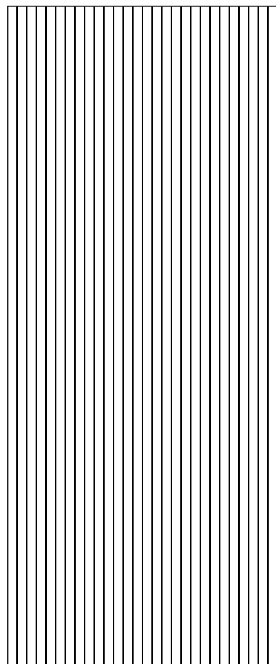
Adhesive Fixed

These are 10 different emboss styles.

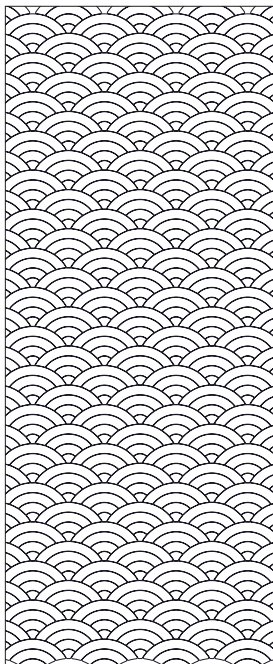
Sample shown for reference



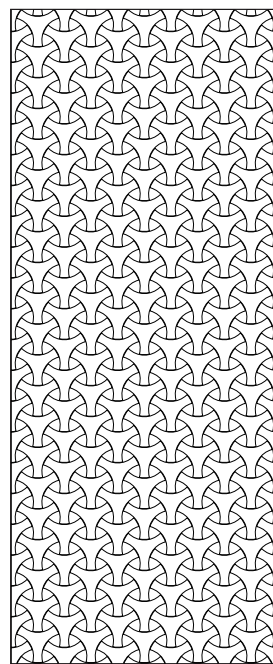
CONSTELLATION



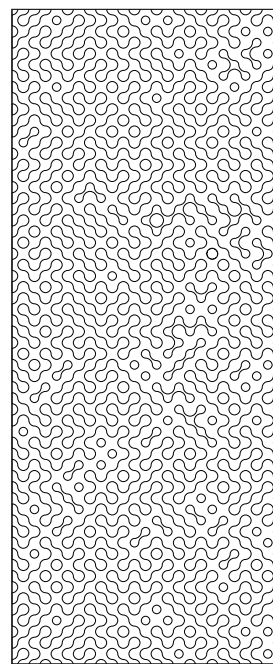
CORDUROY



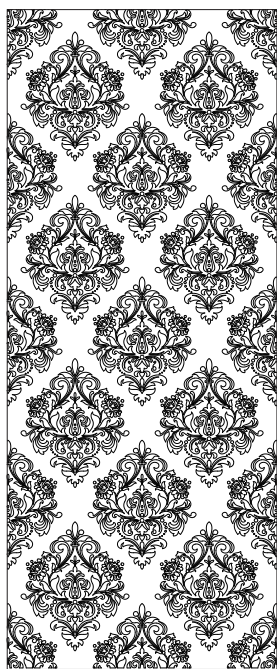
CUMULUS



LINKED



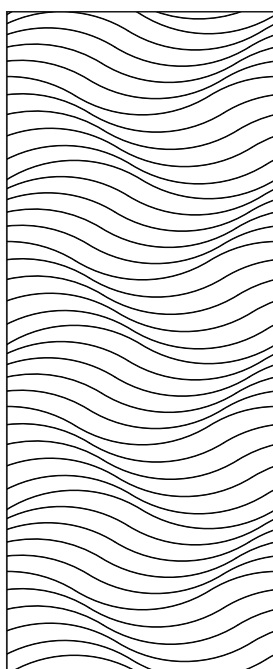
MOLECULAR



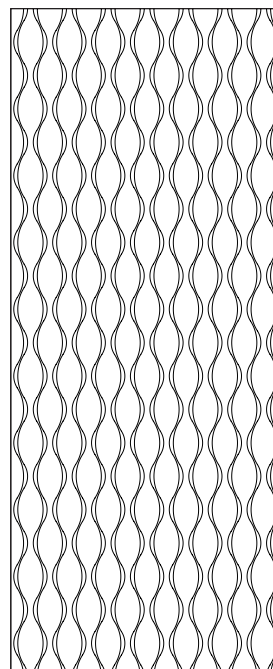
DAMASK



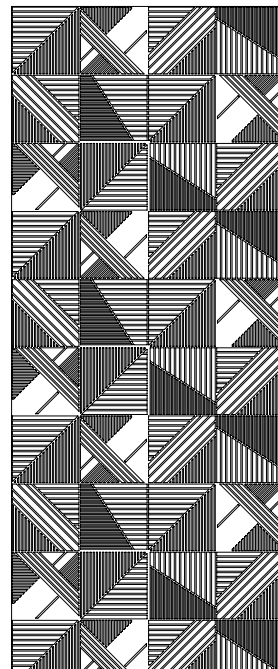
JUNGLE



TIDAL



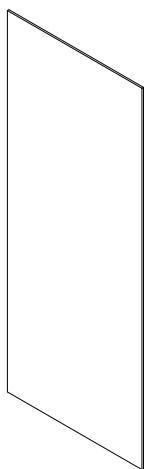
SANDGLASS



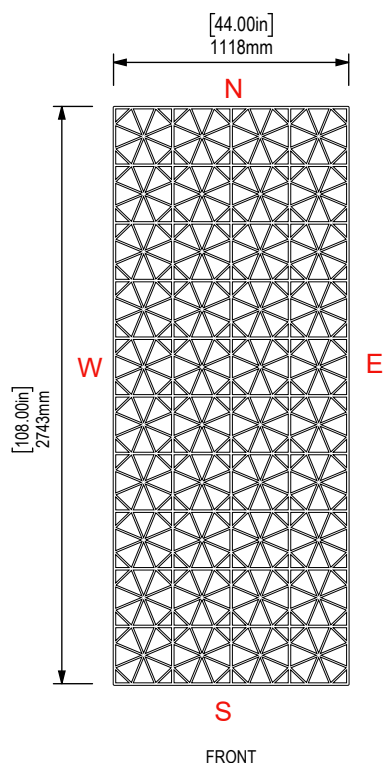
TAPESTRY

PARTS & HARDWARE

PANEL



MEASUREMENTS



Wall Panels	Trimmed Size	Trimmed Pattern match size
Constellation	1117.6mm[44"]x 2743.2mm[108"]	Same as Full Sheet Trim
Corduroy	1117.6mm[44"]x 2743.2mm[108"]	Same as Full Sheet Trim
Cumulus	1117.6mm[44"]x 2743.2mm[108"]	1117.6mm[44"] x 2671.1mm[105.17"]
Damask	1117.6mm[44"]x 2743.2mm[108"]	Same as Full Sheet Trim
Jungle	1117.6mm[44"]x 2743.2mm[108"]	Same as Full Sheet Trim
Linked	1117.6mm[44"]x 2743.2mm[108"]	1117.6mm[44"] x 2691.6mm[105.97"]
Molecular	1117.6mm[44"]x 2743.2mm[108"]	1117.6mm[44"] x 2608mm[102.68"]
Sandglass	1117.6mm[44"]x 2743.2mm[108"]	Same as Full Sheet Trim
Tapestry	1117.6mm[44"]x 2743.2mm[108"]	Same as Full Sheet Trim
Tidal	1117.6mm[44"]x 2743.2mm[108"]	Same as Full Sheet Trim

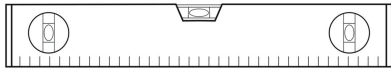
NOTE:

All Trimmed sizes will match **East** and **West**.

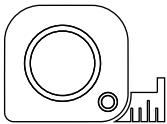
Due to the organic design, some panels have to be trimmed **North** & **South** to match on the top and bottom (see table above).

YOU WILL NEED

SPIRIT LEVEL



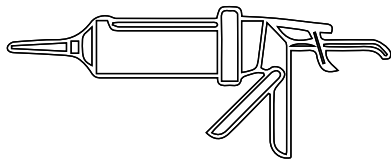
TAPE MEASURE



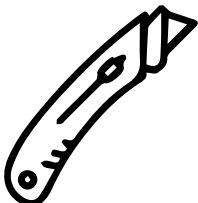
LOCTITE POWER GRAB HEAVY DUTY CONSTRUCTION ADHESIVE OR PATTEX PL200



APPROPRIATE APPLICATOR



STANLEY KNIFE



Zintra Embossed Wall Panel

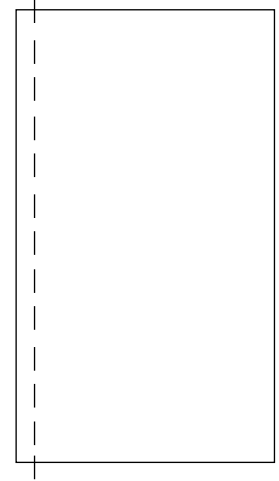
Installation Instructions

Adhesive Fixed

STEP 1

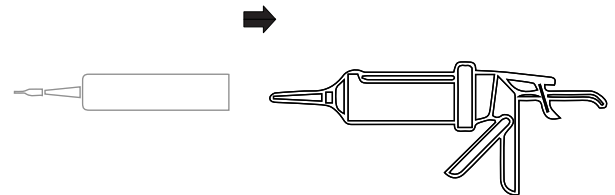
Be certain that your substrate will hold an adequate bond to the recommended adhesive(s). If in doubt about a coating or a finish already in place, an adhesion mock up test is recommended before you begin.

Cut, scribe and dry pre-fit all Zintra panels as necessary.



STEP 2

Place the cartridge into the caulking gun, cut the nozzle to produce a 1/4" thick bead and puncture the inner seal. A 1/4" (0.64cm) bead will cover approximately 27 lineal feet (8.2 meters) per 9 fl oz tube.

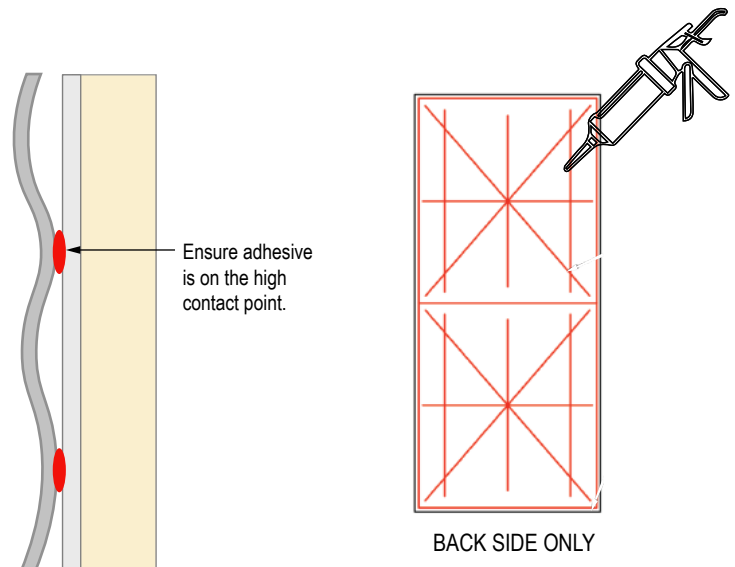


STEP 3

Once all of the panels have been properly sized and trimmed, begin applying the adhesive to the **BACK SIDE (ONLY)** of each panel. Use only Loctite Powergrab Heavy Duty Construction Adhesive or Pattex PL200 and follow suppliers instructions.

First apply a bead around the entire perimeter of the **BACK** of the panel. Place the bead to be no more than 1" in from the perimeter at any point.

Next, apply a zig zag or diagonal pattern of additional adhesive across the central sections of the panel, within the perimeter bead. See the images on the right for guidance.



Zintra Embossed Wall Panel

Installation Instructions

Adhesive Fixed

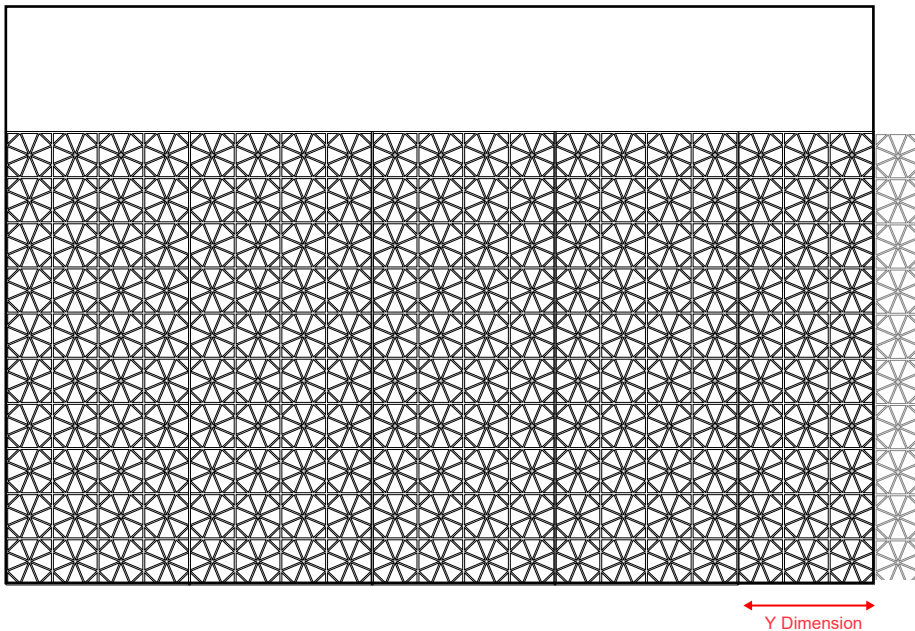
STEP 4

Apply the panel to the substrate within 20 minutes and monitor your adhesive to prevent it from skinning over. Set the panels into place and smooth with open palms.

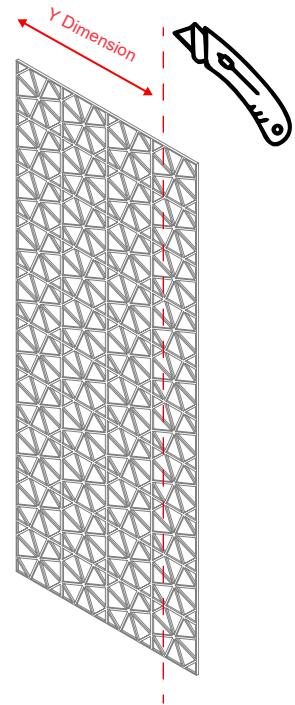
Now, remove the panel from the substrate and hold it off the surface for one minute. Then reset the panel into place and smooth with firm pressure to set it. Use mechanical fasteners if you see the need to help this stay positioned while the adhesive remains wet.

Never use solvent based contact adhesives or any unauthorized adhesives.

Do not reverse or flip panels.



1



2

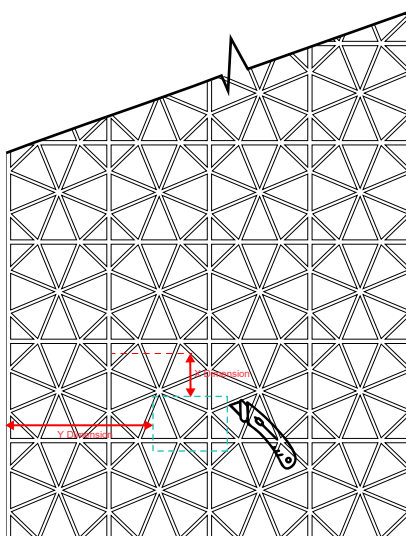
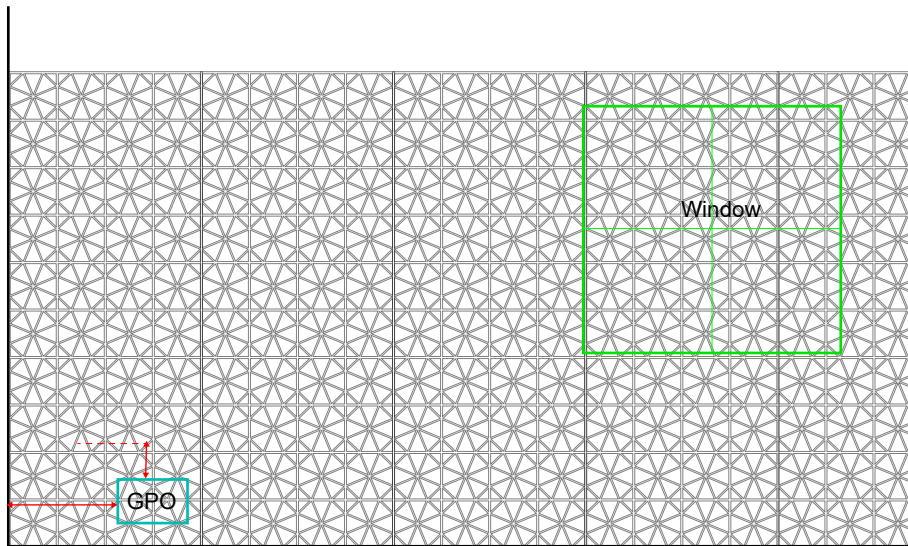
Zintra Embossed Wall Panel

Installation Instructions

Adhesive Fixed

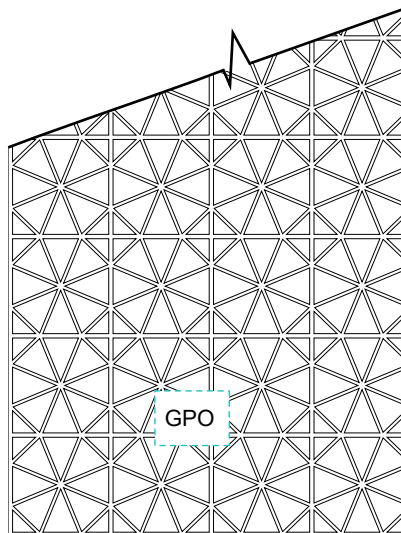
STEP 5

If you have wall GPO's, windows and doors in the way of your panels. Ensure you do not install the panels until you have measured the protruding objects.



Cut with Knife

1



Cut with Knife

2

Note:

Dry fit after cutting, to ensure panels fits.

Continuously go over cutline to create clean and tidy cut.