

# Zintra Acoustic Sculpted 1/2" Sheets

## Installation Instructions

### Direct Adhesion

Be certain that your substrate will hold an adequate bond to the recommended adhesive. If in doubt about a coating or a finish already in place, an adhesion mock up test is recommended before you begin.

Cut, scribe and dry pre-fit all Zintra panels as necessary. With a straight edge as a guide, use a razor blade or utility knife to make a series of small repetitive cuts. Do not attempt to cut through the sheet in a single pass.

Once all of the panels have been properly sized and trimmed, begin the application of the adhesive to the **BACK SIDE (ONLY)** of each panel. Use only Liquid Nails N710 or N2000 adhesive tubes.

Place the cartridge into the caulking gun, cut the nozzle to produce a 1/4" thick bead and puncture the inner seal. A 1/4" bead will cover approximately three 4' x 9' sheets per 9 fl oz tube.

First apply a bead around the entire perimeter of the **BACK** of the panel. Place the bead to be no more than 1" in from the perimeter at any point.

Next, apply a zig zag or diagonal pattern of additional adhesive across the central sections of the panel, within the perimeter bead. See the images on the next page for guidance.

Apply the panel to the substrate within 20 minutes and monitor your adhesive to prevent it from skinning over. Set the panels into place and smooth with open palms.

# Zintra Acoustic Sculpted 1/2" Sheets

## Installation Instructions

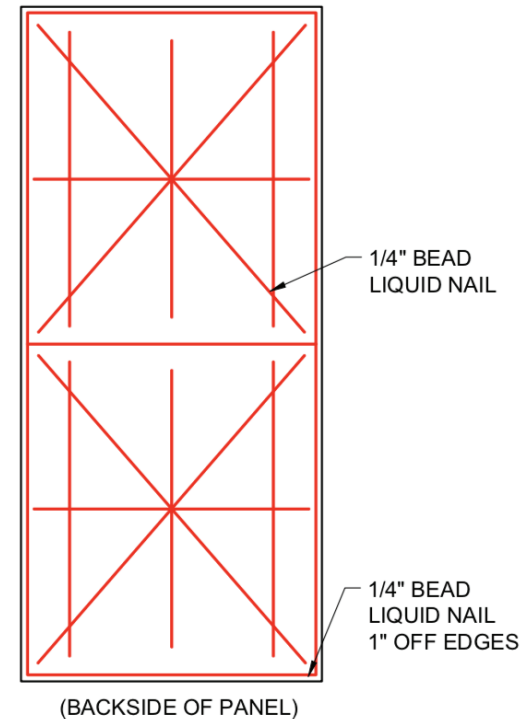
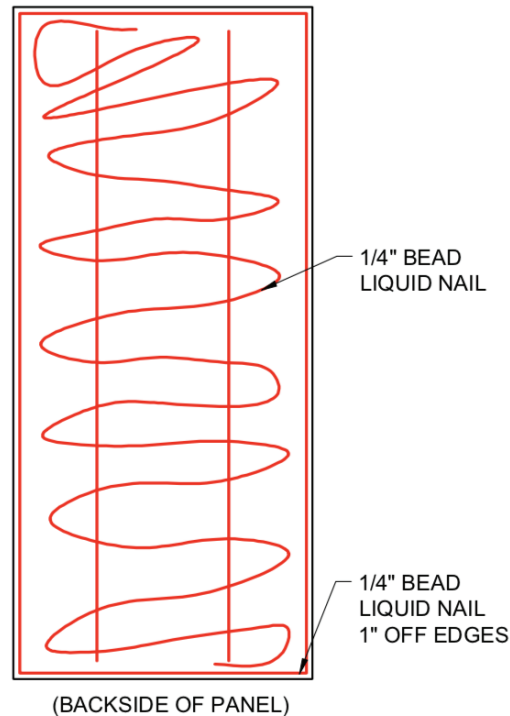
Now, remove the panel from the substrate and hold it off the surface for one minute. Then reset the panel into place and smooth with firm pressure to set it. Use mechanical fasteners if you see the need to help this stay positioned while the adhesive remains wet.

Never use solvent based contact adhesives or any unauthorized adhesives.

Install all panels by maintaining the identical orientation of the sticker (and thus of the panel) for each and every panel installed. Do not reverse or flip panels.

### Adhesive

### Method of application



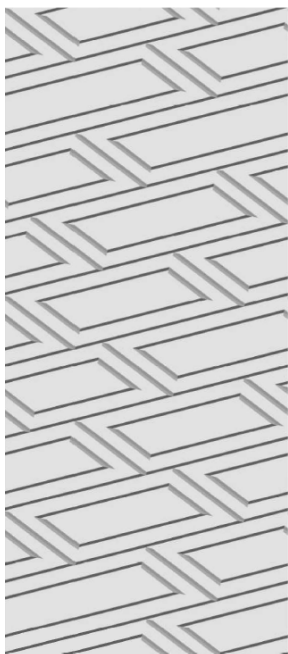
# Zintra Acoustic Sculpted 1/2" Sheets

## Installation Instructions

**Pattern Schematics 47 1/2" wide x 108" high sheets**

**Note: Pattern matches should be taken into consideration when installing**

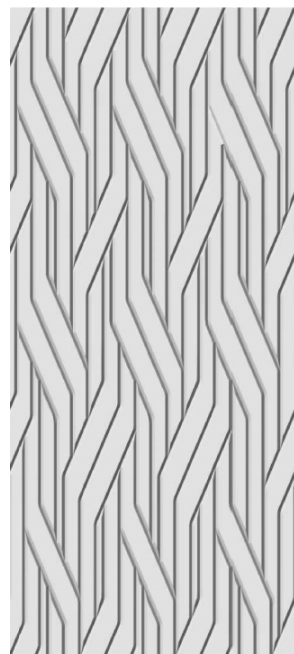
**Cubic**



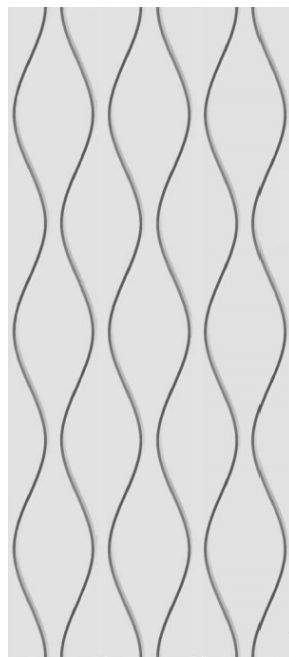
**Cosmic**



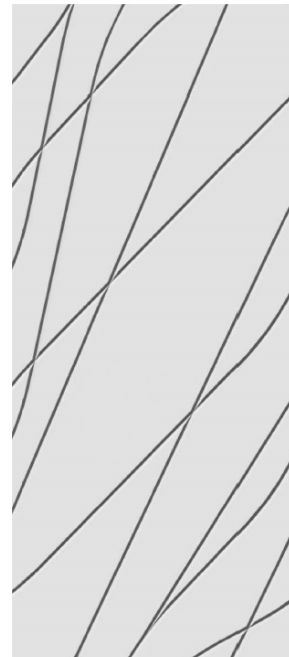
**Heli**



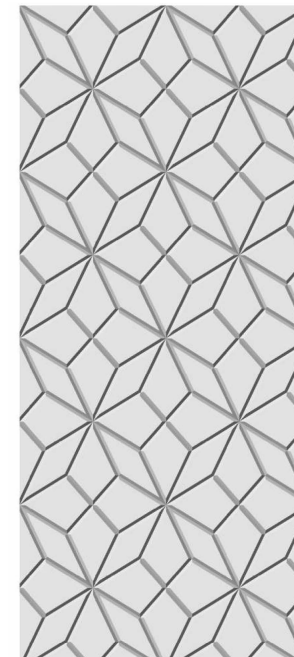
**Hourglass**



**Scribe**



**Starburst**



**Stencil**

