

MDC ACOUSTIC SOLUTIONS

FEATURING **zintra**®

847-437-4000 | mdc.is/zintra



Zintra 1" Acoustic Panels Linen and Ivory

1" ACOUSTIC PANELS

Technical Specifications

AUGUST 2024



Zintra 1" Acoustic Panels Hexagon Shapes with ceiling suspension in Frost, displayed in custom 1/2" shape Orange and Sunshine panels
PROJECT Charles Darwin University | DESIGNER Asbuild | PHOTOGRAPHER Asbuild

Zintra 1" Acoustic Panels boast exceptional sound absorption capabilities for walls, ceilings, and screens. Choose from a palette of 6 solid colors to elevate productivity in work environments, enrich guest experiences in hospitality settings, and enhance comfort in institutional spaces.

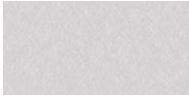
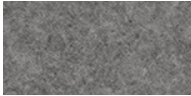


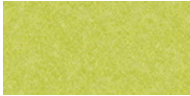

MDC ACOUSTIC SOLUTIONS
FEATURING **zintra**



Zintra 1" Acoustic Panels custom cut shapes in Tar, Slate and Grass



Zintra 1" Acoustic Panels Pewter

STANDARD COLORS						
						
	Frost	Pewter	Slate	Ecru	Grass	Pebble



Zintra 1" Acoustic Panels color range

DIMENSIONS

Nominal 4' x 9' x 1" (exact size 48.25" x 110" x 1")
 Thickness tolerance +/- .02"
 Width and length tolerance +/- 1/8"

MATERIAL COMPOSITION

100% Solution Dyed Polyester

WEIGHT

0.75 lb / ft²

FIRE RATING

ASTM-E84 — Class A classification
 AS ISO 9705 — 2003 — Group 1 classification
 EN-13501 — B-s2-d0 Classification

TEMPERATURE

The maximum temperature exposure is 240° F (115° C)

LIGHTFASTNESS

AATCC 16.3, Option 3: Panel color change at 40AFU is 4.5

MOISTURE ABSORPTION

Polyester fiber when exposed to an atmosphere of 120°F (49° C) at 90% relative humidity for four days showed moisture absorption of less than 0.03% by weight.

VOC TESTING

In accordance with Standard Method Version 1.2 for CDPH 01350, Zintra Acoustic Panels received a PASS for all testing scenarios.

APPLICATION

Indoor areas only.

SURFACE FINISH

Zintra Acoustic Panels have a matte surface on both side "A" and side "B" and are suitable to use as the face surface. When installing panels side-by-side, it is recommended that the face surfaces are installed as either all "A" or all "B" to ensure consistency of finished look.

FABRICATION

Utility knife and CNC with oscillating knife.

INSTALLATION

Adhere Zintra Acoustic Panel to substrate using contact adhesive or Liquid Nails. Panels can be mechanically fixed using screws, Z-clips, nails, stand-offs or with aluminum trim or millwork.

Visit mdc.is/Zintra to download available Installation Guides for more details.

SUSTAINABILITY

Certified by Declare, GREENGUARD and HPD, Zintra is made from 100% recyclable materials:

- 60% post-consumer recycled content from PET bottles.
- 35% pre-consumer recycled content from PET chips
- 5% polylactic acid (PLA)

Zintra also has low levels of volatile organic compounds, contain no formaldehyde, meets the Global Recycled Standard and is Red List Free.

CARE INSTRUCTIONS

Vacuum to remove dust.

Remove spills immediately. Dab Zintra with a damp clean cloth and mild solution of liquid detergent and warm water. Repeat only using clean water, then pat dry with a lint free cloth.

For difficult stains and to disinfect, bleach can be used in accordance with CDC Cleaning and Disinfection instructions. The solution ratio should be 5 tablespoons of bleach to 1 Gallon (3.7 ltr) of water or 4 teaspoons of bleach per quart (0.95 ltr) of water. Spray apply the solution as a mist and then wipe off the surface moisture. To remove the bleach, repeat using a clean, water dampened cloth, then pat dry.

Polyester carpet and fabric cleaners can be used.

With all cleaning applications - ***always test an inconspicuous area first.***

A stain repellent coating is available for additional protection.

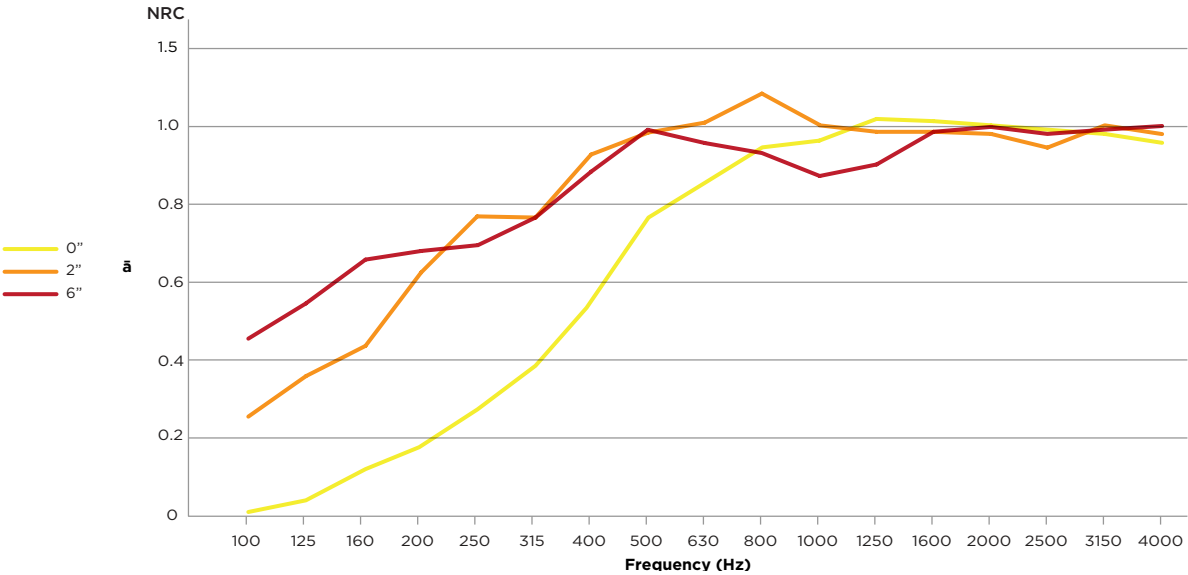
MDC ADVANTAGE

- Top acoustical installers prefer our product and our customer service team.
- 9 years of experience working through challenges to become experts.
- Fabrication capabilities for all design solutions.
- National team of Account Executives to support projects in any location.

ACOUSTIC RATING

Zintra products have been tested according to ASTM C423-09a and received ratings ranging from .75 – 1.0 NRC depending on distance from wall.

Frequency/Hz		100	125	160	200	250	315	400	500	630	800	1000	1250	1600	2000	2500	3150	4000	$\bar{\alpha}$	NRC
DISTANCE FROM WALL	0"	0.01	0.04	0.13	0.19	0.28	0.39	0.52	0.78	0.85	0.94	0.96	1.04	1.03	1.01	0.98	0.96	0.97	0.60	0.75
	2"	0.25	0.36	0.42	0.61	0.77	0.77	0.92	0.98	1.04	1.09	1.00	0.97	0.96	0.93	1.00	0.99	0.92	0.95	0.95
	6"	0.45	0.55	0.64	0.66	0.96	0.77	0.88	0.99	0.90	0.92	0.86	0.90	0.97	1.00	0.97	0.99	1.00	0.90	0.90



HOW TO SPECIFY

Ideal for walls, ceilings, screens, partitions, millwork and more, Zintra is easily fabricated and installed to offer the simplest acoustic solution. While specifying Zintra Acoustic Panels for your space, consider the following:

PANEL SIZE:

- Standard Panel: 4'x9' (nominal (48.25"x110"), true (48"x108") or custom size)

PANEL THICKNESS:

- 1" thick Zintra Acoustic Panels available in 6 standard color options
- Ad'tl thicknesses available by laminating (2) 1/2" panels together: 1", 1.5", 2"

COLOR:

- Select Panel color from available color list
- Timber / Premium Wood / Premium Material - define if single or double sided

QUANTITY:

- Number of panels required or dimensions of space

INSTALLATION & HARDWARE:

- Installation method: direct adhere or hardware for mounting
- Hardware: visit mdc.is/zintra for ad'tl hardware options

Questions? MDC is here to help!

At MDC, we believe the very best design partnerships are created from a shared vision paired with keen expertise. Our goal is to always celebrate and support your unique design perspective, which is why we strive to create products abundant in aesthetic appeal and approachable functionality. Together, let's navigate your next project from the initial inspiration to a finished product. Together, let's make it happen.

For more information visit:

MDC.IS/ZINTRA

MDC INTERIOR SOLUTIONS
400 HIGH GROVE BOULEVARD
GLENDALE HEIGHTS, IL 60139

ZINTRA@MDCWALL.COM
847.437.4000

Instagram | LinkedIn | Facebook | Pinterest | X | YouTube | [MDCWALL.COM](https://mdcwall.com)