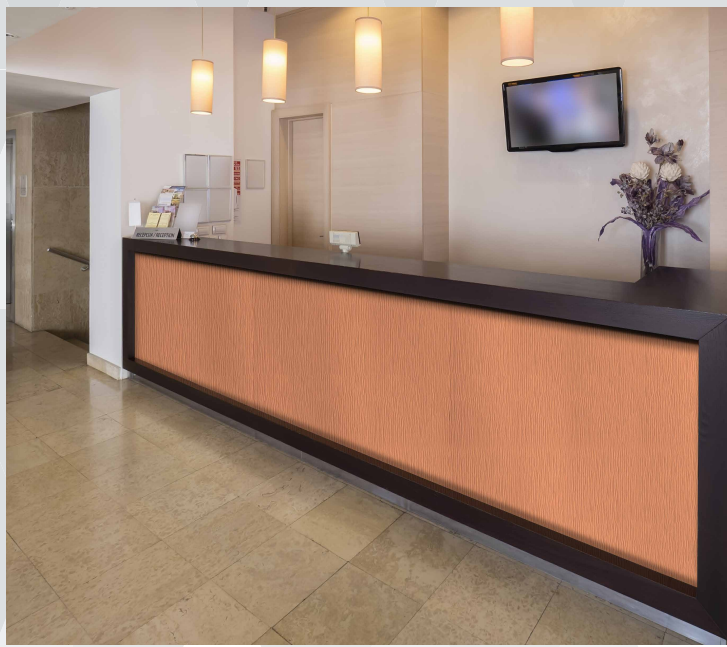




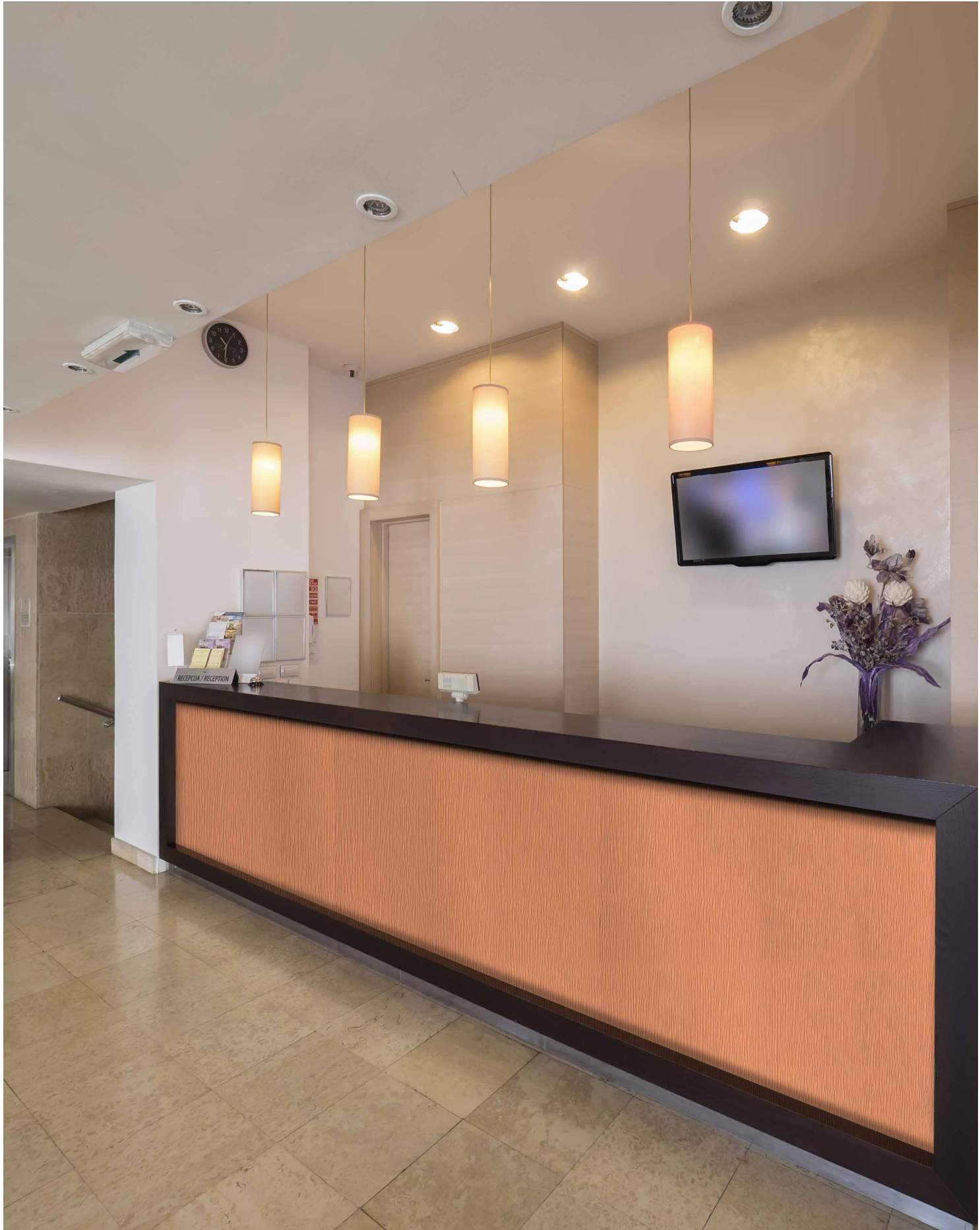
# ARCHITECTURAL METALS

SECTION: 097800



**MDC**  
INTERIOR SOLUTIONS





# Architectural Metals

## High Pressure Laminates with a Real Metal Surface

A collection of High Pressure Laminates with a real metal surface and phenolic paper backing. MDC Architectural Metals are 4' x 8' sheets in Aluminum or Copper; featuring embossing, hand painting, etching, and other innovative techniques to enhance the look of metals. High quality design solutions are its trademark.

MDC Architectural Metals are created for commercial spaces where durability of design reigns supreme. As experts in surfaces that remain abrasion resistant, in addition to performance, MDC Architectural Metals meet safety and material standards. Ideal for hospitality, healthcare, retail, institutional, and commercial design interiors.

**PREMIUM DURABILITY**  
Architectural Metals are engineered to withstand scuffs, cuts, chemical exposures, and collision impact without showing visible signs of wear and tear.

**REAL METAL SURFACES**  
Constructed from Aluminum and Copper Surfaces

**DISTINCTLY UNIQUE**  
Features Embossed, Etched and Hand Painted treatments to enhance real metal surfaces





# Design Beyond the Surface

## Solving Your Design Needs

**1. HPLs (High Pressure Laminates) with Real Metal Surfaces**  
Available in real aluminum and copper surfaces with a phenolic paper backing. Like other HPLs, counterbalancing is required to prevent warping of the substrate.

**2. High Quality, Handmade Designs**  
MDC Architectural Metals offers design flexibility and is available as flat sheets or with a combination of embossed designs and a finish.

**3. Suitable for a Variety of Applications**  
Architectural Metals are suitable for a variety of vertical applications including wall panels, accent walls, reception desks, store fixtures, point-of-purchase (POP) displays, and more.

**4. Protective Coating for Durable Surfaces**  
Most products are coated with a lacquer to ensure durability and abrasion resistance. Polished finishes are anodized and will not tarnish. All Architectural Metals are also covered with a clear peel off masking to protect the finish. This masking should be left on during fabrication to avoid damaging the surface.

**5. Eco-Friendly Options Available**  
MDC Architectural Metals made from pre-consumer materials that are phenol-free and CO2 neutral. The core is made of 100% biological secondary components obtained from renewable resources and is fully recyclable.

**6. Low Minimum Order Quantities**  
Whether you need one sheet for a finishing touch or 100 for your project, we've got you covered. Stocked items are ready to ship within 1-2 weeks.

**7. Shipped to You from an ISO Certified Facility**  
Manufacturing facility is ISO Certified which enables us to have the "hands on" control necessary to maintain the high standards customers expect from us. Metal sheets will be thoroughly inspected by our Quality Control Team before we ship your order.

### Features

Real Metal Surfaces 

Embossing, Etching, and Hand Painting Techniques 

Suitable for a Variety of Applications 

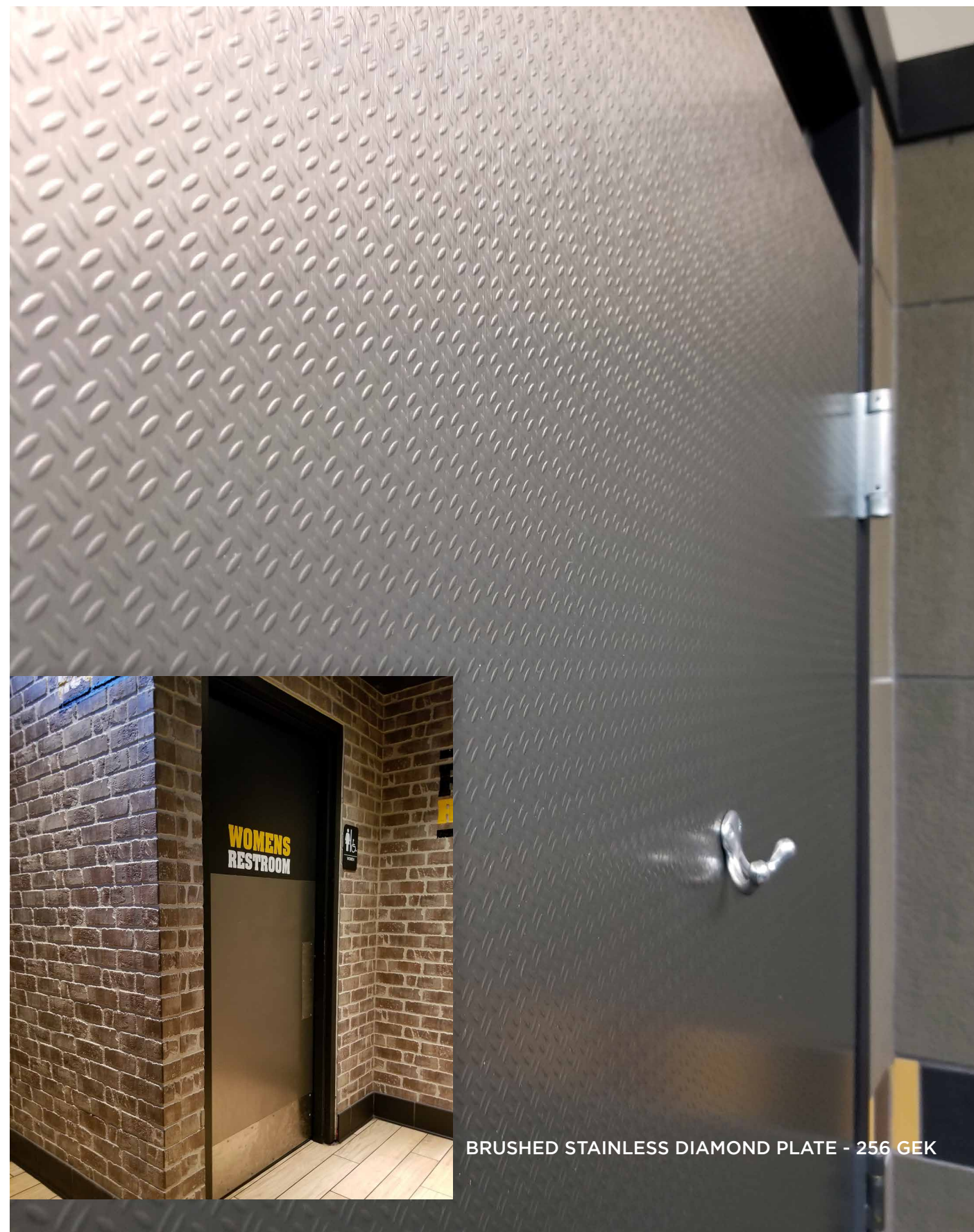
Counterbalancing Required for HPLs 

Abrasion Resistant 

Easy to Clean Surface 

Class A Fire Rated 

Protective Coat Added to Most Products 



BRUSHED STAINLESS DIAMOND PLATE - 256 GEK





# ARCHITECTURAL METALS

Aluminum  
Copper  
Hand Painted  
Special Order

BRUSHED ALUMINUM - 245



# Architectural Metals

## Choose from a Variety of Real Metal Surfaces

With dozens of options to choose from, MDC Architectural Metals are the perfect high-end solution for your application that can be used as wall panels, accent walls, reception desks, point-of-purchase (POP) displays, store fixtures, and more. We can help you find which one is best for your project!

### Aluminum Collection

All Aluminum finishes are available in flat sheets or with embossed designs added. Most finishes are lacquered for abrasion resistance. The polished finishes are anodized.



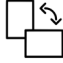





### Copper Collection

Copper laminates, with selected popular embossed designs, are lacquered and come with clear protective film for ease in processing.

### Hand Painted Collection

As their name implies, the Unique Art Collection is truly a unique work-of-art that offers rich colors and materials in their design. They are hand painted by artists using techniques that allow for repeatability. The artistic value and nuances of hand painting are evident when using multiple sheets. As a result, it should be noted that slight differences will be seen from sheet to sheet. Protected with a high-quality lacquer process to ensure durability, these laminates can be used in both low- and high-traffic areas.

### Features

- Real Metal Surfaces 
- Embossing, Etching, and Hand Painting Techniques 
- Suitable for a Variety of Applications 
- Counterbalancing Required for HPLs 
- Abrasion Resistant 
- Easy to Clean Surface 
- Class A Fire Rated 
- Protective Coat Added to Most Products 



ANTIQUPE PEWTER REEDS - 490



# Aluminum

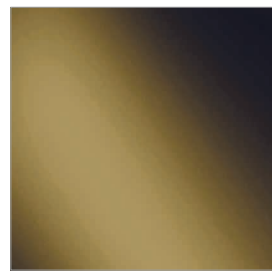
All Aluminum finishes are available in flat sheets or with embossed designs added to the finish. Most finishes are lacquered for abrasion resistance. The polished finishes are anodized and will not tarnish.



Polished Aluminum  
904



Polished Smoke  
1014



Polished Brass  
914



Rose Gold  
212



Brushed Aluminum  
245



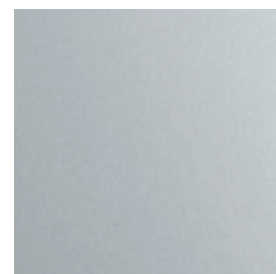
Brushed Stainless  
256G



Brushed Bronze  
944



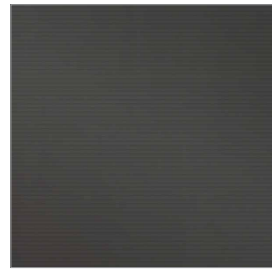
Brushed Brass  
934



Matte Aluminum  
241



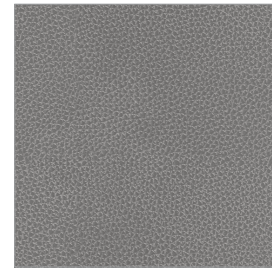
Aluminum Gun Metal  
248



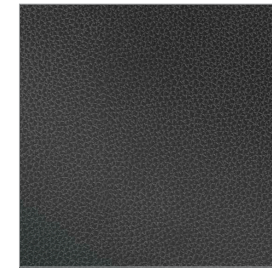
Gun Metal Mill  
603/248



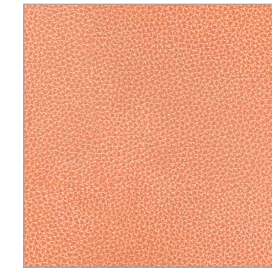
Brushed Aluminum  
Fine Hammered  
924 HAM



Neptune Brushed  
Aluminum  
924 NEP



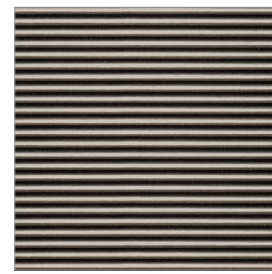
Neptune Polished  
Smoke  
1014 NEP



Neptune Rose Gold  
212 NEP



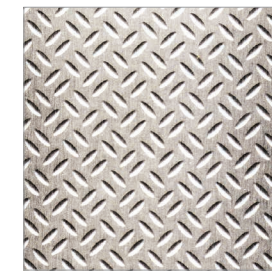
Corrugated Brushed  
Aluminum  
603/924



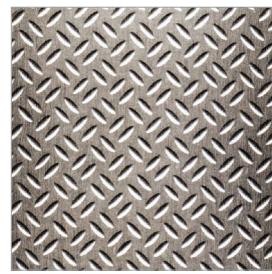
Corrugated Brushed  
Stainless Steel  
603/256



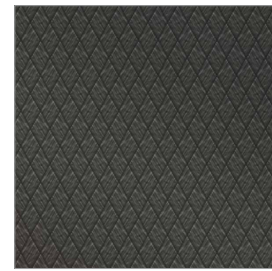
Matte Rose Gold  
242



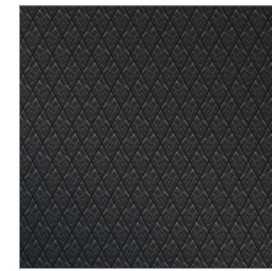
Brushed Aluminum  
Diamond Plate  
924 GEK



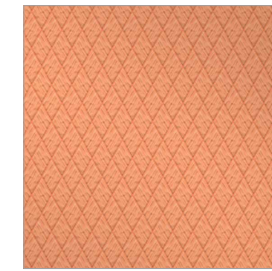
Brushed Stainless  
Diamond Plate  
256 GEK



Diamond Mill  
Gun Metal  
248 DIA



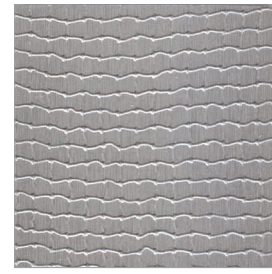
Diamond Polished  
Smoke  
1014 DIA



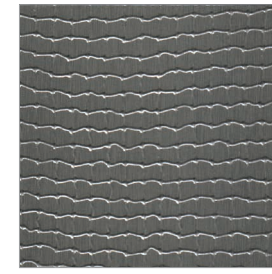
Diamond Rose Gold  
212 DIA



Titan Aluminum  
Gun Metal  
248 BKE



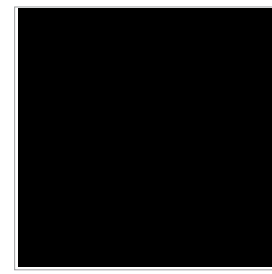
Brushed Aluminum  
Mesh  
924 NTZ



Brushed Stainless  
Mesh  
256 NTZ



Brushed Black Mesh  
234 NTZ



Brushed Black  
234



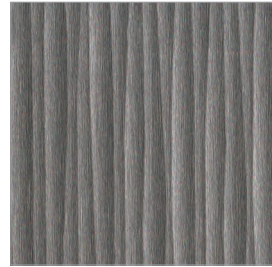
# Aluminum



Brushed Aluminum  
Ridges  
924 PGQ



Brushed Stainless  
Ridges  
256 PGQ



Brushed Stainless  
Reeds  
256 PTK



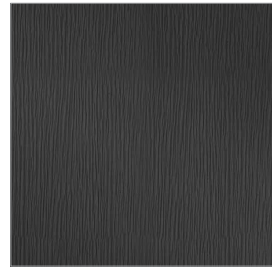
Aluminum Rondo  
202 RON



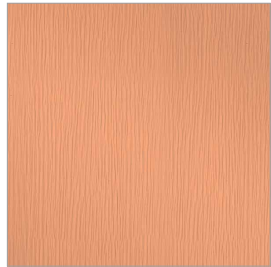
Aqua Polished Smoke  
1014 AQA



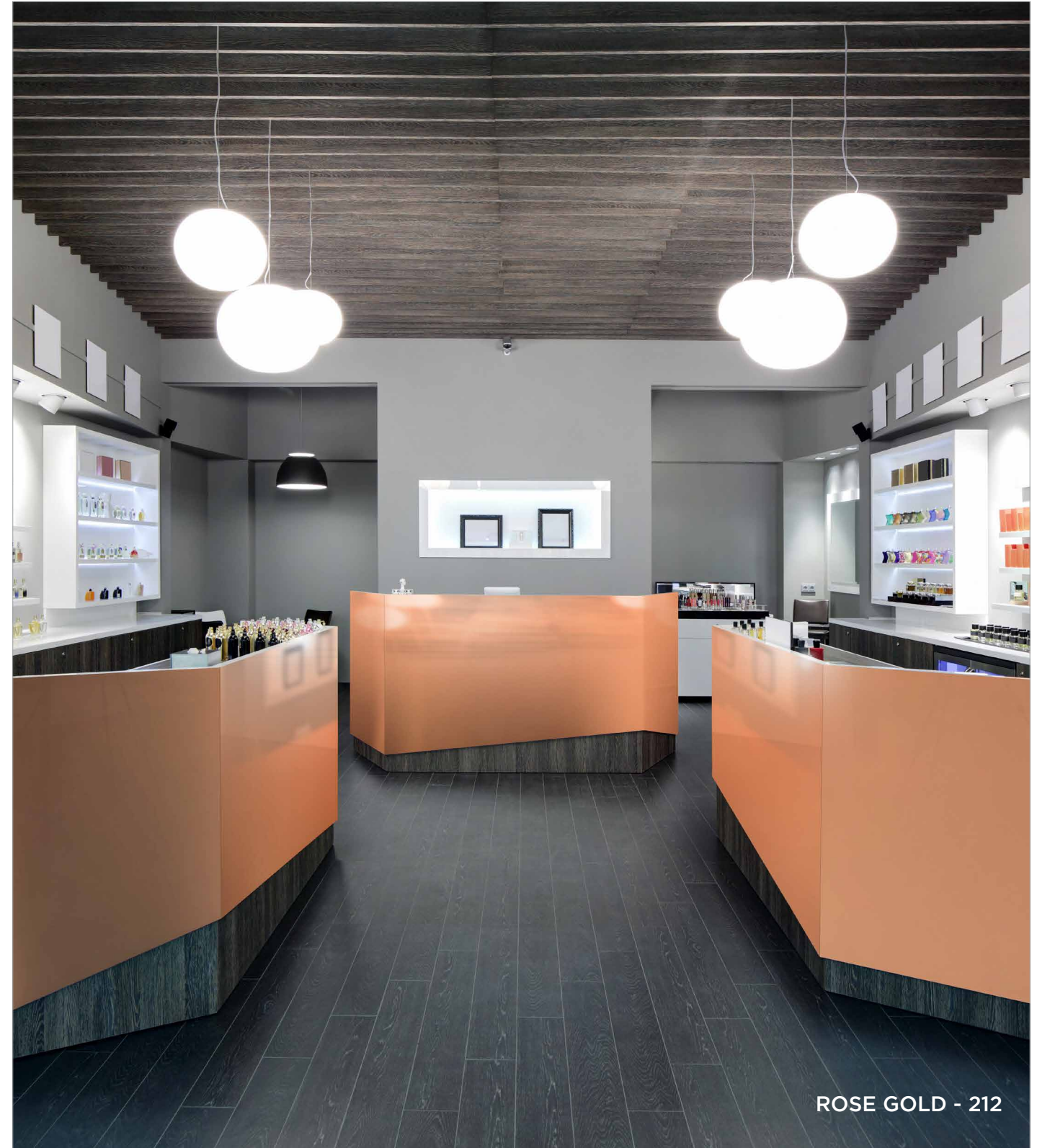
Aqua Rose Gold  
212 AQA



Waterfall Aluminum  
Gun Metal  
248 HM5



Waterfall Rose Gold  
212 HM5



ROSE GOLD - 212



# Copper & Hand Painted

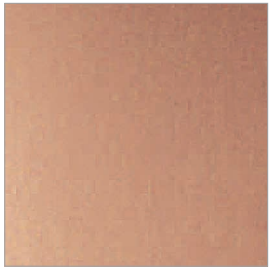


Copper laminates, with selected popular embossed designs, are lacquered and come with clear protective film for ease in processing. Available as flat sheets or with embossed designs.

The Hand Painted Collection offers rich colors, hand painting techniques, and materials in their design. As a result, slight differences will be seen from sheet to sheet. Protected with a high-quality lacquer to ensure durability.



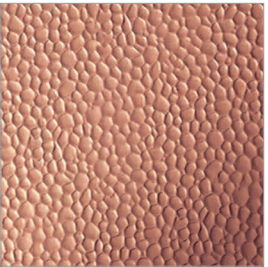
ANTIQUE COPPER ORE - C431



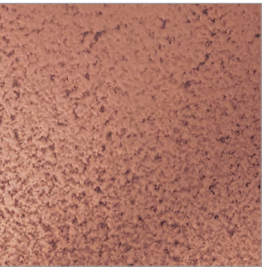
Matte Copper  
C400



Fine Hammered  
Copper  
C471



Hammered Copper  
C473



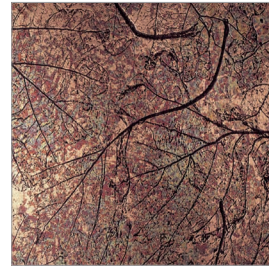
Antique Fine  
Hammered Copper  
C462



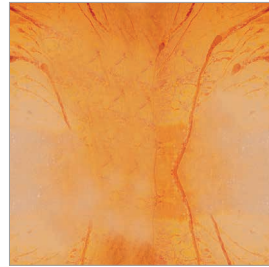
Antique Copper  
Ore  
C431



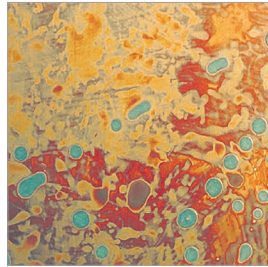
PATINA AUTUMN LEAVES - C421



Patina Autumn  
Leaves  
C421



Patina Onyx  
C412



Patina Malchite  
C414



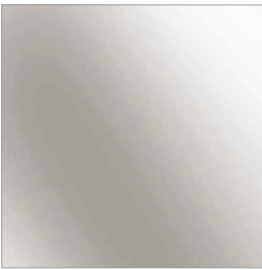
Madrid  
CA5



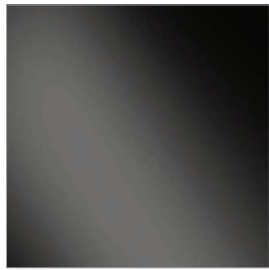
# Special Order Items

Many other design and finish combinations are available for special order. Special orders require a 15 sheet minimum. Want to choose your own Formula? Create your own MDC Architectural Metal in just 3 easy steps.

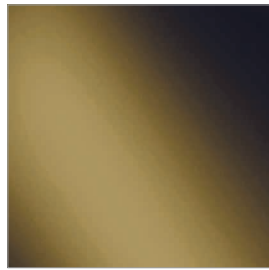
## 1 Step 1: Choose a finish.



Polished Aluminum  
904



Polished Smoke  
1014



Polished Brass  
914



Rose Gold  
212



Brushed Aluminum  
245



Brushed Stainless  
256G



Brushed Bronze  
944



Brushed Brass  
934

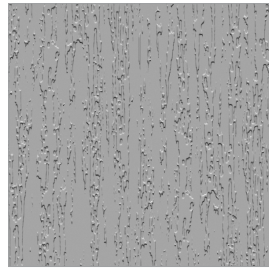


Aluminum Mill  
204

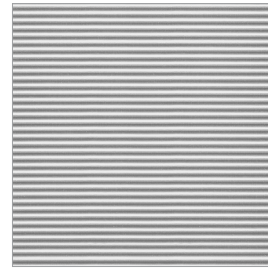


Aluminum Gun Metal  
248

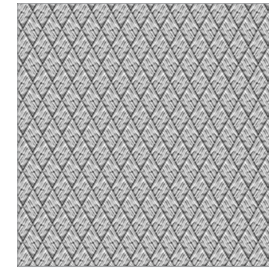
## 2 Step 2: Choose an embossed design.



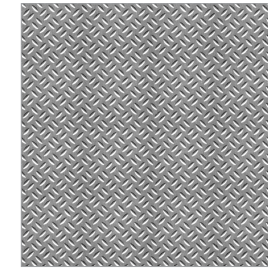
Aqua<sup>1</sup>  
AQA



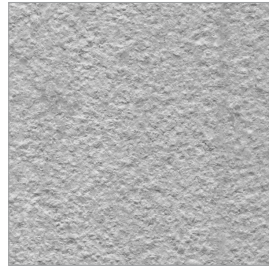
Corrugated  
603



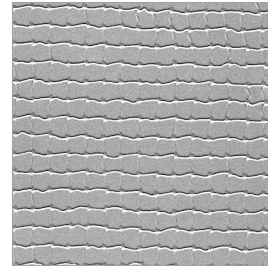
Diamond  
DIA



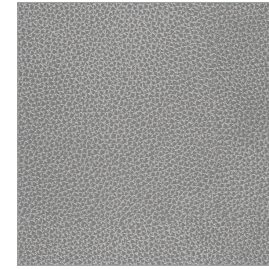
Diamond Plate  
GEK



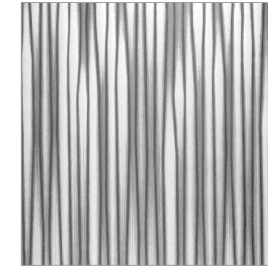
Fine Hammered  
HAM



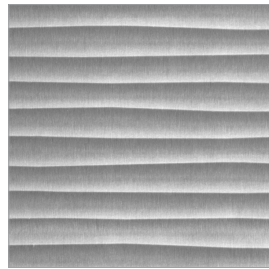
Mesh  
NTZ



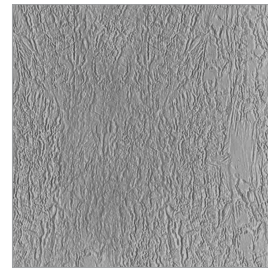
Neptune  
NEP



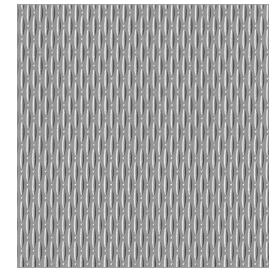
Reeds  
PTK



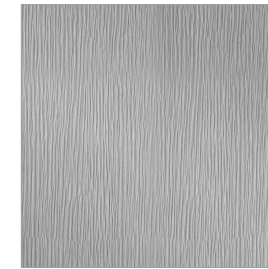
Ridges  
PGQ



Titan<sup>2</sup>  
BKE



Waffle  
WAF



Waterfall  
HM5

1 Aqua is only available in Polished finishes

2 Titan is only available in Brushed and Mill finishes

## 3 Step 3: Contact an MDC Customer Care Representative to place your order. Be sure to inquire about additional finishes and designs that may be available for special order.



847.437.4000 • [info@mdcwall.com](mailto:info@mdcwall.com)





# ART METALS COLLECTION

---

Modern Designs  
Colorful Patinas  
Rich Oxidized Coppers  
Easy to Install  
Unbacked Metals

---



# Art Metals

## Modern Designs Available on Unbacked Specialty Metals

Art Metals are 15 unique metal and patina-inspired wall panel designs ranging from bright colorful patinas and rich oxidized coppers, to rare and artistic, modern-treated metals.

The Art Metals Collection is available on a variety of MDC's 4' x 8' unbacked metal substrates. Our unbacked metal substrates are easy-to-install with no counterbalancing required and offer a wide range of textured options.

With the Art Metals Collection, you can create a unique decorative surfacing solution for your application that can be used as wall art, decorative wall protection, large-scale murals, wall dividers, and more.

### Unbacked Metal Substrates


- Mill Satin (Smooth, "Raw" Aluminum, 4' x 8' Sheets)
- Pebble Aluminum (Uniquely Textured, 4' x 8' Sheets)

### Features

15 Unique Metal Designs 

Custom Capabilities 

Easy to Install, Unbacked Specialty Metals 

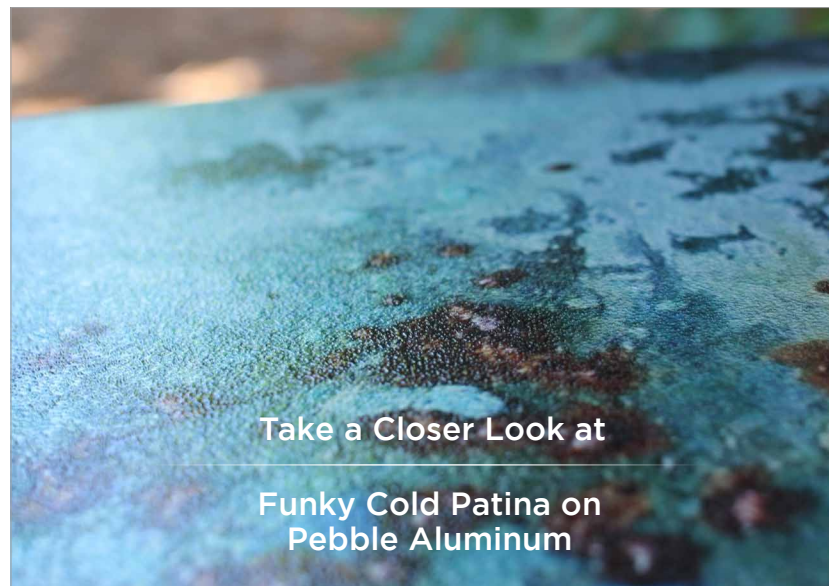
Can be Bent for Some Curved Applications 

Abrasion + Impact Resistant Options Available 

Chemical Resistant 

Stain Resistant 

ArmorCoat™ Added to Some Fusion Substrates 

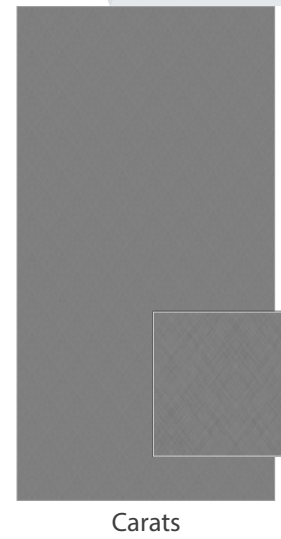
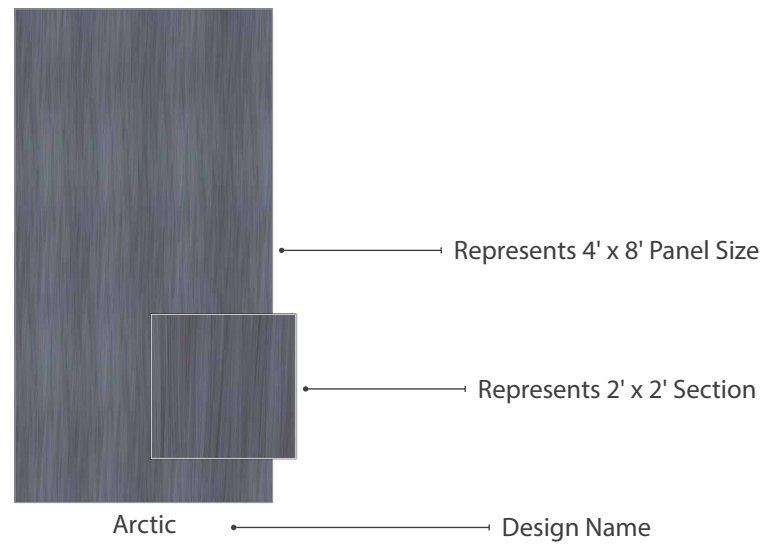




# Art Metals

## Be Inspired: 15 Unique Metal and Patina-Inspired Designs

Combine these Art Metal designs with 4' x 8' unbacked metals to create a custom look for your space.



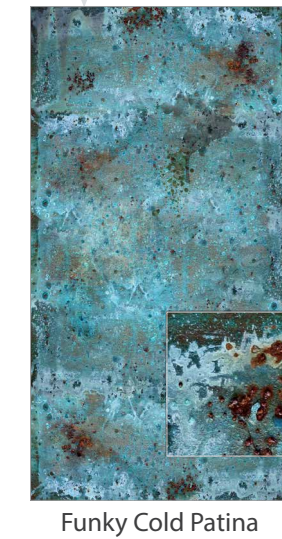
Carats



Castle Black



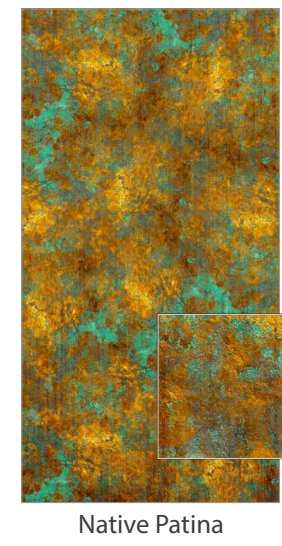
Cu Later



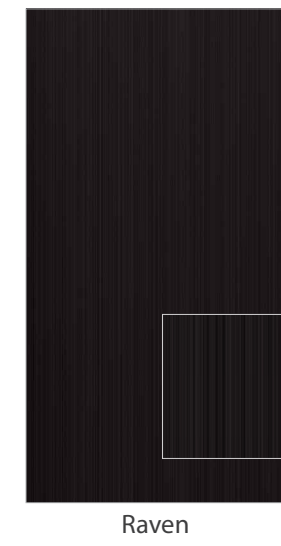
Funky Cold Patina



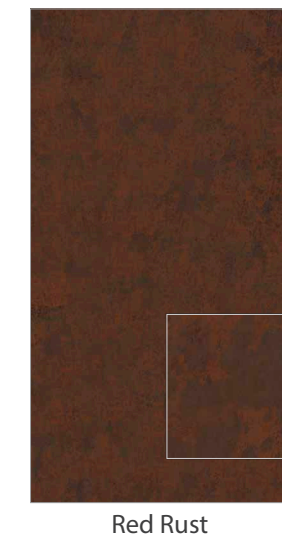
Gatsby



Native Patina



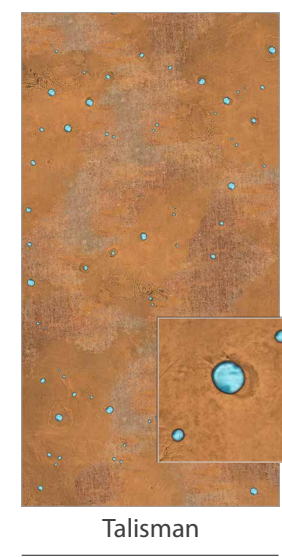
Raven



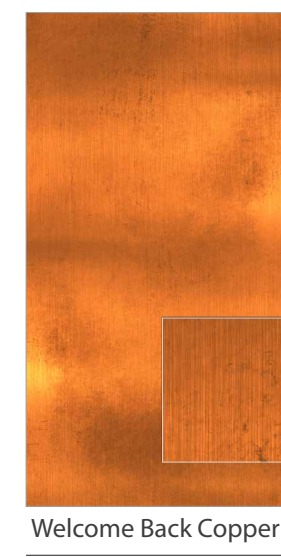
Red Rust



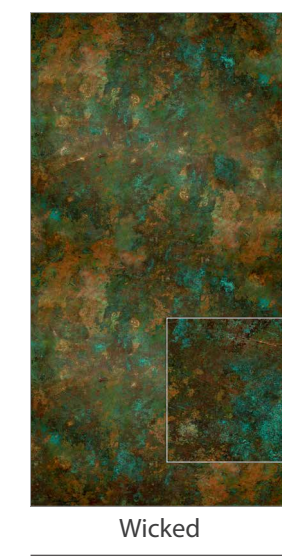
So Impressed



Talisman



Welcome Back Copper



Wicked



# Frequently Asked Questions (FAQs)



You've got questions? We've got answers. MDC is committed to helping you with your Architectural Metal project every step of the way. Please contact us if you have any questions or to request more information

## What Are Architectural Metals?

A collection of High Pressure Laminates with a thin metal surface and phenolic paper backing. These HPLs can be used for interior applications like wallcoverings, wall panels, and ceilings.

## What is Phenolic paper backing?

Phenolic paper backing is layers of impregnated Kraft paper bonded together.

## Is phenolic paper backed metal better than unbacked metal?

In many ways, phenolic paper backed metal is superior to unbacked items. The phenolic paper backing helps protect the laminate from being dented and damaged in shipping and fabricating (it does not make the product totally resistant to damage, so the fabricator still needs to take care). Phenolic paper backed metal is also easier on router bits and saw blades, so the fabricator should get more life out of these tools using the phenolic paper backed laminate.

## What is the difference between MDC Architectural Metals and other similar, competitive metal lines?

The main difference is the choice and variety of items that the MDC line offers. Other competitors specialize in standard melamine HPLs, whereas we focus solely on the metal market. The phenolic paper-backed HPLs are all made the same way and fabricated with the same standard tools. There is more of a difference when compared to some of the unbacked metals. A lot of these items do not have a phenolic paper backing. This makes the items a little more difficult to fabricate and a little harder on fabricators' tools.

## How can Architectural Metal be used in my project?

Recommended for vertical use. Claddings for walls or ceilings, doors or frames, furniture, and displays are just a few examples of areas for installation.

## How about size and thickness?

Thickness is approximately .035" with the exception of Hand Painted and stainless steel, which are .040" thick. Polished aluminum surfaces are anodized. Brushed aluminum and copper surfaces are lacquered. Sheet size is 4' x 8'.

## How is Architectural Metal fabricated?

Fabricated with the same tools used on any high pressure decorative laminate and bonded to the same type of substrates commonly used in the trade. Special care must be taken to avoid denting the surface with tools or scratching the surface with particles of metal. Carbide-tipped blades and bits are recommended. Dull blades will generate heat and scorch metal.

## How are the sheets shipped?

Architectural Metals can be shipped via truck, wooden crates, or rolled for courier shipment, depending on the pattern and size of the order. It is recommended that soon after receipt the sheets should be removed from the container and stored flat so excessive roll set does not take place.

## Is there any special treatment required before or after fabrication to ensure longevity of the product?

Anodization produces a hard surface that will not tarnish and has the high abrasion resistance of aluminum. All products are covered with a clear, peel-off mask to protect the finish. This mask should be left on during fabrication to avoid marring the surface.

## How should Architectural Metal be stored?

It is important to store the product flat and not on edge, as storing on edge can cause the sheet to bow after some time. Metal laminates should be stored face up in a cool, dry area and in a completely supported flat position. Use a top sheet of chipboard or similar material to hold stored sheets flat.



## What type of adhesive is recommended?

*Aluminum, Copper, and Hand Painted (Phenolic backed)* - Any contact cement or cold-set adhesive normally used with decorative laminates is suitable. Avoid adhesive spreading or setup on metallic surface. USE ONLY NAPHTHA OR BENZINE IN ADHESIVE CLEANUP - do not use lacquer solvents or other adhesive solvents, which attack lacquer coatings.

*Art Metals (unbacked)* - Use Titebond FastGrab Advanced Polymer Panel Adhesive for all primed, painted or suspected non-porous surfaces. Avoid adhesive spreading or setup on metallic surface.

## How should metal sheets be cleaned?

Make sure that the cleaning agent used is compatible with either our anodized or lacquered products prior to use. Clean surfaces with a soft cloth using household cleaner - waxes, Windex-type solutions, or ordinary soap and water. Good furniture or automobile waxes provide additional protection for all metal laminate surfaces.

## Are there any precautions to consider when handling the product?

Metal laminates will conduct electricity and can cause shocks or short circuits when in contact with ungrounded electrical circuits. This product is laminated aluminum, copper, or stainless steel of the highest quality and brilliance. Slight surface imperfections are normal. PLEASE INSPECT CAREFULLY PRIOR TO USE to ensure the material is suitable for your needs.

## Is counterbalancing necessary?

Counterbalancing is necessary as with other High Pressure Laminates to prevent warping of the substrate like wallcoverings, wall panels, ceilings and surfaces.

## Is there an option where counterbalancing isn't required?

Yes! The Artful Metals Collection is available on a variety of 4' x 8' unbacked metal substrates. Our unbacked metals are easy-to-install with no counterbalancing required and can be applied directly to drywall.

## The Art Metals designs have such a variety of unbacked metal substrates to choose from. How do I know which substrate to use for my project?

Already know what substrate you want? Great! If not, no worries! Please talk with us about your project and we can help you. Keep in mind that your choice of substrate plays a very critical role in image quality, as well as the look and feel that you want for your project. We can help you find what works best for you.

## MDC Interior Solutions

 847.437.4000

 [info@mdcwall.com](mailto:info@mdcwall.com)

 [mdc.is/metals](http://mdc.is/metals)

## Follow Us on Social



 Check MDC website for updated technical information



# Quick Reference Guide

## Product Quick Reference

Collection	Product Name & Finish	Item Number	4' x 8'	Rollable for Shipment
Aluminum	Polished Aluminum	904	✓	•
	Polished Smoke	1014	✓	•
	Polished Brass	914	✓	•
	Rose Gold	212	✓	•
	Brushed Aluminum	245	✓	•
	Brushed Stainless	256G	✓	•
	Brushed Bronze	944	✓	•
	Brushed Brass	934	✓	•
	Aluminum Mill	204	✓	•
	Aluminum Gun Metal	248	✓	•
	Gun Metal Mill	603/248	✓	•
	Brushed Aluminum Fine Hammered	924 HAM	✓	•
	Neptune Brushed Aluminum	924 NEP	✓	•
	Neptune Polished Smoke	1014 NEP	✓	•
	Neptune Rose Gold	212 NEP	✓	•
	Corrugated Brushed Aluminum	603/924	✓	•
	Corrugated Brushed Stainless Steel	603/256	✓	•
	Corrugated Mill Aluminum	603/209	✓	•
	Diamond Plate Brushed Aluminum	924 GEK	✓	•
	Diamond Plate Brushed Stainless	256 GEK	✓	•
	Diamond Mill Gun Metal	248 DIA	✓	•
	Diamond Polished Smoke	1014 DIA	✓	•
	Diamond Rose Gold	212 DIA	✓	•
	Titan Aluminum Gun Metal	248 BKE	✓	•
	Brushed Aluminum Mesh	924 NTZ	✓	•
	Brushed Stainless Mesh	256 NTZ	✓	•
	Black Mesh	11 NTZ	✓	•
	Antique Pewter Mesh	490 NTZ	✓	•
	Brushed Aluminum Ridges	924 PGQ	✓	•
	Brushed Stainless Ridges	256 PGQ	✓	•
	Brushed Stainless Reeds	256 PTK	✓	•
	Antique Pewter Reeds	490 PTK	✓	•
	Aqua Polished Smoke	1014 AQA	✓	•
	Aqua Rose Gold	212 AQA	✓	•
Waterfall Aluminum Gun Metal	248 HMS	✓	•	
Waterfall Rose Gold	212 HMS	✓	•	
Aluminum Rondo	202 RON	✓	•	

## Product Quick Reference

Collection	Product Name & Finish	Item Number	4' x 8'	Rollable for Shipment
Copper	Matte Copper	C400	✓	•
	Fine Hammered Copper	C471	✓	•
	Hammered Copper	C473	✓	•
	Antique Fine Hammered Copper	C462	✓	•
	Antique Copper Mesh	401 NTZ	✓	•
	Antique Copper Ore	C431	✓	•
Hand Painted	Patina Autumn Leaves	C421	✓	•
	Patina Onyx	C412	✓	•
	Patina Malchit	C414	✓	•
	Madrid	CA5	✓	•

## Art Metals Collection: Substrate Quick Reference

Collection	Substrate (Fusion)	4' x 8'	Crate Shipment Only
Art Metals	Aluminum, Mill Satin	✓	•
	Aluminum, Pebble	✓	•

Special order requirements; contact MDC Customer Care



# MDC

INTERIOR SOLUTIONS

400 HIGH GROVE BLVD  
GLENDALE HEIGHTS, IL 60139

T: 847.437.4000

F: 847.437.4017

MDCWALL.COM

INFO@MDCWALL.COM

