



IMPACT • ABRASION • STAIN RESISTANCE

DURATEC

WALL PROTECTION

SECTION: 102623



MDC

INTERIOR SOLUTIONS

MADE FOR THE WALL.
PERFORMS LIKE A FLOOR.



PREMIUM DURABILITY

Duratec Wall Protection is engineered to withstand scuffs, cuts, chemical exposures, and collision impact without showing visible signs of wear and tear.



LONG-LASTING STAIN RESISTANCE

No more heavy-duty cleaning agents. With Duratec Wall Protection, soap and water is all you will need to clean. And to disinfect, Duratec is strong enough to withstand full-strength bleach.



TOUGH BUT PRETTY

Don't compromise strength for aesthetics. Duratec Wall Protection is available in 7 deluxe patterns and 9 broad color options, as well as FRP selections, so your space will always look as beautiful as it is strong.

MORE THAN A WALLCOVERING.

Duratec has the aesthetics of a wallcovering and the performance features of rigid panels to ensure walls look beautiful and stay that way!



AUSTERE

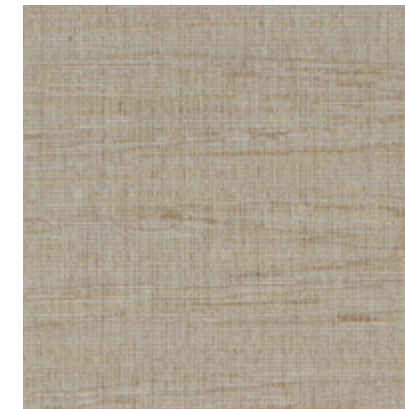
COLOR LINE



←
**VERSATILE
INSTALLATION**
Installs with clay-based adhesive;
removable with little or no wall
damage. Can be installed
seamlessly under hand rails
or full walls with no filler
strip needed.



MDV1061 OXFORD WHITE



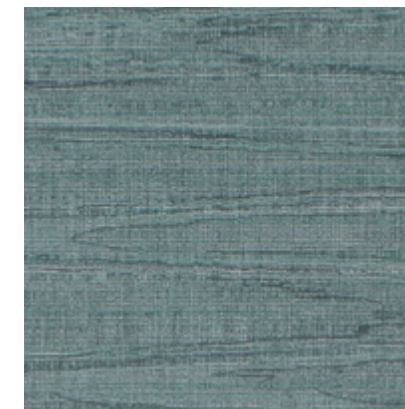
MDV1062 OYSTER



MDV1063 MINESHAFT



MDV1064 MIDNIGHT



MDV1065 CELADON



MDV1066 SAGE



MDV1067 CARMEL



MDV1068 CARMINE



MDV1069 COBBLER

INTREPID

COLOR LINE



◀
**WITHSTANDS
IMPACT**
Repeated contact by rolling carts,
wheelchairs, housekeeping, or
chairs will not do damage.



MDV1081 STORM



MDV1082 PASHMINA



MDV1083 MULBERRY



MDV1084 PETROL BLU



MDV1085 LINEN



MDV1086 CREME BRULEE



MDV1087 LATTE



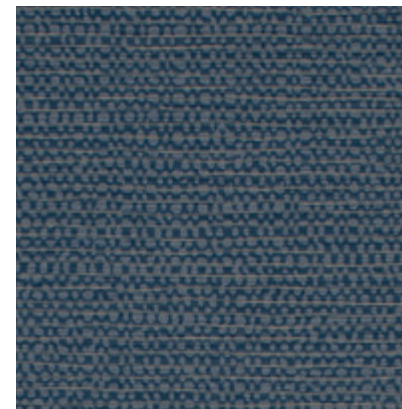
MDV1088 COFFEE BEAN



MDV1089 CINNAMON

OMICRON

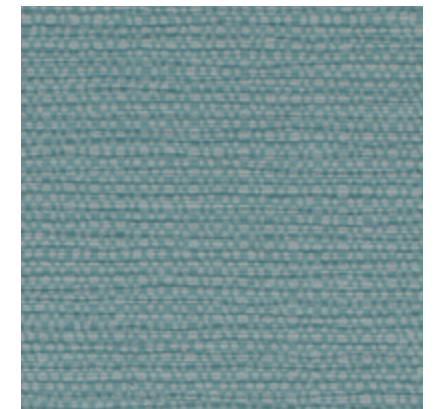
COLOR LINE



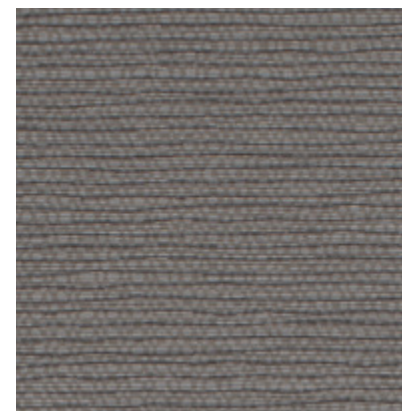
MDV2021 INDIGO



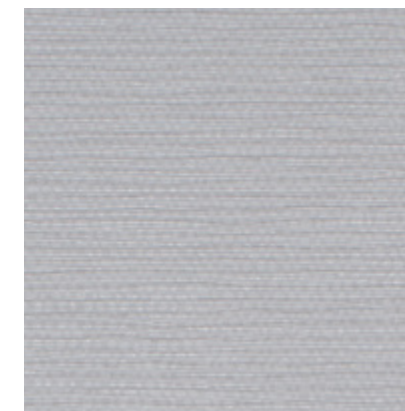
MDV2022 OPALINE



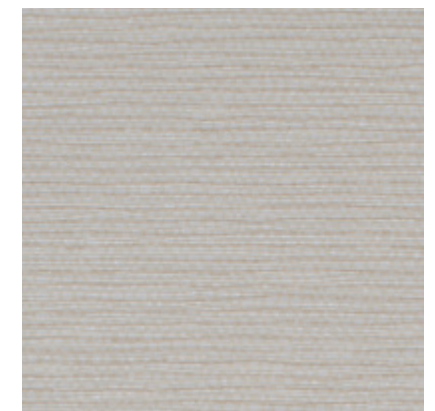
MDV2023 AZZURE



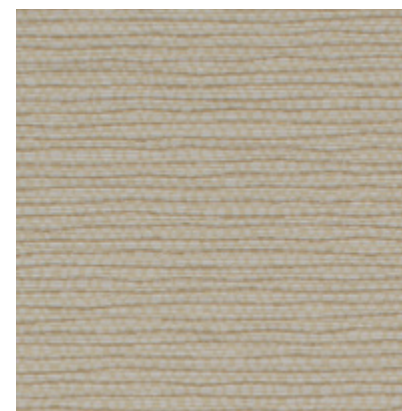
MDV2024 SLATE



MDV2025 ASPEN



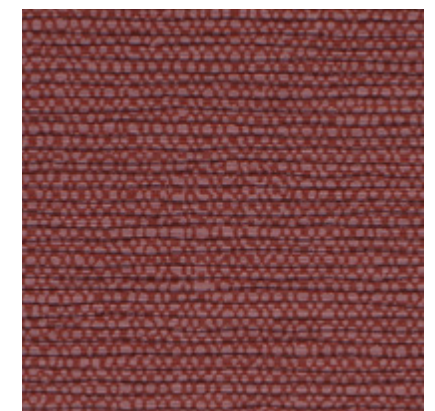
MDV2026 EGGSHELL



MDV2027 RAFFIA



MDV2028 FRENCH HORN



MDV2029 ROUGE

◀
EASY CARE & MAINTENANCE
Most stains are removable with soap and water. Durable enough to withstand full-strength bleach for disinfecting healthcare facilities.



MDV1041 HAZELNUT



MDV1042 SADDLE



MDV1043 MINK



MDV1044 TIMBER



MDV1045 COCONUT HUSK



MDV1046 CLOVE



MDV1047 SEA SPRAY



MDV1048 EMERALD



MDV1049 MINERAL



**RESISTS
 SCRATCHES
 & ABRASION**

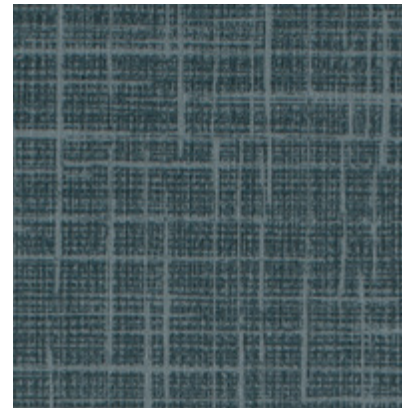
 Duratec is practically wear proof and stands up to repeated scuffing and abrasion. 10 times heavier than competitor products.

SPARTAN

COLOR LINE



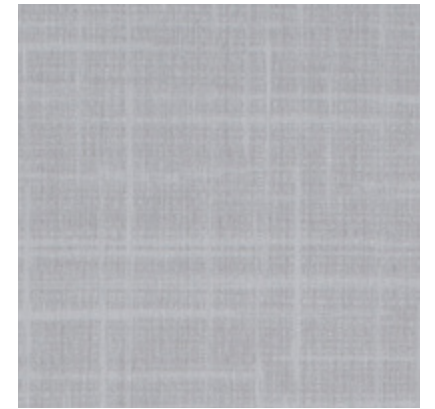
←
MAXIMUM RESILIENCE
Construction is similar to LVT with a proprietary top wear layer.



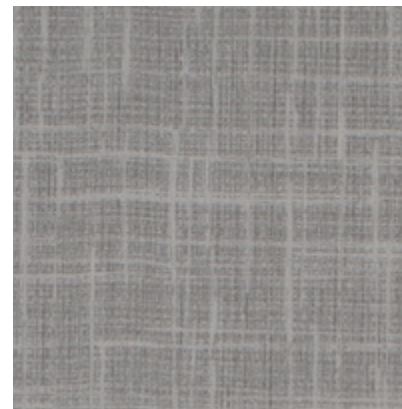
MDV1001 DARK TEAL



MDV1002 TEA LEAF



MDV1003 ASHEN



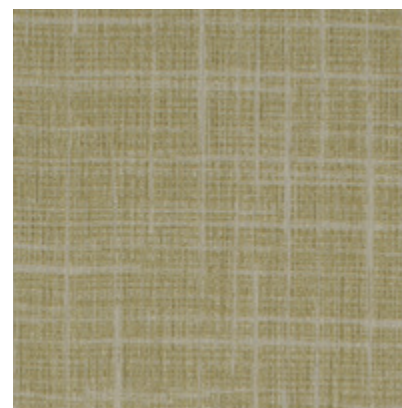
MDV1004 COBBLESTONE



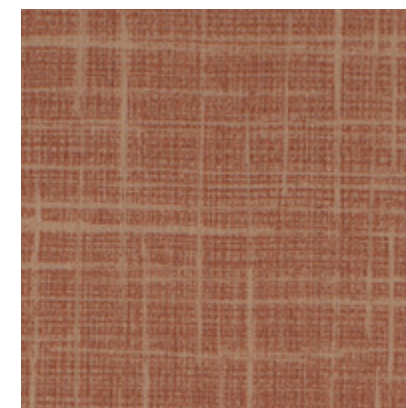
MDV1005 NOIR



MDV1006 CANDLELIGHT



MDV1007 SADDLE



MDV1008 PUMPKIN



MDV1009 ALABASTER




**TRANSCENDS
WALLCOVERINGS**
 Featuring the aesthetics of
 wallcovering with performance
 features approaching that
 of rigid panels.



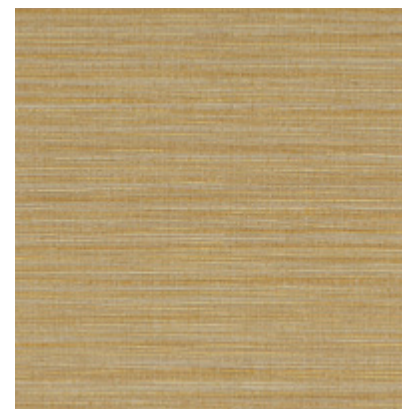
MDV2001 POPPY



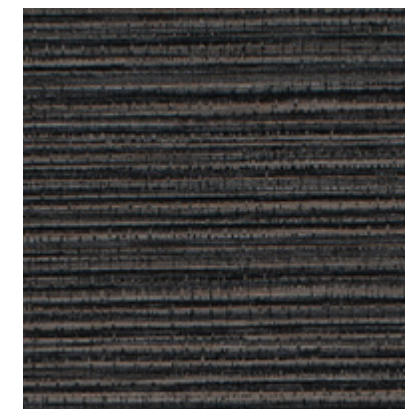
MDV2002 PARCHMENT



MDV2003 BRINDLE



MDV2004 MANILA



MDV2005 RIVER ROCK



MDV2006 DOVE



MDV2007 PLATINUM



MDV2008 WILLOW



MDV2009 MARINER

IRONWOOD

COLOR LINE



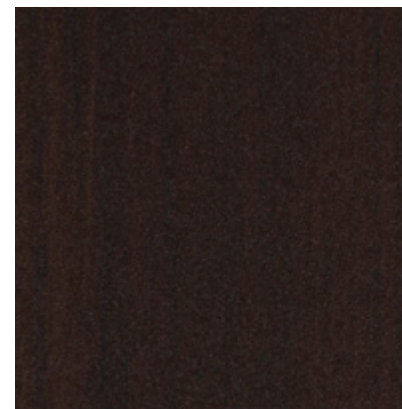
MDV1021 ACORN



MDV1022 BEECHNUT



MDV1023 OAK



MDV1024 ESPRESSO



MDV1025 CHERRY



MDV1026 DRIFTWOOD



MDV1027 BARNWOOD



MDV1028 GREYWOOD



MDV1029 WALNUT

←
**REPELS STAINS
& CHEMICALS**
Will resist almost all common stains.
Resists all alkali and acid-based
chemicals, bleach, alcohol,
and ammonia.

THE DURABILITY YOU CAN TRUST.

Duratec is the ideal multi-functional wall selection for patients, patrons, and everyone in between. Offering premium cleanability, hassle-free sanitation, and resistance against impact abrasion and general wear-and-tear, Duratec promises a healthy, convenient, and beautiful environment for all.



SPECIFICATIONS

Weight	38 oz./LYD
Width	50" - 52"
Thickness	.035"
Adhesive	Heavy Duty Clay
Backing	Poly Cotton Drill
Installation	Random Reverse

PERFORMANCE

Fire Rating	ASTM E-84 Class A
Federal Specifications	Meets or exceeds CCC-W-408D for Type II
Durability	Semi-Rigid Impact Resistant
Tensile Strength	ASTM D-751 200x118 (MD x CD)
Tear Strength	ASTM D-1922 3200/3200 (MD x CD)
Impact Resistance	ASTM D-5420 135 (lbs. / ft.)
Abrasion Resistance	ASTM D-1045 Less than .05% (wt. loss %)
Stain & Chemical Resistance	ASTM D1308 Meet or exceed

TRANSCENDS WALLCOVERINGS AND RIGID PANELS

Featuring the aesthetics of wallcovering with performance features approaching that of rigid panels.

VERSATILE INSTALLATION

Installs with clay-based adhesive; removable with little or no wall damage. Can be installed seamlessly under hand rails or full walls with no filler strip needed. Will wrap curved walls and columns.

MADE FOR THE WALL. PERFORMS LIKE A FLOOR.

Construction is similar to LVT with a proprietary top wear layer.

WITHSTANDS IMPACT

Repeated contact by rolling carts, wheelchairs, housekeeping, or chairs will not do damage.

RESISTS SCRATCHES & ABRASION

Duratec is practically wear proof and stands up to repeated scuffing and abrasion. 10 times heavier than competitor products.

REPELS STAINS & CHEMICALS

Will resist almost all common stains. Resists all alkali and acid-based chemicals, bleach, alcohol and ammonia.

EASY CARE & MAINTENANCE

Most stains are removable with soap and water. Durable enough to withstand full strength bleach for disinfecting healthcare facilities.

Designed by **inVinci** SURFACES

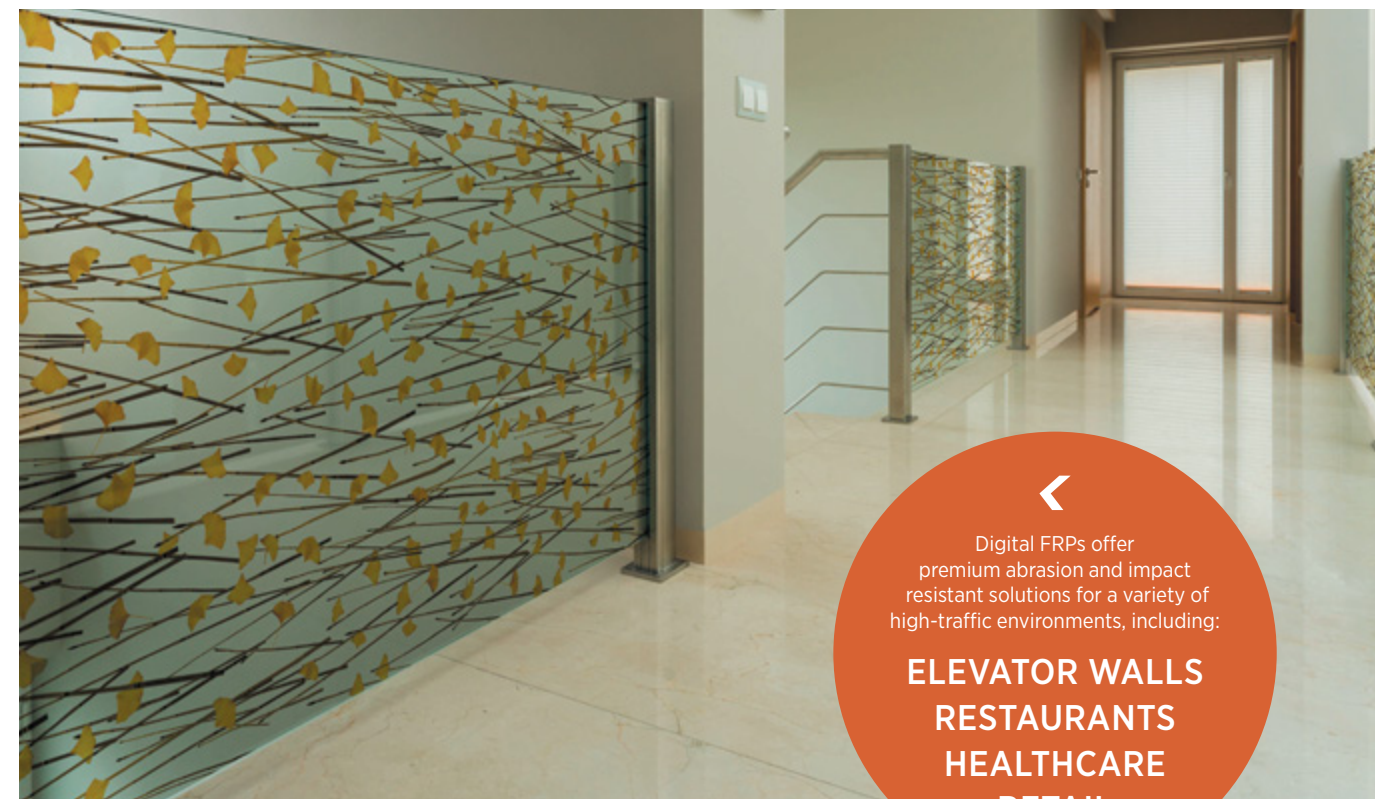


DIGITAL FRP | DURATEC ACCESSORY

PERFORMANCE SURFACES FOR HIGH DEMAND AREAS.

MDC's Fiberglass Reinforced Plastic (FRP) panels are expertly engineered to not only withstand wet environments, but also those environments exposed to higher rates of collision impact. Completely washable, wipeable, and easy to clean, our panels promise low maintenance paired with high style, every time.

DIGITAL FRP

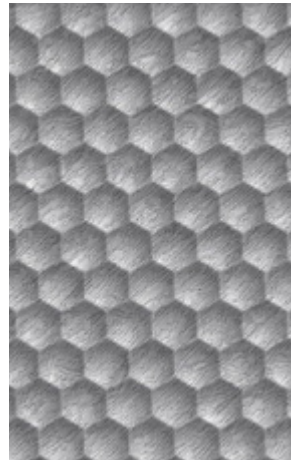


◀
Digital FRPs offer premium abrasion and impact resistant solutions for a variety of high-traffic environments, including:
ELEVATOR WALLS
RESTAURANTS
HEALTHCARE
RETAIL

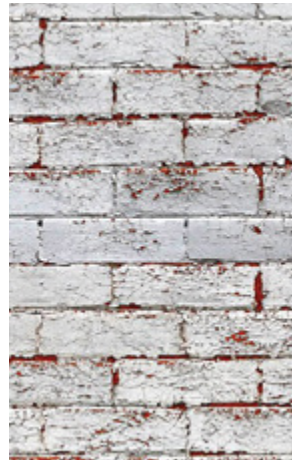
DIGITAL FRP

OUR EVER EXPANDING DIGITAL LINEUP With over 100 design options to choose from, as well as new styles added every season, you're sure to find the perfect solution for your next project with MDC's FRP panel offerings.

SEE ALL
100+
PATTERNS AT
MDCWALL.COM
←



HONEYCOMB



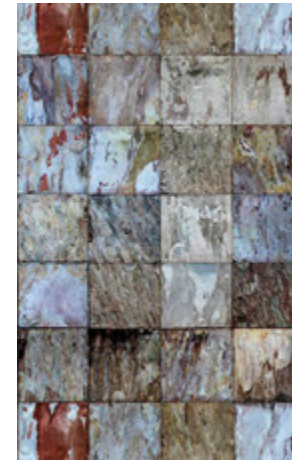
BRICK WALL,
PEELING PAINT



UNDULATION ON WOOD



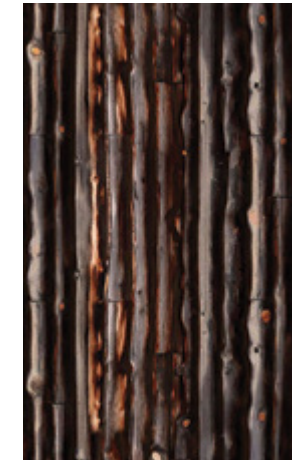
BIRCH



ANCIENT STONE TILES



LEAVES MODERN BLUE



MOUNTAIN SIDING MURAL



ARTFUL METAL



SEDONA TILES



GEODE NATURAL



GREEN TWIGS



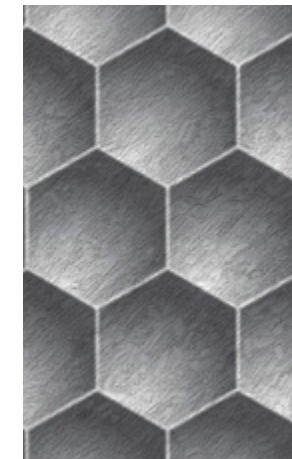
END GRAIN



HEDGEROW INDIGO



STONE HARVEST



HONEYCOMB CARVE,
LARGE



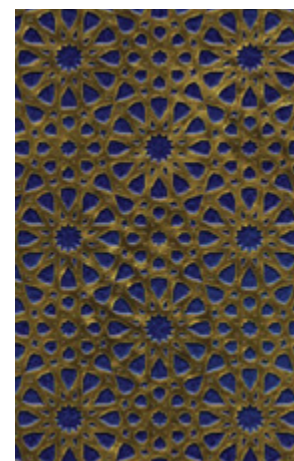
CUBISM RUSTED STEEL
LARGE



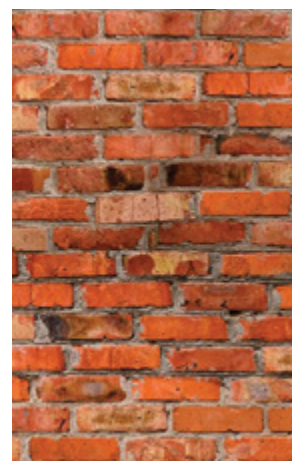
GINKGO REEDS



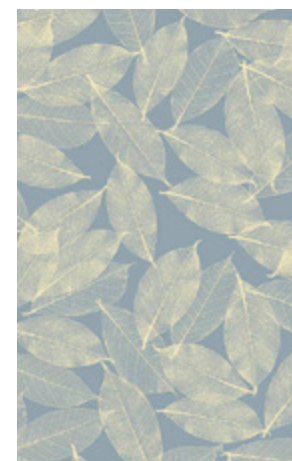
LINEAR REEDS



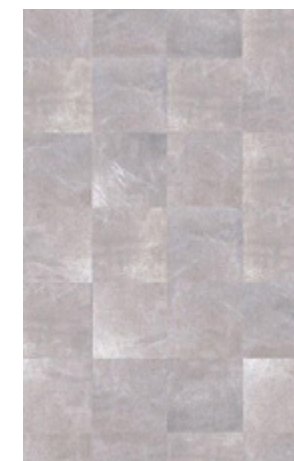
KING OF PERSIA



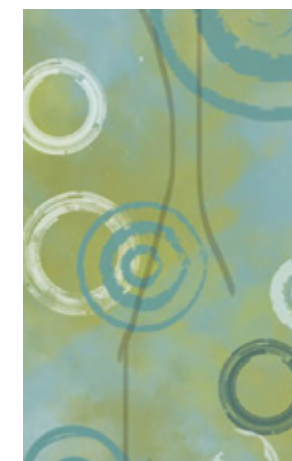
BRICK WALL



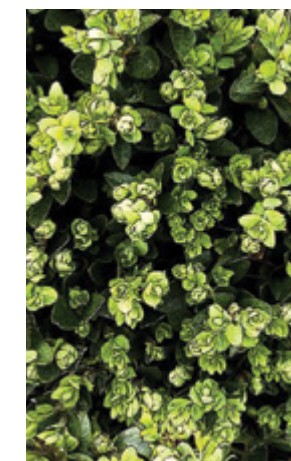
LEAVES CREAM
BLUE BACKED



BURNISHED SILVER



GREEN BLUE ART



GREENERY

PROVEN DURABILITY & VERSATILITY



DIGITAL FRP FEATURES

- Easy to install and clean
- Abrasion and impact resistant
- Chemical resistant
- Stain resistant
- Passes multiple sanitary codes
- Custom art capabilities
- Suitable for back lighting
- UV resistant (digital printing)
- Class A fire rated options available

SPECIFICATIONS

Panel Type	Sheet Size	Lbs. per sheet	Lbs. per sq. ft.
Clear	4' x 94" x 0.045"	10.8 lbs	0.34 lbs
Clear	4' x 94" x 0.060"	14.40 lbs	0.45 lbs
White	4' x 8' x 0.090"	25 lbs	1.28 lbs

DIGITAL FRP PERFORMANCE

Fire Rating*	ASTM E-84 Class A (.045") Class C (.060" and above)
Barcol Hardness	ASTM D-2538 40
Notched Izod Impact Resistance (ft-lbs/in)	ASTM D-256 7.0
Thermal Coefficient of Lineal Expansion (in/in/F)	ASTM D-696 0.0000160
Water Absorption (%)	ASTM D-570 0.17
Specific Gravity	ASTM D-792 1.53
CAN/ULC Fire Rating	S102-M88
Abrasion	NEMA LD3-2005 9,150 cycles

*Special order thicknesses could alter fire rating. Please inquire at time of order.

WHITE FRP

White FRP panels are smooth to the touch and available in Gloss and Matte White options (4' x 8' sheets). They are designed to resist abrasion and other collision impact and are suitable for use as wallcoverings, wainscoting, elevator walls, signage, and POP display.

CLEAR FRP

With a second surface imaging plus the addition of a white backer, Clear FRP is highly durable and resistant to scratching, making it the perfect wall protection solution for high traffic areas as well as various applications in the healthcare environment.

DURATEC ACCESSORIES

With rigid wall panels, corner guards and hand rails, your space will hold up to wear and tear year after year.



DURATEC ACCESSORIES



CORNER GUARD

MDP-6 _____
(3-Digit Color Code)

3" W x 3" H x 0.375" D

This 90° corner guard offers protection in an array of colors. Custom corner angles can also be accommodated.

FEATURES

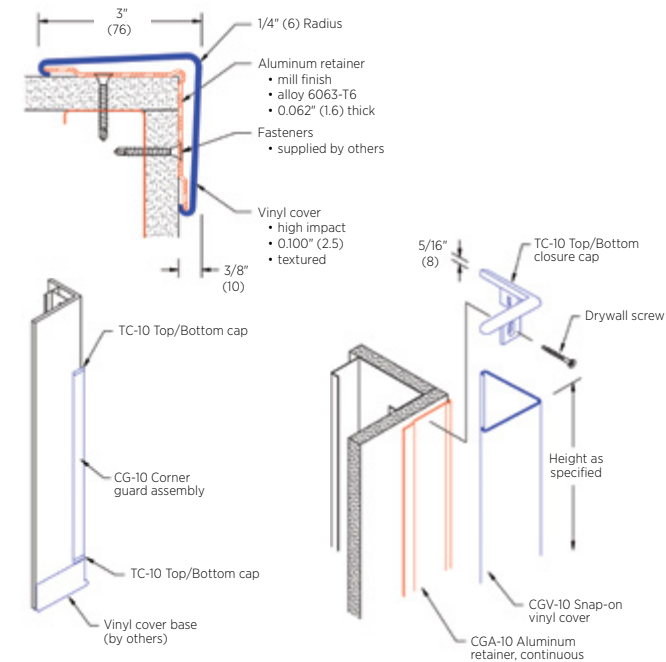
Length	4' - Custom lengths available
Texture	Standard pebble
Fire Rating	Class A

FINISH

Vinyl	70 Standard accessory colors
Aluminum Retainer	Mill finish #405

MOUNTING

Drilled	Countersunk holes for ABSS-134 #6 x 1 1/2" (38) oval head sheet metal screw supplied separately as required
---------	---



CORNER GUARD

MDP-7 _____
(3-Digit Color Code)

1.5" W x 1.5" H x 0.060" D

Our rigid vinyl corner guards provide medium to heavy level protection for all regular corners.

FEATURES

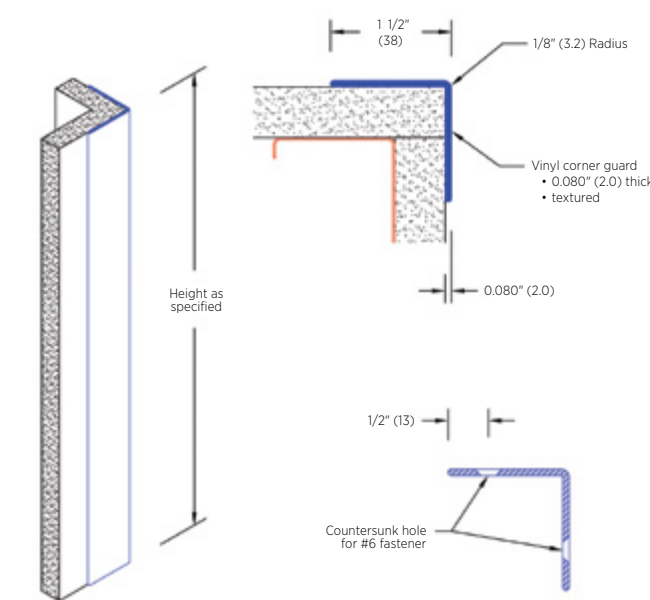
Length	8' - Custom lengths available
Texture	Standard pebble
Fire Rating	Class A

FINISH

Vinyl	70 Standard accessory colors
-------	------------------------------

MOUNTING

Tape	ADH-4042 Double sided adhesive tape factory applied to corner guard
------	---



HANDRAIL

MDP-8 _____
(3-Digit Color Code)

144" W x 5.5" H x 1.5" D

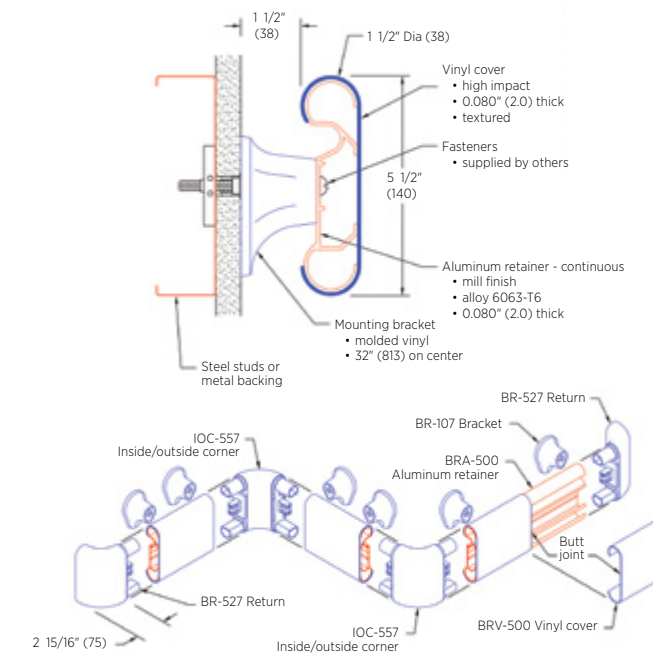
A universal handrail for all applications, the BR-500 combines affordability with design flexibility.

FEATURES

Length	12'
Texture	Standard pebble
Accessibility	ADA compliant
Fire Rating	Class A

FINISH

Vinyl	70 Standard accessory colors
Molded	Molded end caps, inside and outside corners (with hardware)



WALL GUARD

MDP-9 _____
(3-Digit Color Code)

144" W x 5" H x 1.0625" D

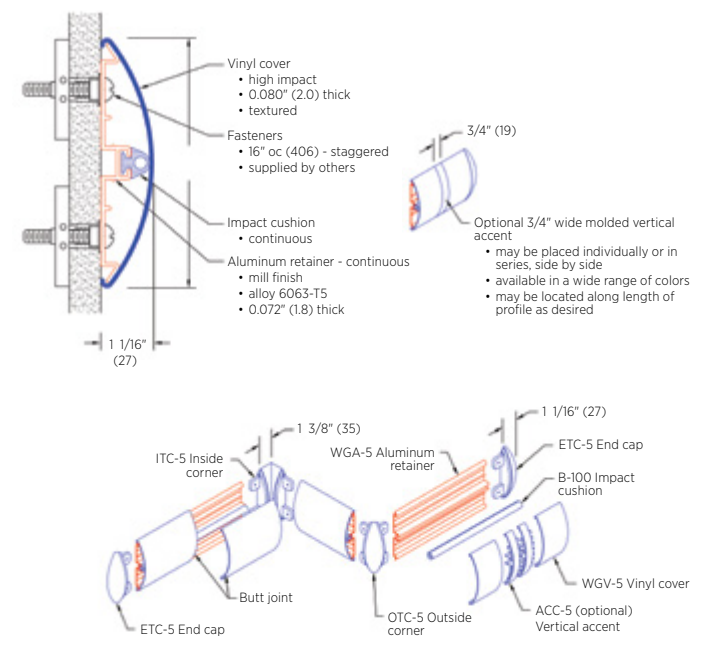
Our high impact Crescent™ series has an appealing, gentle shape offering a fresh alternative to traditional rectangular designs.

FEATURES

Length	12'
Texture	Standard pebble
Fire Rating	Class A

FINISH

Vinyl	70 Standard accessory colors
Molded	Molded end caps, inside and outside corners
Accents	Molded vertical accents available



DURATEC ACCESSORIES



WALLCOVERING

MDP-1 _____
(3-Digit Color Code)

96" W x 48" H x 0.060" D
Rigid vinyl wallcovering provides design variations as well as impact protection for a myriad of areas.

FEATURES

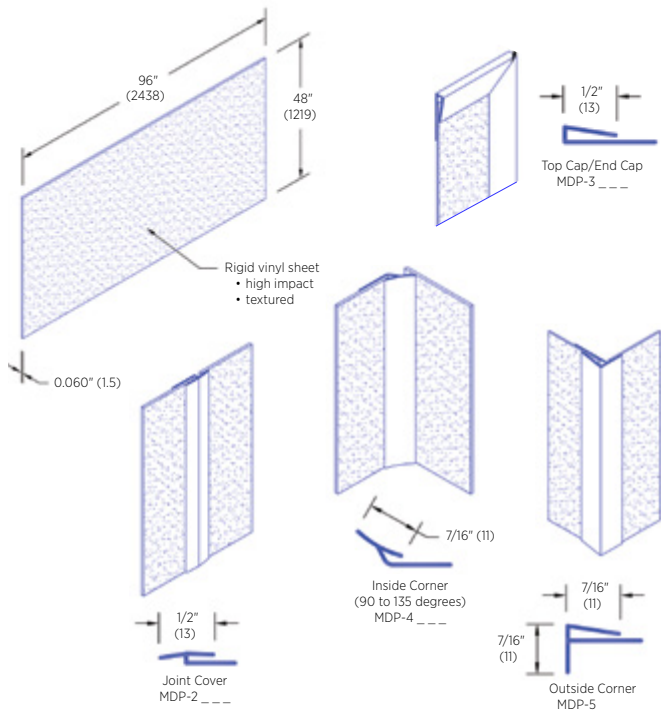
Stock size	4' x 8' sheets
Texture	Standard pebble
Fire Rating	Class A

FINISH

Vinyl	70 Standard accessory colors
-------	------------------------------

MOUNTING

Adhesive	ADH-60 mastic adhesive, supplied separately
----------	---



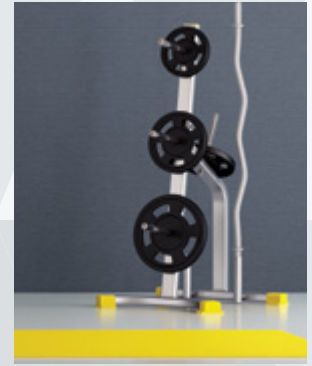
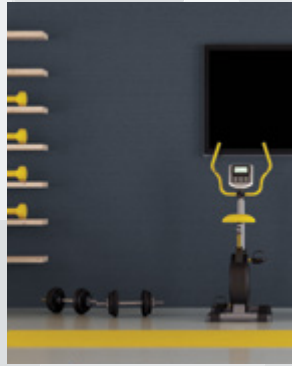
STANDARD ACCESSORY COLORS

Add 3-digit color number to item prefix when ordering.

010 White	301 Linen White	554 Mission White	541 White Sand	361 Pearl	370 Eggshell	313 Champagne	648 Monterey	411 Pumice	555 Wheat
193 Wheat	002 Ivory	263 Pale Yellow	569 Saffron	497 Chablis	676 Dover White	268 Doeskin	379 Mojave Sand	148 Desert Sand	003 Tan
682 Khaki Brown	718 Silkworm	021 Cappuccino	113 Toffee	316 Shoreline	486 Caisson	359 Ginger Spice	288 Mocha	694 Café Au Lait	004 Brown
385 Beige Desert	269 Ecru	494 Lavender Heather	381 Dawn	373 English Rose	304 Victorian Rose	234 Plumberry	380 Cordovan	022 Woodlands	293 Sea Foam
377 Teal	382 Stormy Blue	371 Sage Green	376 Pale Jade	300 Grotto	156 Hunter Green	175 Amazon	029 Blue Ice	369 Blue Fog	265 Windsor Blue
490 Blue Bird	281 Bermuda	520 Brittany Blue	583 Alexis Blue	176 Taupe	238 Bone	096 Portobello	483 Harvard Gray	297 Chinchilla	454 Chateau
210 Silver Gray	094 Summer Fog	289 Pearl Gray	005 Gray	452 Black Pepper	451 Vaporize	001 Black	421 Dandelion	255 Monarch	337 Carnival Red

Designed by

inVinci
SURFACES



MDC

INTERIOR SOLUTIONS

400 HIGH GROVE BLVD
GLENDALE HEIGHTS, IL 60139
T: 800.621.4006
T: 847.437.4000
F: 847.437.4017
MDCWALL.COM
INFO@MDCWALL.COM