

zintra<sup>®</sup>  
MESH BAFFLES



MDC  
INTERIOR SOLUTIONS

## Perfectly imperfect ceilings

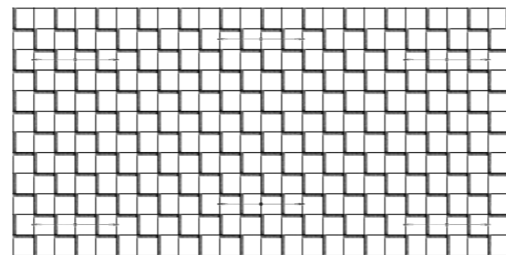
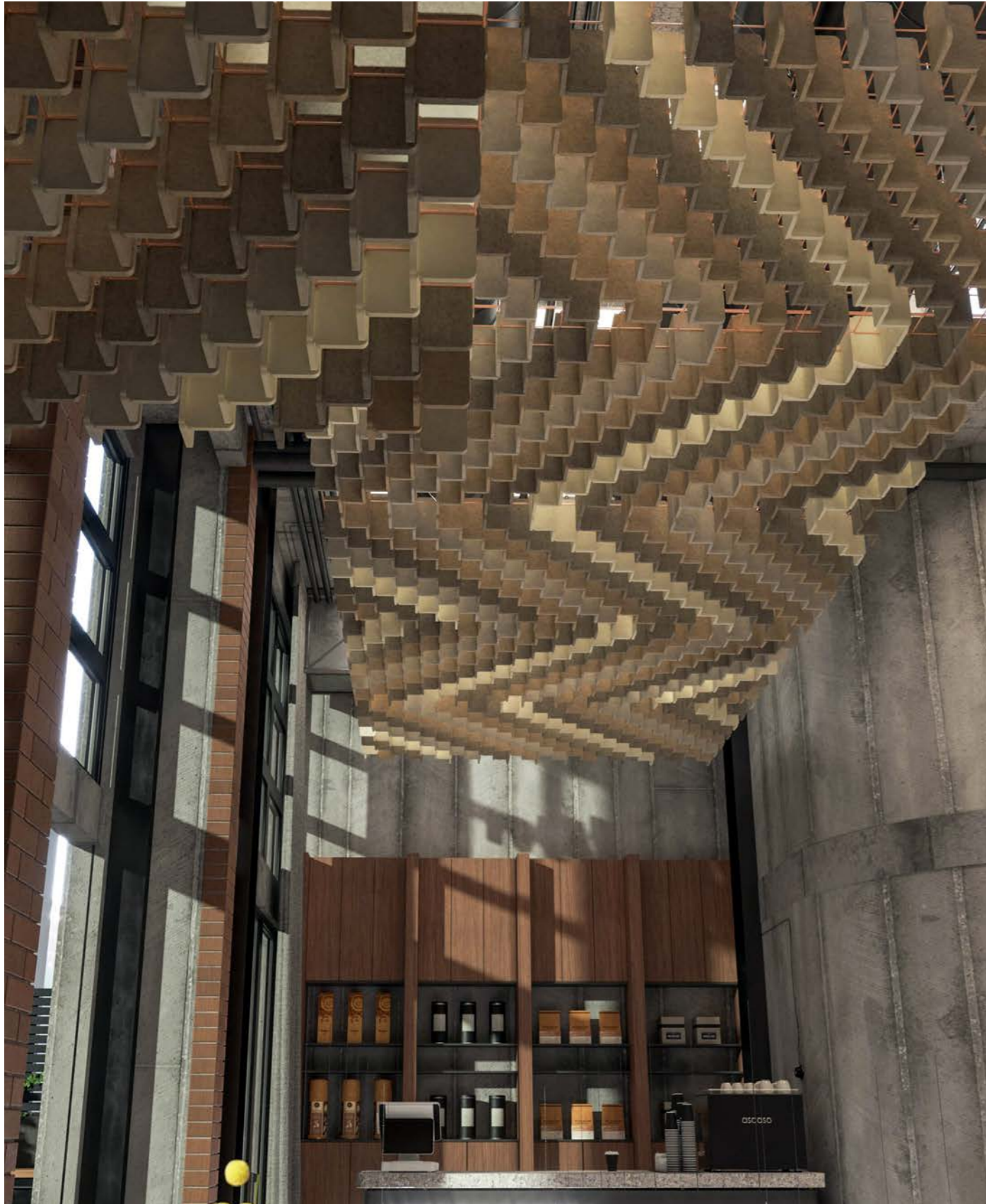
Using a unique interconnecting system, Mesh Baffles create artistic statements or wall-to-wall features that transform the aesthetics and acoustics of any ceiling.

Their lightweight materials, clever mounting kit and simple mesh connectors make them easy to cut, effortless to hang and simple to configure.

Made from Zintra, the interchangeable, acoustically tuned 8" quills hang from the mesh in a range of pre-configured designs, colors and prints, that morph with a change in light or perspective.

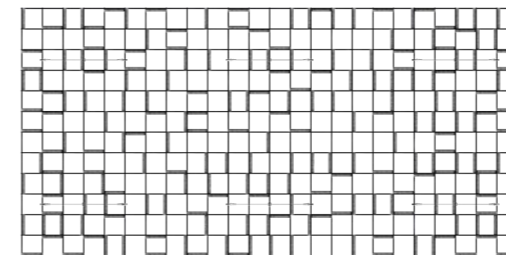
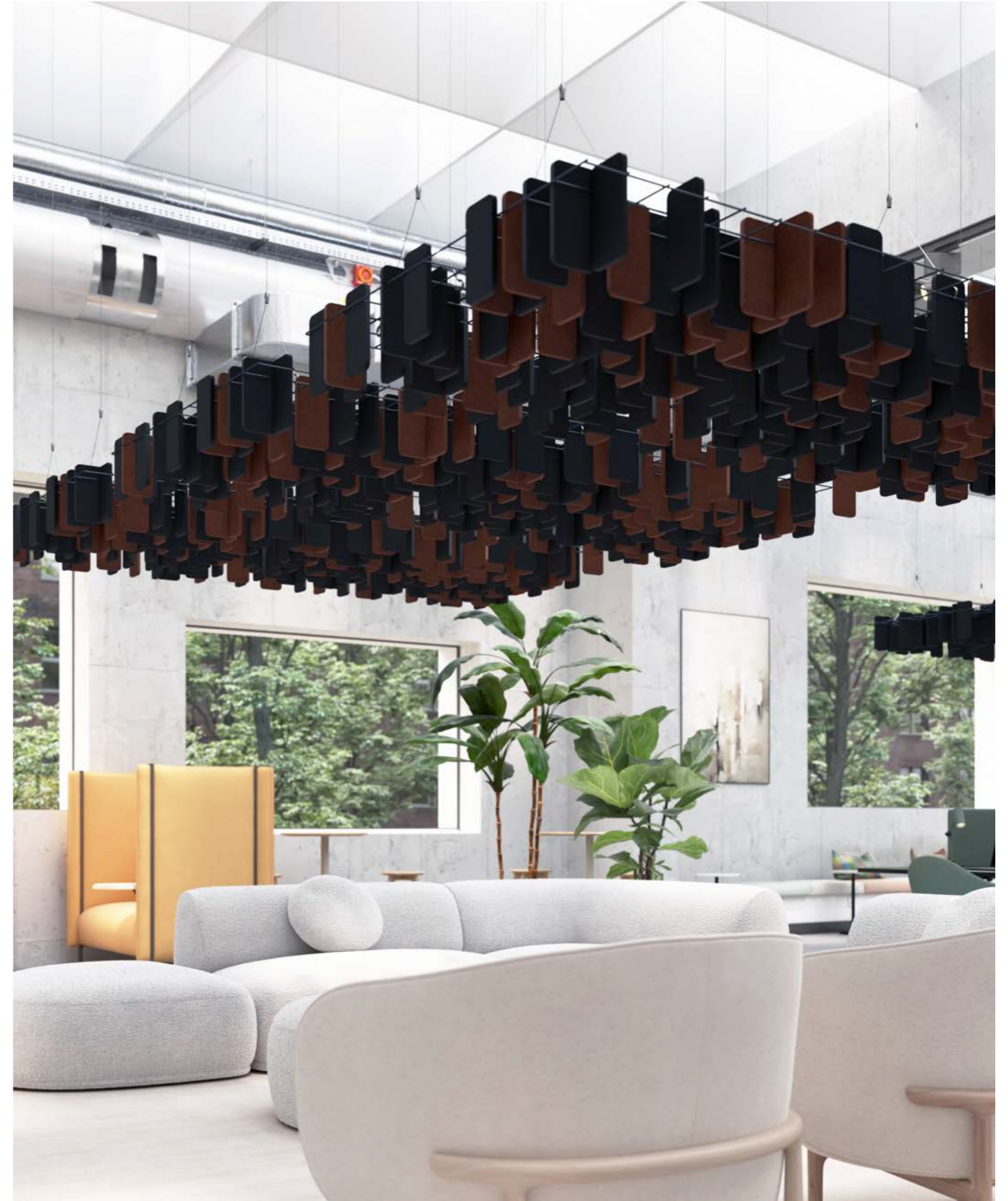
Ceilings never have to be the same again.





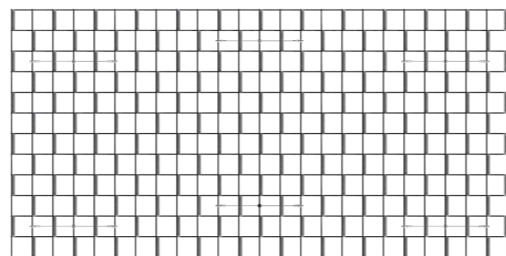
**HERRINGBONE BAFFLES**

Product: Zintra Mesh Baffles Herringbone | Color: Linen + Ecu + Fossil + Ivory



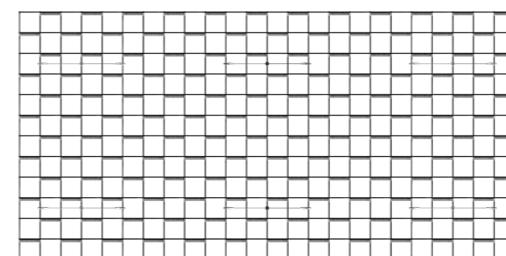
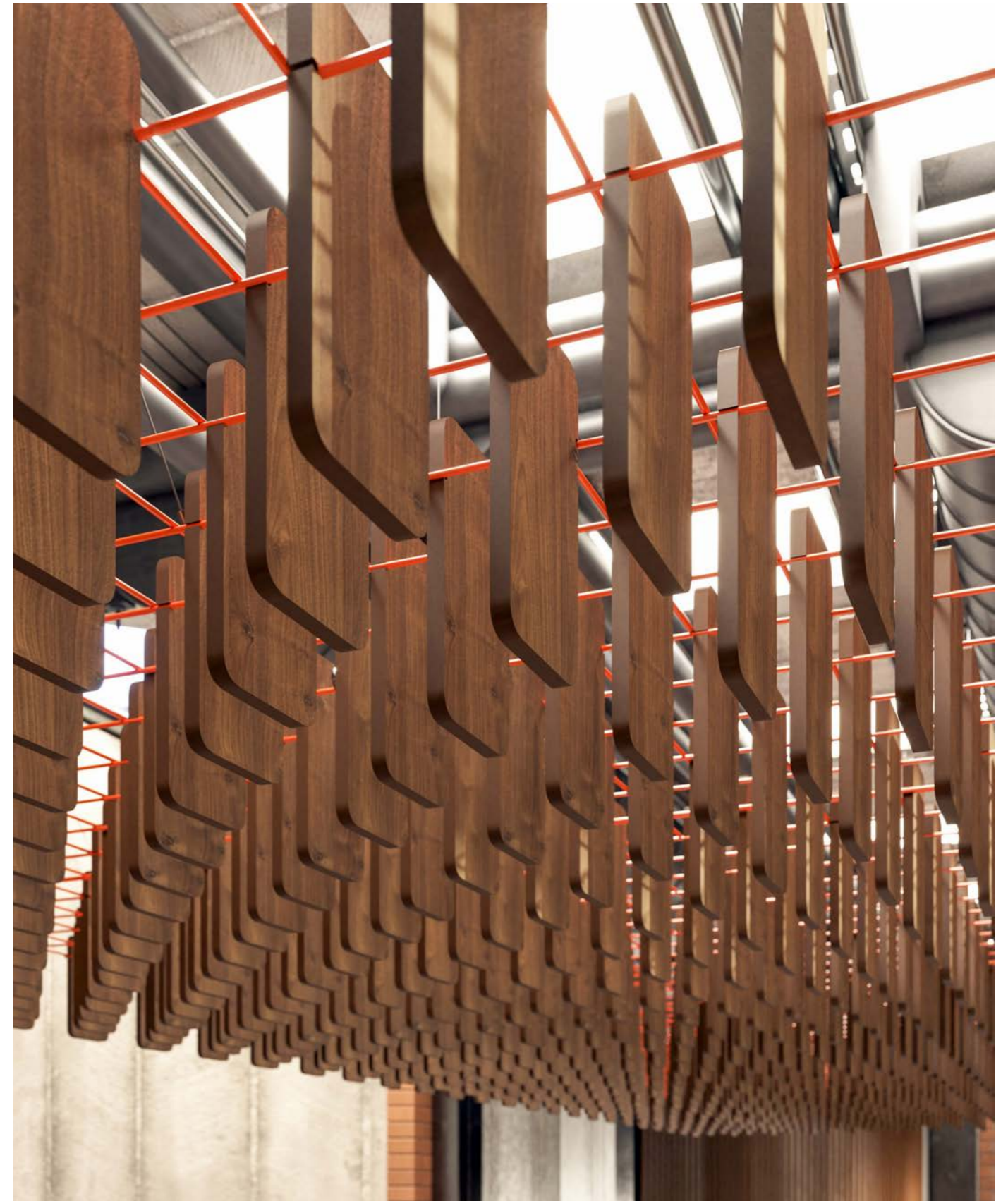
**RANDOM BAFFLES**

Product: Zintra Mesh Baffles Random | Color: Brick + Midnight



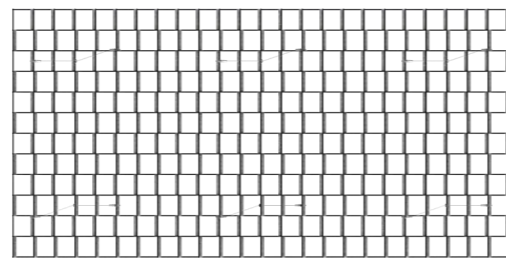
**SHORT OFFSET BAFFLES**

Product: Zintra Mesh Baffles Short Offset | Color: Sunshine + Chambray + Sky



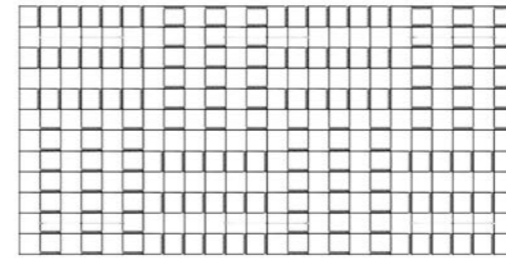
**LONG OFFSET BAFFLES**

Product: Zintra Mesh Baffles Long Offset | Color: Premium Wood Color



**OFFSET BAFFLES**

Product: Zintra Mesh Baffles Offset | Color: Cadet

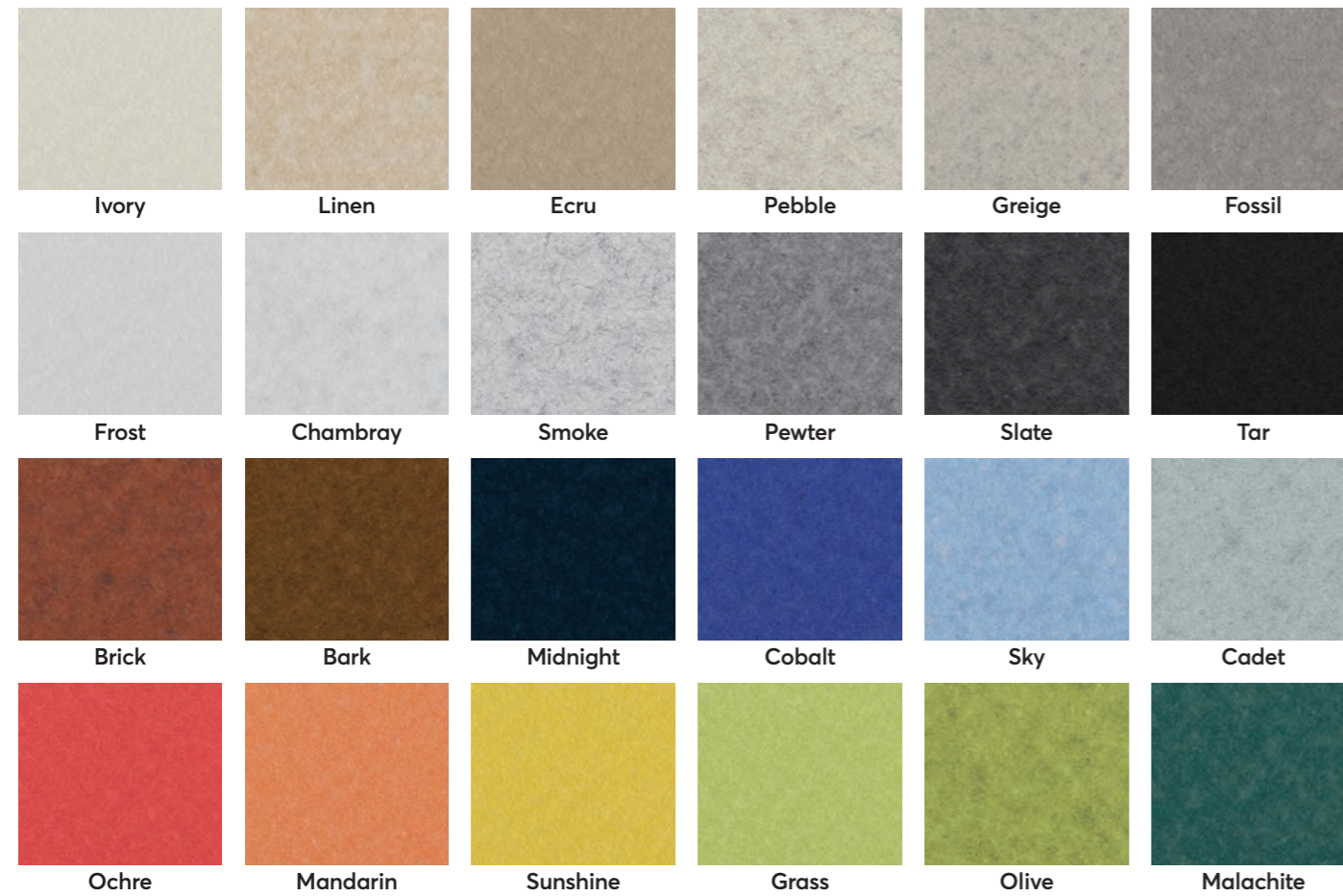


**CHECKERED BAFFLES**

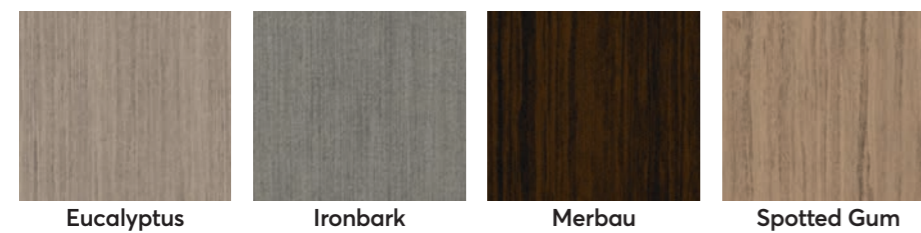
Product: Zintra Mesh Baffles Checkered | Color: Ivory + Greige

## Solid & Timber Colors

### SOLID COLORS:



### TIMBER: Stocked wood grain, printed single or double sided.



### POWDER COAT COLORS:



Also available in 12 Premium Wood and 18 Premium Material.

## Specifications

|                            | Offset   | Short Offset | Long Offset | Herringbone | Checkered  | Random     |
|----------------------------|--|--------------|-------------|-------------|------------|------------|
| <b>System Includes</b>     | 1 x Powdercoated Mesh + 6 x Y-Hook Cable Hangers + 5 x Wire Rope Clamps  |              |             |             |            |            |
| <b>Quills:</b>             | 290 Quills   | 150 Quills   | 160 Quills  | 290 Quills  | 160 Quills | 220 Quills |
| <b>Dimensions</b>          | Individual Quill 4" (106mm) w x 8.2" (208.9mm) h x 0.5" (12mm) d   |              |             |             |            |            |
| <b>The Americas:</b>       | 48" (1219mm) w x 8.2" (208.9mm) h x 96" (2438mm) l   |              |             |             |            |            |
| <b>Australia/Asia:</b>     | 1200mm w x 208.9mm h x 2400mm l  |              |             |             |            |            |
| <b>Material</b>            | Zintra Acoustic Panel - 100% Solution Dyed (Color Through) Polyester   |              |             |             |            |            |
| <b>NRC Rating</b>          | NRC Up to 1.0  |              |             |             |            |            |
| <b>PET Thickness</b>       | 1/2" (12mm)  |              |             |             |            |            |
| <b>Application</b>         | Indoor Only  |              |             |             |            |            |
| <b>PET Colors</b>          | 24   |              |             |             |            |            |
| <b>PET Timber</b>          | 4  |              |             |             |            |            |
| <b>PET Prints</b>          | 12 Premium Wood; 18 Premium Material   |              |             |             |            |            |
| <b>Powder Coat Colors</b>  | 12   |              |             |             |            |            |
| <b>Customizable</b>        | Get in touch to chat through your project requirements.  |              |             |             |            |            |
| <b>Assembly</b>            | Assembly Required  |              |             |             |            |            |
| <b>Installation</b>        | Check out the Mesh Baffles Installation Guide on our website   |              |             |             |            |            |
| <b>Fire Rating</b>         | ASTM-E84 - Class A classification<br>AS ISO 9705 - 2003 - Group 1 classification<br>EN-13501 - B-s2-d0 classification  |              |             |             |            |            |
| <b>Lightfastness</b>       | AATCC 16.3, Option 3: Panel color change at 40AFU is 4.5   |              |             |             |            |            |
| <b>Temperature</b>         | Maximum temperature exposure is 240°F (115°C)  |              |             |             |            |            |
| <b>Moisture Absorption</b> | Polyester fibre when exposed to an atmosphere of 120°F (49°C) at 90% relative humidity for four days showed moisture absorption of less than 0.03% by weight   |              |             |             |            |            |
| <b>VOC Testing</b>         | Standard Method Version 1.2 for CDPH 01350: PASS for all testing scenarios   |              |             |             |            |            |
| <b>Care Instructions</b>   | <p>Remove spills immediately using damp, clean cloth.</p> <p>Dab Zintra with a clean, soft white cloth dampened with a mild solution of liquid detergent and warm water. Repeat using only clean water, then pat dry with a lint free cloth.</p> <p>Avoid using wax polishes, solvents or concentrated abrasives.</p> <p>For more difficult stains, dampen a soft white cloth with a solution of household bleach (10% bleach / 90% water). Dab gently. Repeat using only a clean, water dampened cloth to remove bleach concentration then pat dry with a lint free cloth.</p> <p>Always test in an inconspicuous area first. If care instructions don't deliver the expected results, cease cleaning method immediately and contact Baresque for assistance.</p> |              |             |             |            |            |
| <b>Made In</b>             | USA  |              |             |             |            |            |
| <b>Warranty</b>            | 5 years  |              |             |             |            |            |



# MDC

INTERIOR SOLUTIONS

ZINTRA MESH BAFFLES

[mdc.is/zintra](https://mdc.is/zintra)

[info@mdcwall.com](mailto:info@mdcwall.com)

800.612.4006 | 847.437.400