

# DIMENSION WALLS

TEXTURED  
DECORATIVE PANELS



**MDC**  
INTERIOR SOLUTIONS



## TABLE OF CONTENTS

ABOUT MDC	2
WALL PANELS	4
PANEL DESIGNS	18
MDC FINISHES	24
CUSTOM DESIGNS	28
QUICK REFERENCE GUIDE	30
HOW TO ORDER	32
INSTALLATION OVERVIEW	33
PRODUCT SPECIFICATIONS	34





ELLIPTICAL / NEW PENNY



CRACK ME UP / RUBBED BRONZE

# ABOUT MDC

After more than fifty years in the commercial interiors industry, MDC has earned a reputation for innovative products, value and service.

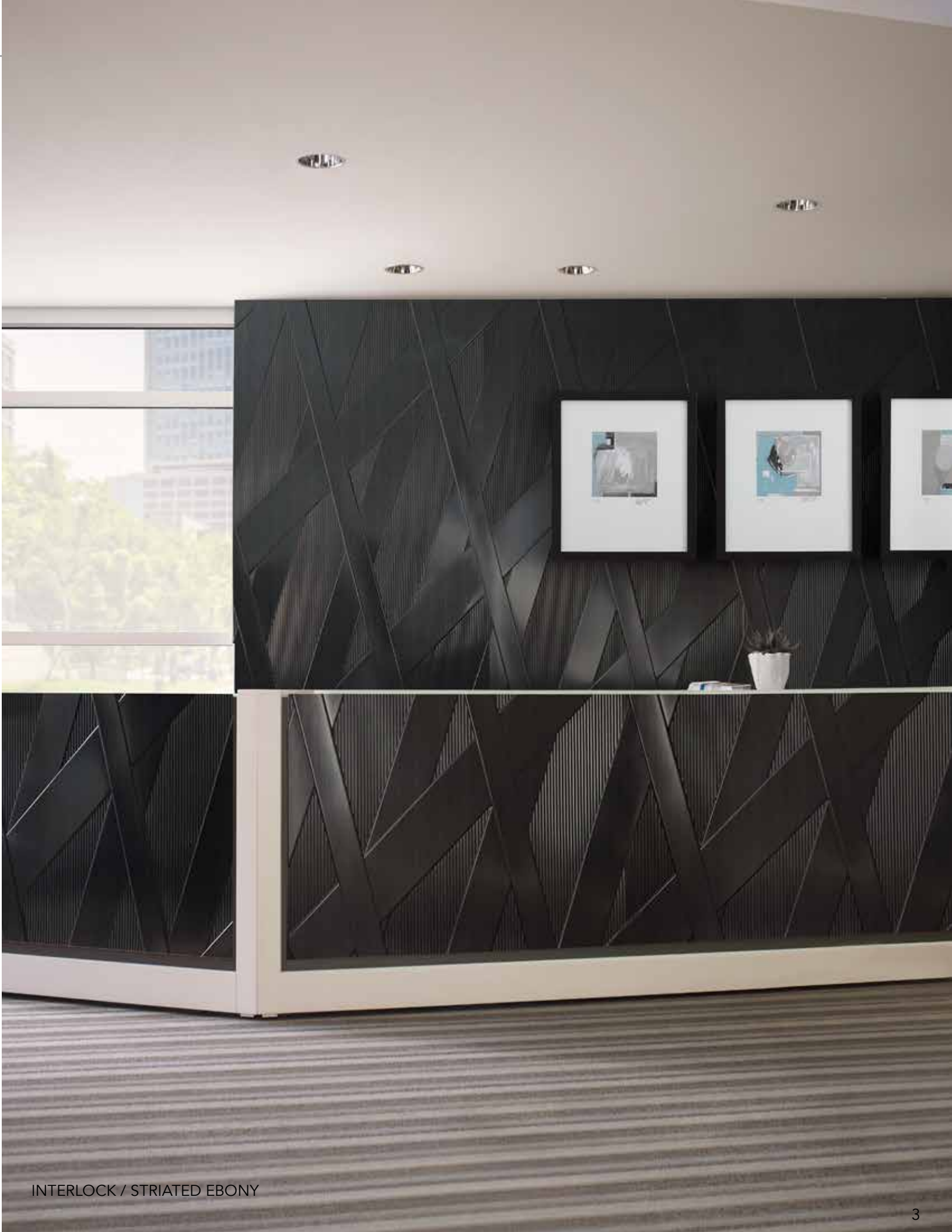
MDC's portfolio includes eco-friendly products, digital imaging solutions; paint/coatings; handcrafted wall designs; dry-erase coatings; decorative wall panels; luxury textiles; foils; grasses; woods, vinyls, and architectural acoustic solutions. Our company is known for its ability to produce solutions that meet the needs of the design community.

MDC is actively involved in product research and development, as well as, the ongoing and extensive training of our associates. These efforts keep us in

the forefront with new materials and technologies. In addition, our team of sales representatives is known to be among the most knowledgeable in the industry.

At MDC, we're constantly expanding our portfolio to keep it fresh. We've learned to pay attention to quality, durability, ease of installation, and sustainability in addition to color, texture and visual interest.

We offer a range of products that help our clients achieve their goals and realize their design vision in new construction, renovation, hospitality, healthcare, retail, education, or corporate settings.





# WALL PANELS

Use textured, impact-resistant, decorative panels to add visual interest with an edge to your space.

From focal point to casual mood-setting, our 4' x 8' textured wall panels are available in a variety of textures and colors. Some panels are available as 4' x 10' sheets (See the Quick Reference Guide on page 32). Panels can be applied to flat or curved surfaces, walls, columns and more. Lower-profile designs provide maximum durability for high traffic areas.

## FEATURES

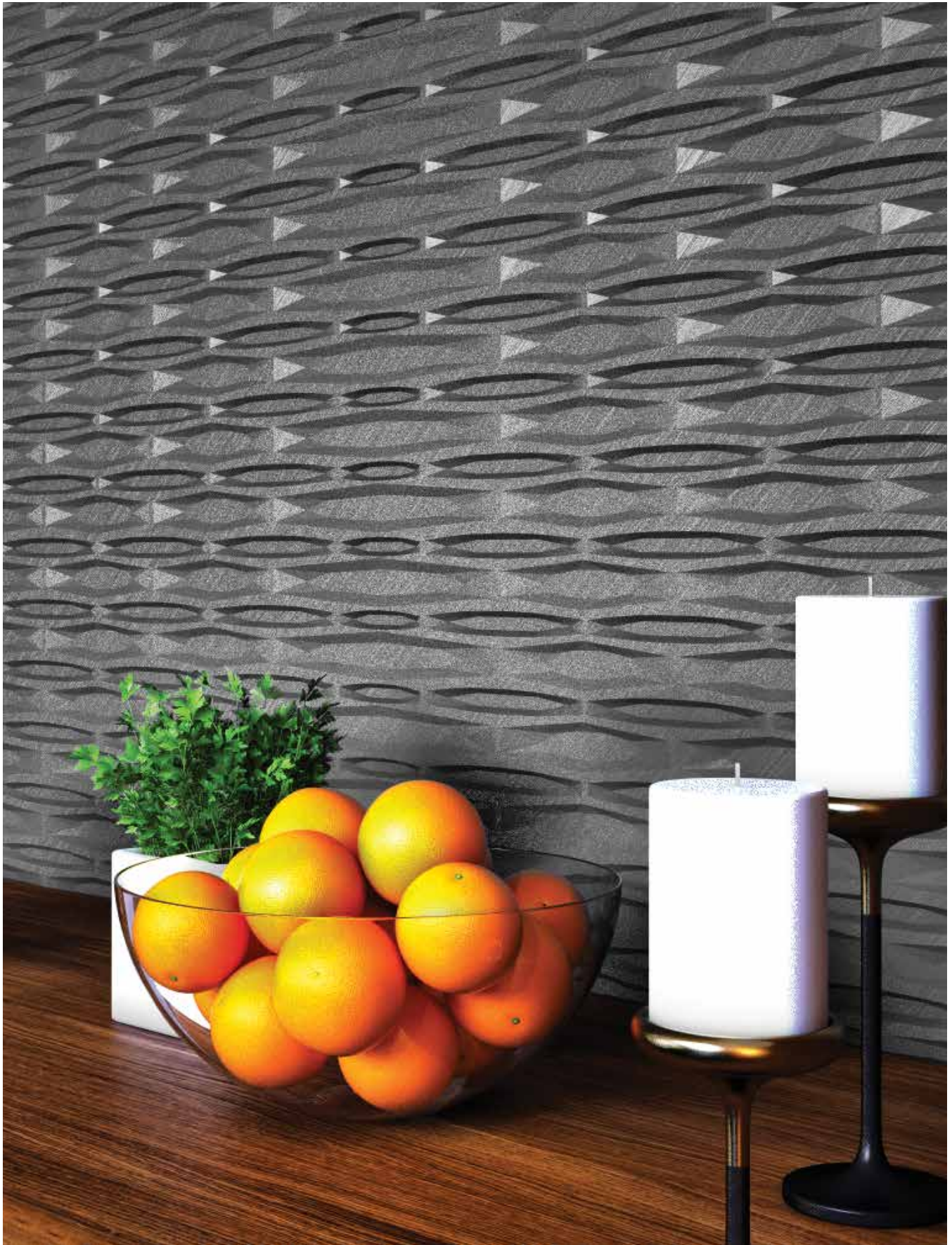
- Thousands of designs and color combinations are available, while our custom program allows for endless design opportunities.
- Fabrication and installation of Dimension Walls is easy.
- Scratch and stain resistant film is added on many Dimension Walls finishes.
- Lightweight and flexible. Sheets can be rolled for shipment or used on curved walls or columns.
- Fire Rated. Dimension Walls meets the ASTM E-84 Class A fire rating.
- Durability. High impact, chemical and stain resistant.
- Paintable. Create your own custom color with our paintable finish.
- Custom designs. Looking for your own design or logo? Let our MDC sales representative help you create a design for your next project.
- Unlimited flexibility. Combine any pattern with any of the 46 standard finishes to create a solution that meets your design needs.
- Made with pride in the USA in an ISO certified facility.
- Consult with your local sales representative with specific questions, technical requirements or project needs.



MEADOWS / BRUSHED NICKEL



ADIRONDACK / BRUSHED ALUMINUM



HAMMERTIME / BRUSHED STAINLESS





RIBFEST / RUBBED BRONZE



HONEYCOMB / COPPER



HOMESLICE / ANTIQUE BRONZE





MACKENZIE / AGED BRONZE



GALLATIN / CHERRY

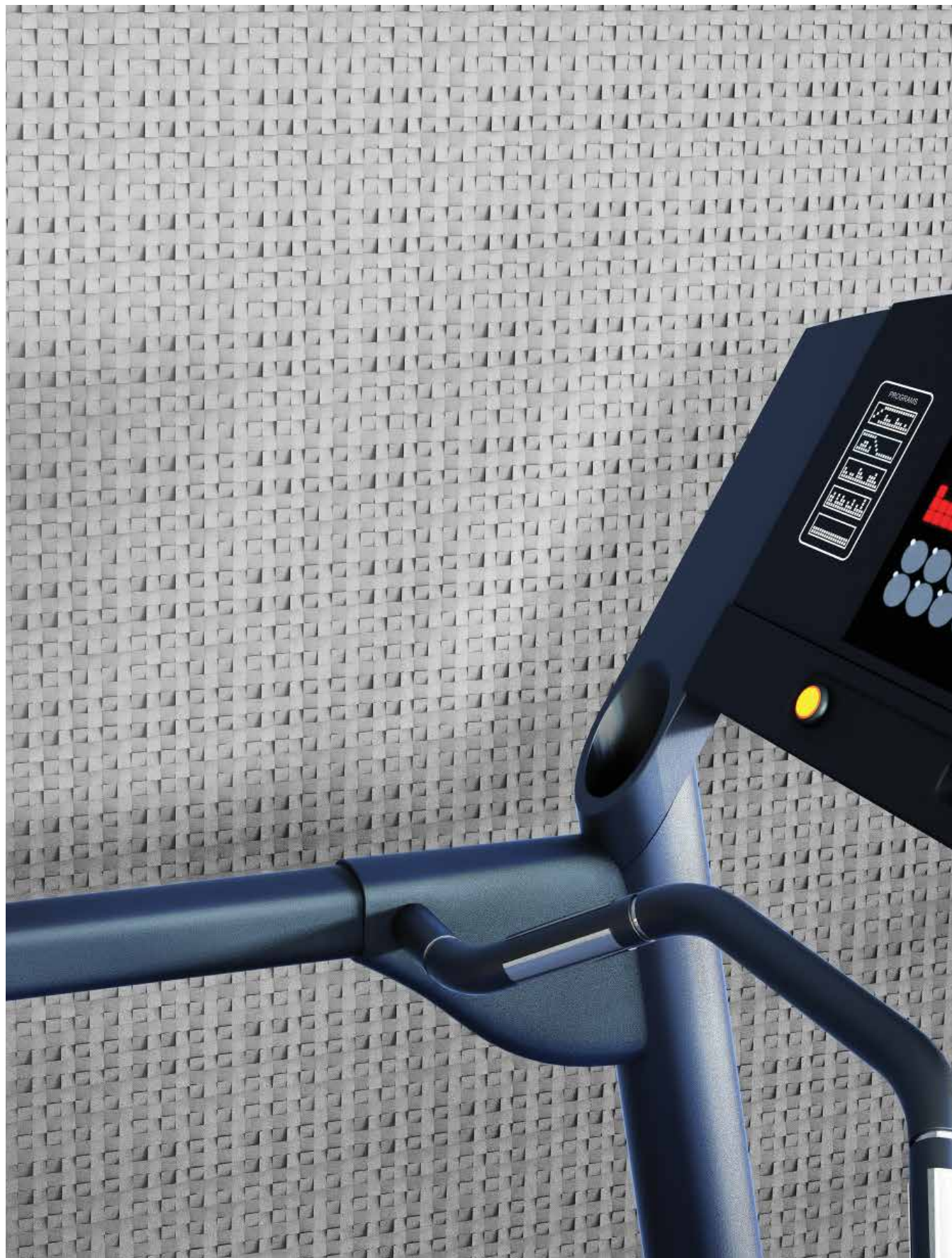


ALEUTIAN / COPPER

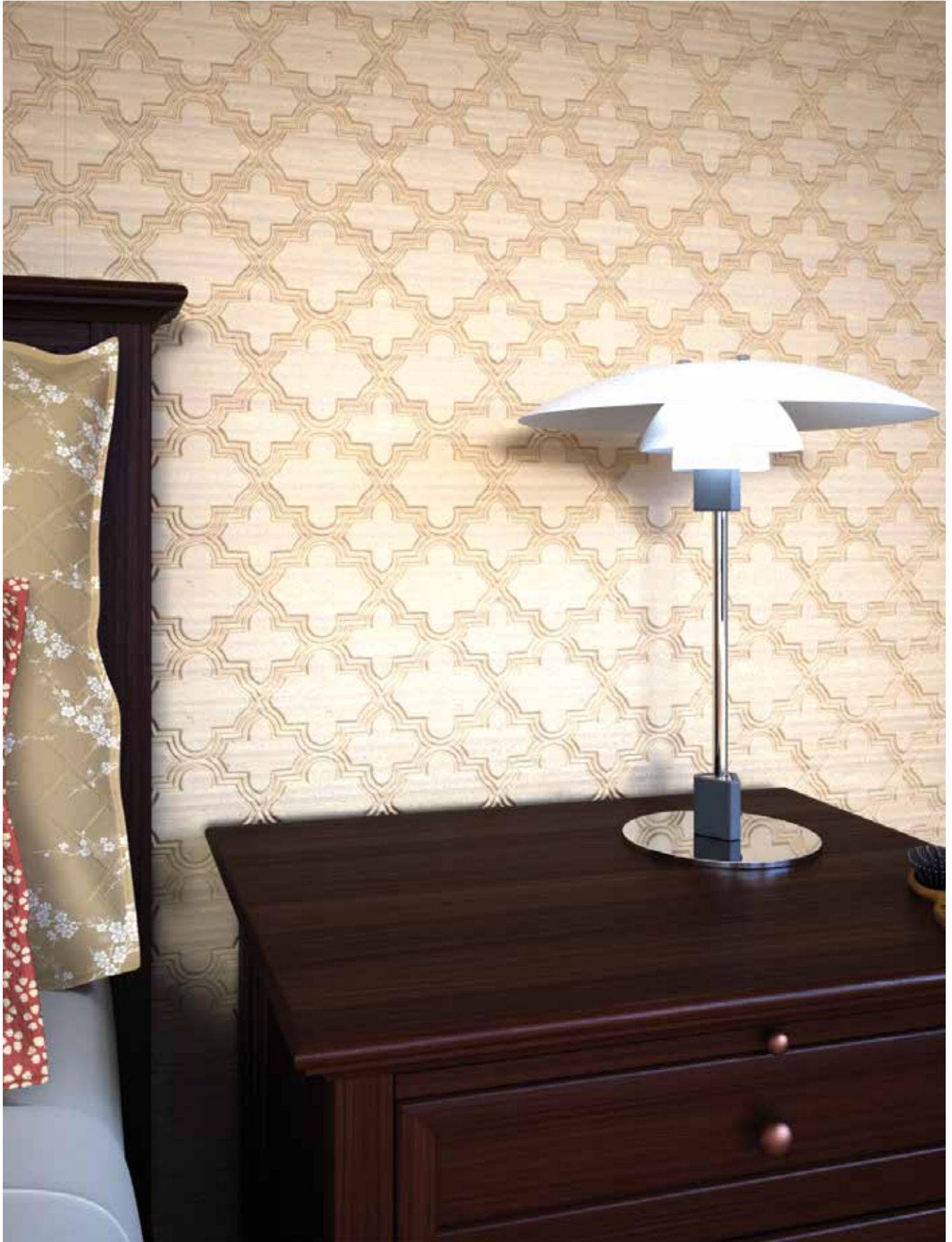


TETON / BRUSHED ALUMINUM



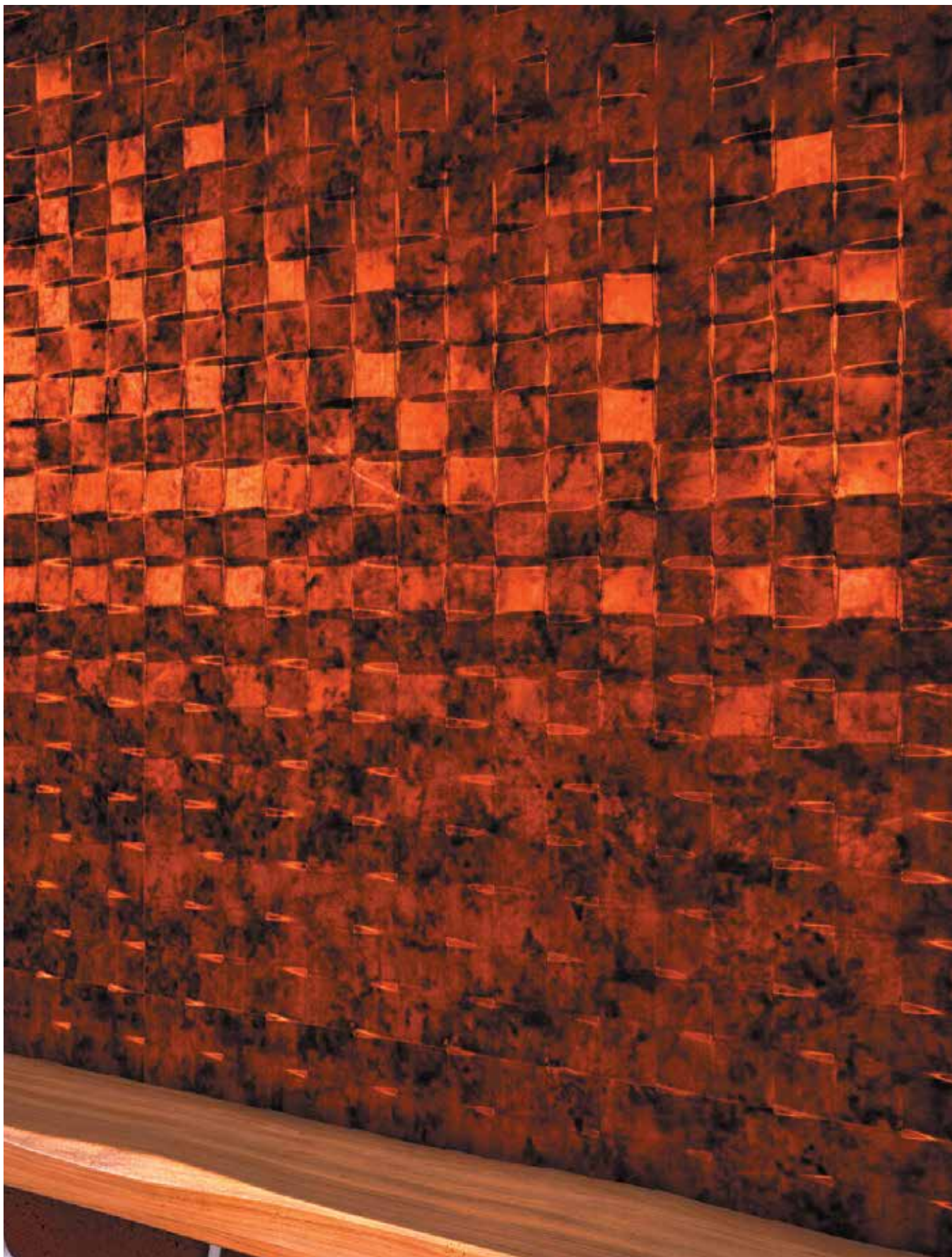


MINI METRO / SILVER



OH GEE! / LIGHT OAK



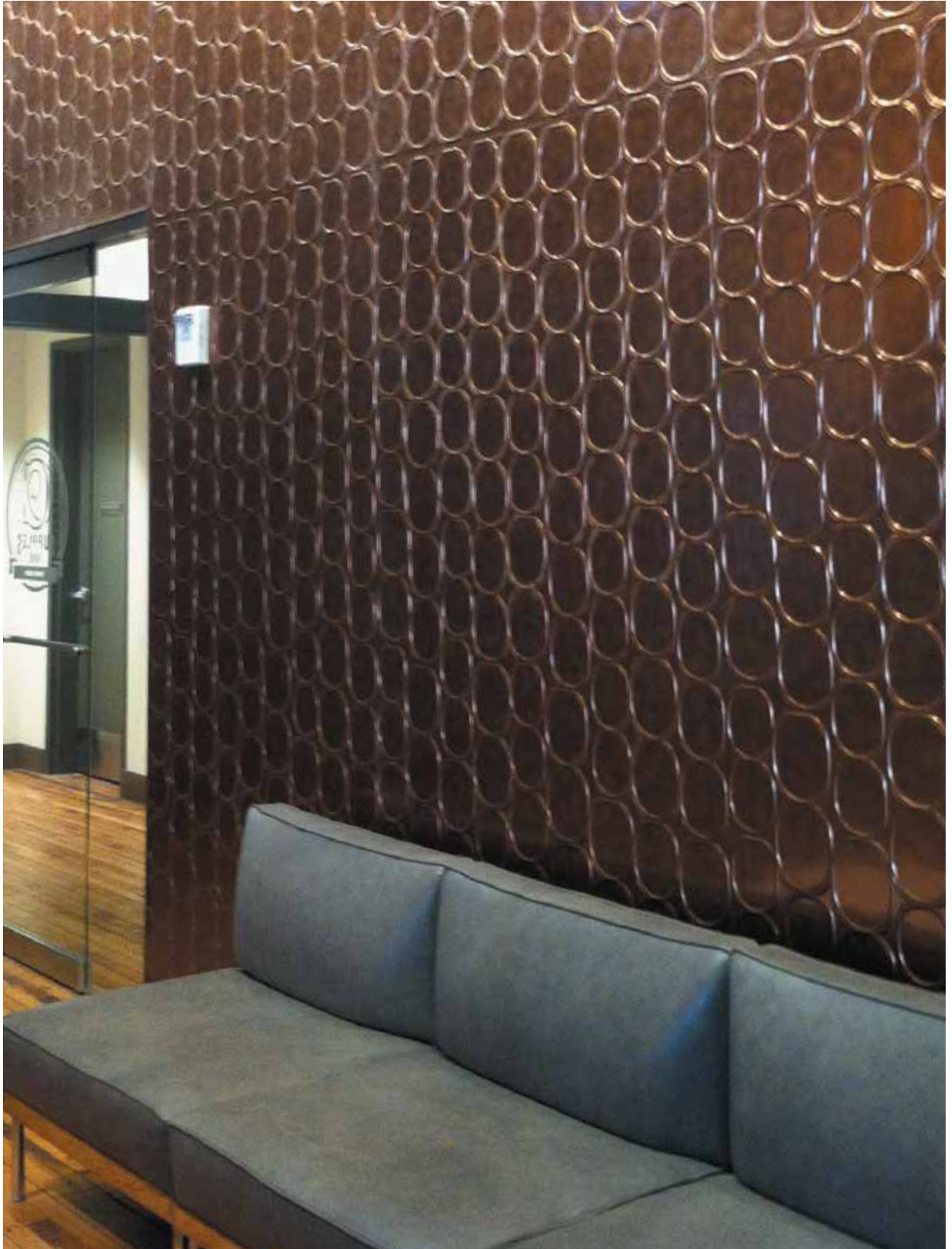


EXPANDED METRO / MOONSTONE COPPER



LINGUAL / WHITE - PAINTABLE





ELLIPTICAL / AGED GOLD

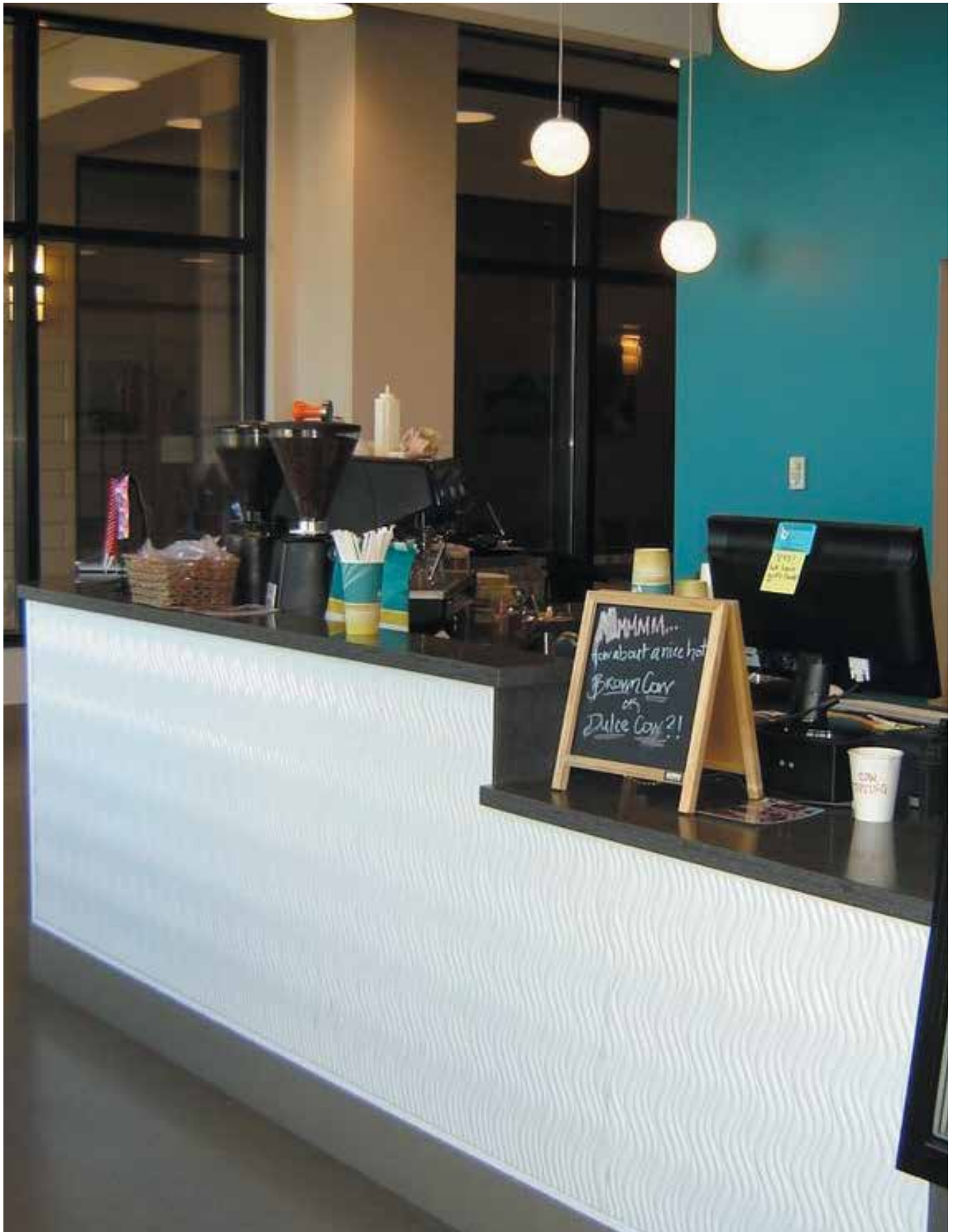




PAINTABLE FINISHES / CREATE CUSTOM PAINTABLE FINISHES WITH ANY PATTERN.

Wi-Tronix LLC, Bolingbrook, IL, Jake Clary – Photographer d+k Chicago, IL – Architects and Designers





SONIC / WHITE - PAINTABLE

# PANEL DESIGNS



High-Traffic  
Pattern

Indicates low-profile panels  
for areas of high-traffic

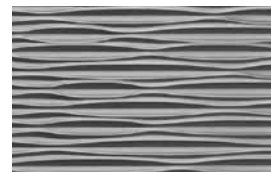
Our inspiring array of panel designs ranges from abstract to geometric to whimsical.

With Dimension Walls you can design inspiring spaces with great ease. These 3-dimensional wall panels offer the opportunity to transform a space in a truly innovative, completely unique way.

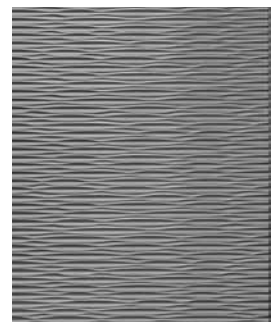
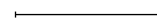
Whether a contemporary or more traditional design is required, the design and finish combination that Dimension Walls offers will suit most needs.

Most panels also feature the BIO (Built In Overlap), a unique seam system that makes installation easy and creates less visible seams.

ENLARGED  
PANEL



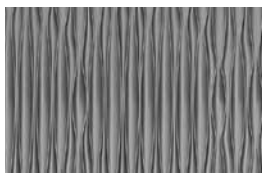
PANEL  
OVERVIEW



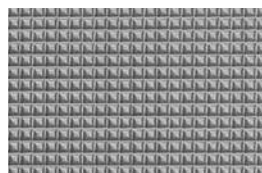
PANEL NAME



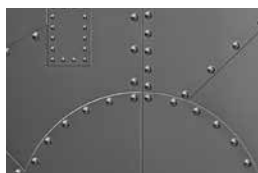
ADIRONDACK



ADIRONDACK  
VERTICAL



ALEUTIAN

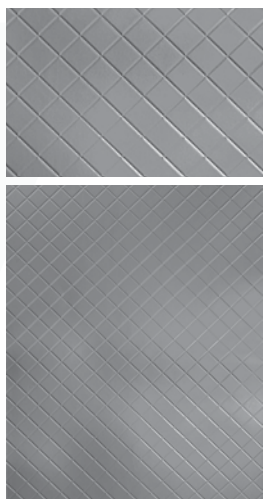


ALLOY

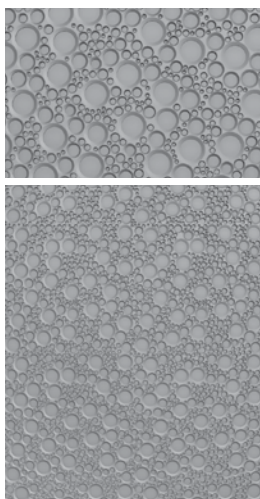


BLOSSOM

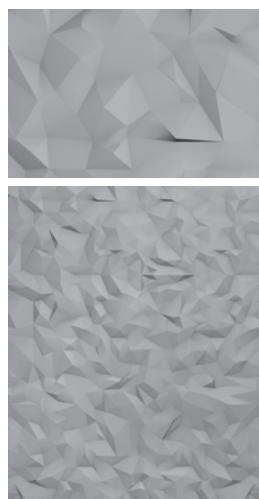




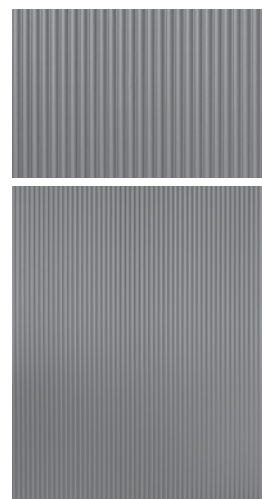
CERAMIC SIMPLICITY



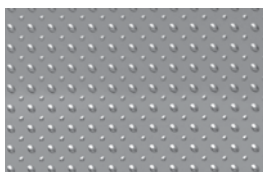
CIRCLE OF COOL



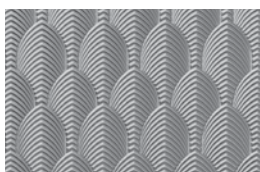
CRACK ME UP



CURTAIN CALL



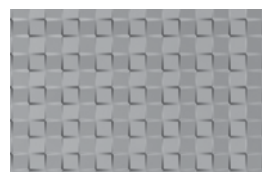
DROPLET



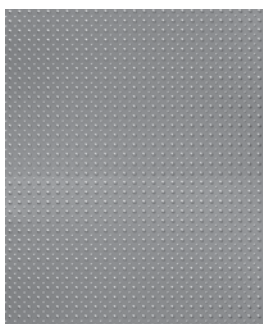
DUBAI



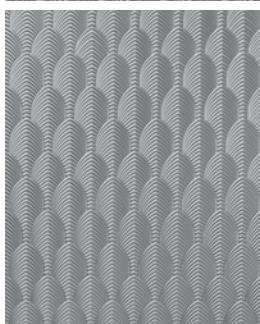
ELLIPTICAL



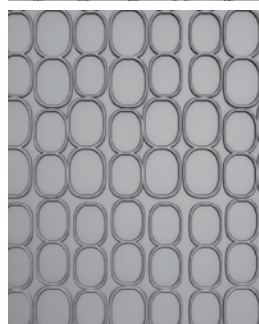
EXPANDED METRO



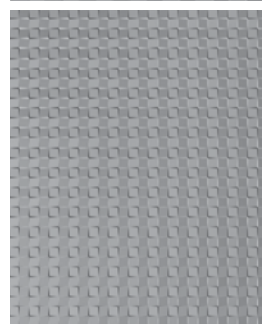
FACETED



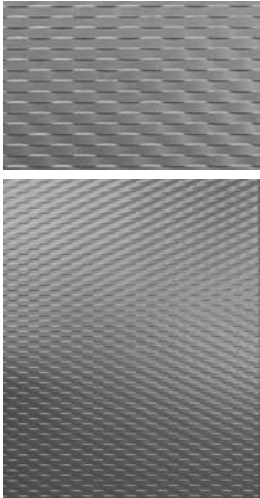
FIRESIDE



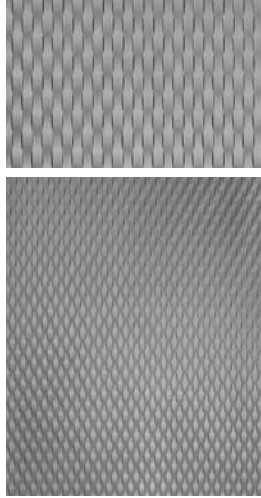
FLORAL VINE



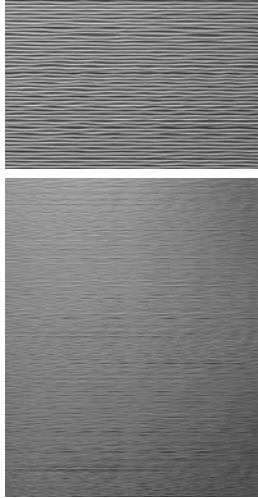
FORE



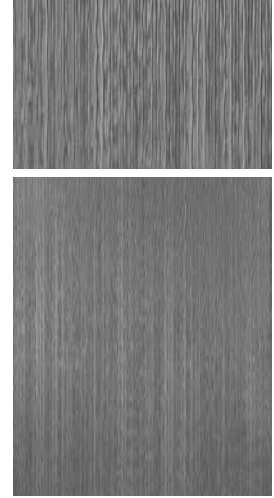
GALLATIN



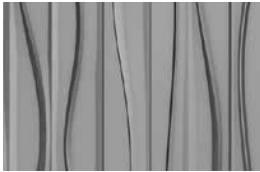
GALLATIN VERTICAL



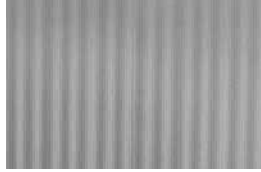
GANGES



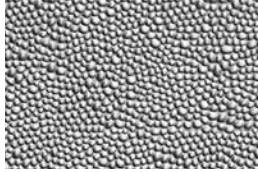
GANGES VERTICAL



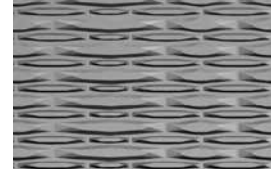
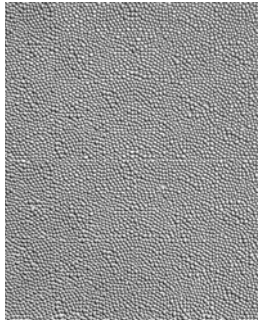
GROOVY



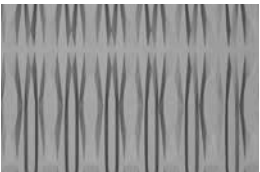
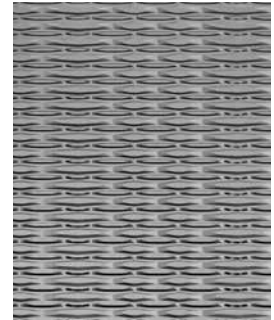
HALFPIPE



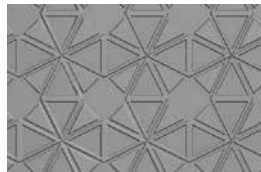
HAMMERED



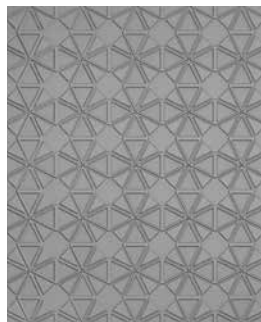
HAMMERTIME



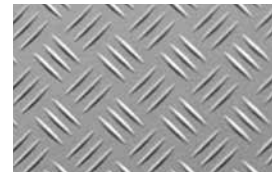
HAMMERTIME  
VERTICAL



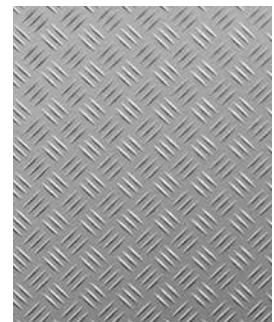
HOMESLICE



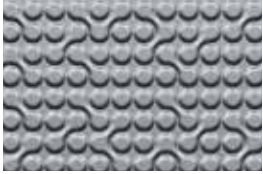
HONEYCOMB



HURLEY



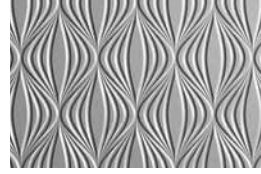




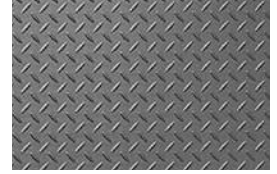
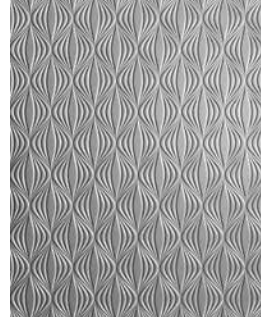
INFINITE



INTERLOCK



KANDRA



KENAI



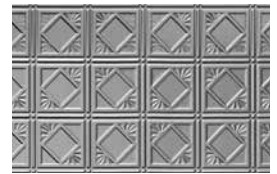
LINE THEM UP



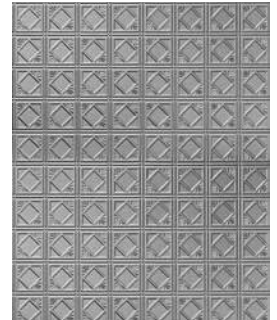
LINE THEM UP  
VERTICAL



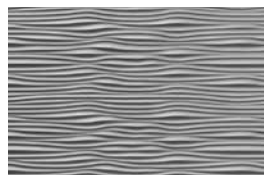
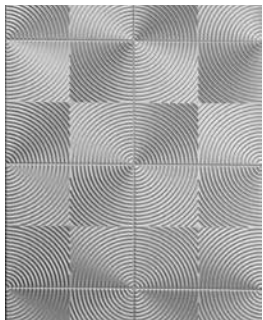
LINGUAL



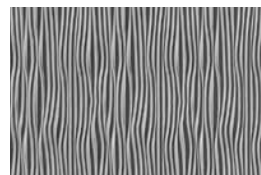
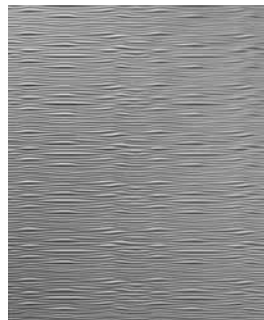
LOOK THIS WAY



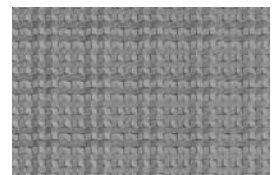
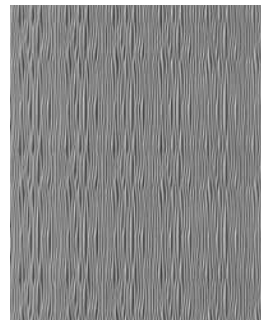
MACKENZIE



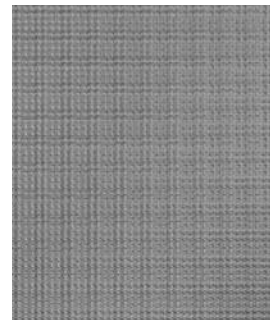
MEADOWS



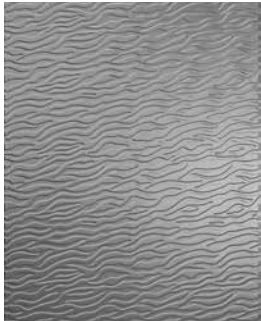
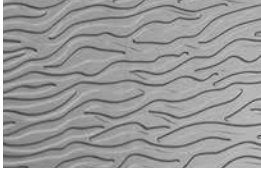
MEADOWS VERTICAL



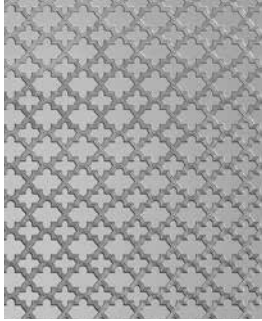
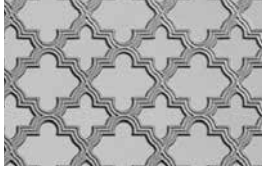
MINI METRO







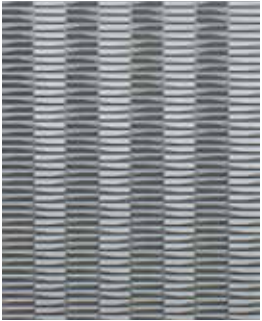
NEMO



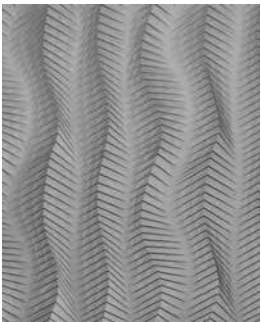
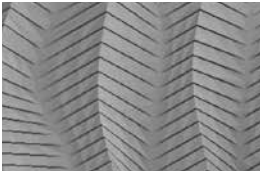
OH GEE!



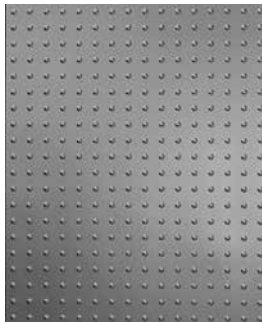
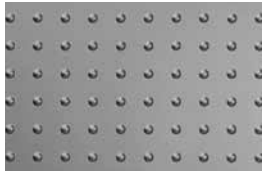
PRESS PLAY



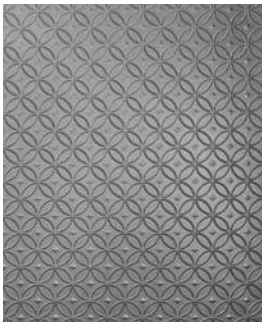
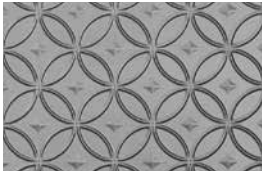
RAPPEL



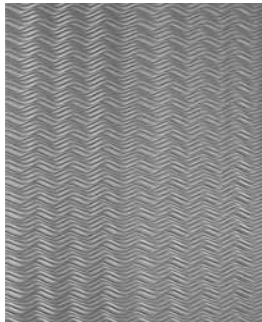
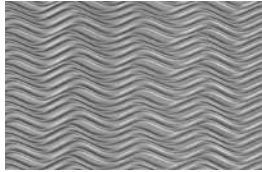
RIBFEST VERTICAL



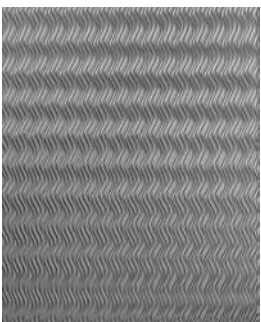
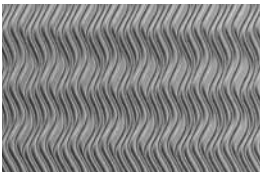
RIVET



STELLAR



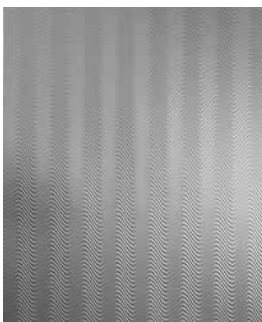
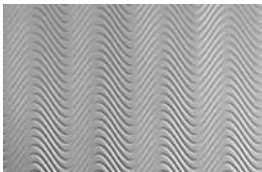
SIERRA



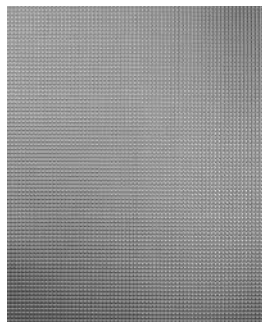
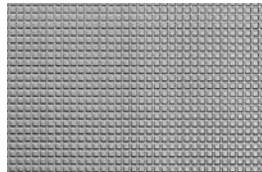
SIERRA VERTICAL



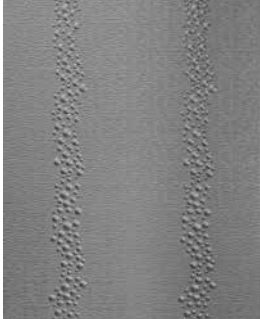
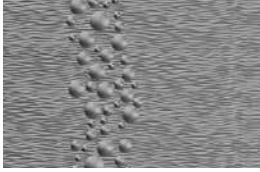
SMALL HAMMERED !



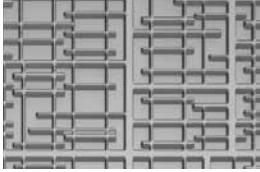
SONIC !



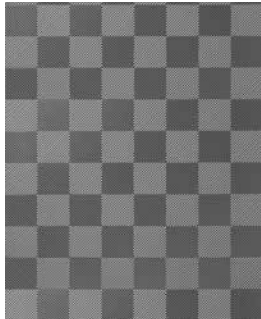
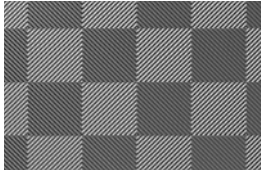
STITCH



SURF



TECHNO



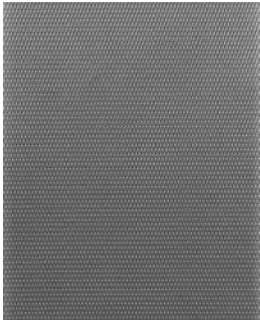
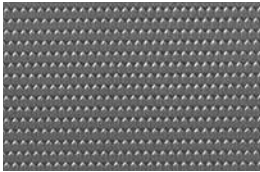
TETON



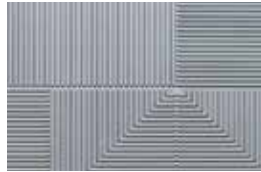
THISTLE



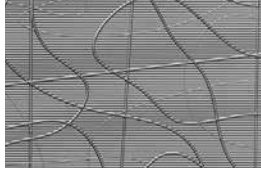
TOO HIP TO BE  
SQUARE



TREAD



WAYFIND



WIRED



# FINISHES



40 standard finishes available on all Dimension Walls patterns or also available as flat sheets.

Custom colors available.

Color throughout finishes are available for high traffic areas.

Scratch and stain resistant film added. Available on noted finishes.

Matching trim is available for noted finishes.

Eco finish is made with 40% post-consumer recycled content.



METALLIC GOLD



METALLIC SILVER



CARBON BRUSHSTROKE



SILVER CROSSHATCH



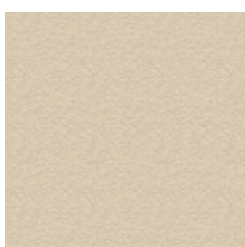
BRONZE



SILVER



OFF WHITE



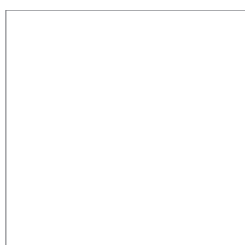
ECO BEIGE



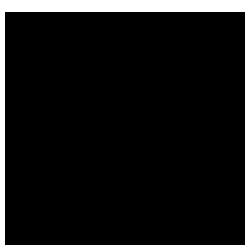
ALMOND



CRACKLE PATINA



WHITE/  
PAINTABLE



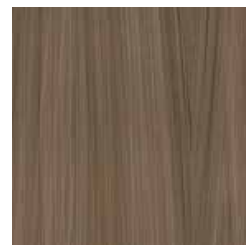
MATTE BLACK



STRIATED EBONY



POLISHED EBONY



BURNISHED  
BRUSHSTROKE



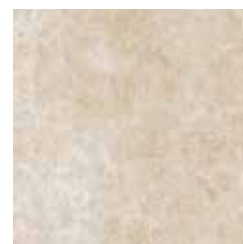
ANTIQUE  
BRONZE



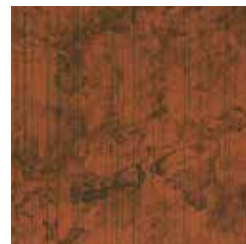
BRONZE PATINA



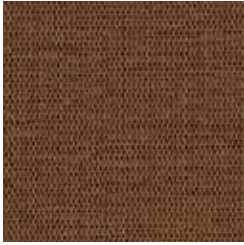
COPPER  
PATINA



MARBLE



MOONSTONE  
COPPER



LINEN  
CHESTNUT



LINEN ECRU



BRUSHED  
ALUMINUM



BRUSHED  
NICKEL



BRUSHED STAINLESS



NEW PENNY



RUBBED  
BRONZE



BURGUNDY GRAIN



CHERRY



LIGHT OAK



MAPLE



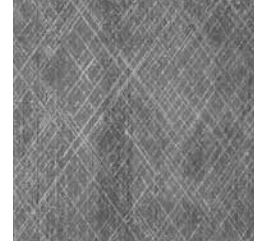
PEARWOOD



STAINED ASH



WALNUT



ETCHED  
SILVER



GALVANIZED



GUNMETAL



AGED  
BRONZE



AGED  
COPPER



AGED  
GOLD







SIERRA / METALLIC SILVER

# CUSTOM DESIGN

With Dimension Walls Custom Program, designs are limited only by your imagination. Our Custom Program allows customers to create or design something unique; or to incorporate their company branding/logo onto a Dimension Walls texture.

MDC can design custom solutions for hotels, restaurants, fitness centers, corporations, hospitals, healthcare institutions, boutiques, retail stores or anywhere you want to create your own image.

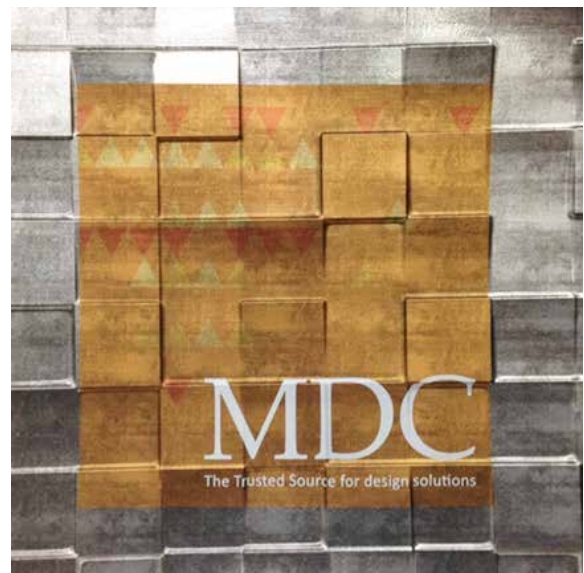
For your *textured ceilings solutions* please see our **"Dimensions Ceilings Textured Decorative Ceiling Tiles"** offering by visiting [mdcwall.com/dimensionceiling](http://mdcwall.com/dimensionceiling).

Contact a MDC sales representative to discuss your vision and have a custom design created for your next project.

---

## DIGITAL PRINTING

Digital printing allows for your logo or image to be printed on most Dimension Walls. This creates a distinct customized look to the rich textured patterns.



CUSTOM ART / TOO HIP TO BE SQUARE



# PROJECT PROFILE

**PROJECT:**

COLTIVARE RESTAURANT AND CULINARY CENTER, ITHACA, NY

**DESIGN BY:**

Ramsgard Architectural Design, Skaneateles, NY

**OBJECTIVE/SCOPE:**

To create a feature wall of industrial tire treads that have both dimension and variation. In addition, could be installed on an inverse curved wall.

**LEAD-TIME:**

8 weeks from the initial design to delivery

**SOLUTION:**

Well within their budget and lead time MDC aided the design of a custom tire tread pattern manufactured onto 2' x 4' panels that allowed reverse hang application. This enabled the finished product to have a varied layout with different tread styles within the panels. The matte black finish selected by the architect was further enhanced by a local faux finish artist, adding the final touches to this unique installation.



CUSTOM DESIGN / ECO BLACK

# QUICK REFERENCE GUIDE

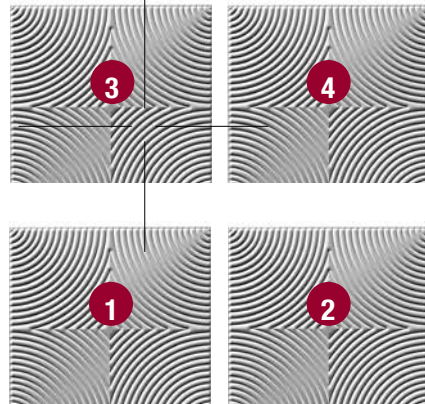
## DESIGNS: 4' X 8' PANELS

PATTERN	EDGE OVERLAP	AVAILABLE IN 4' X 10'	PATTERN	EDGE OVERLAP	AVAILABLE IN 4' X 10'
ADIRONDACK	•	•	LARGE HAMMERED	•	•
ADIRONDACK VERTICAL	•	•	LINE THEM UP	•	•
ALEUTIAN	•	•	LINE THEM UP VERTICAL	•	•
ALLOY	•		LINGUAL	•	•
BLOSSOM	•		LOOK THIS WAY	•	•
CERAMIC SIMPLICITY	•		MACKENZIE	•	•
CIRCLE OF COOL	•		MEADOWS	•	•
CRACK ME UP	•	•	MEADOWS VERTICAL	•	•
CROSS STITCH	•	•	MINI METRO	•	•
CURTAIN CALL	•	•	NEMO	•	
DROPLET			OH GEE!	•	•
DUBAI	•	•	PRESS PLAY	•	•
ELLIPTICAL	•	•	RAPPEL	•	•
EXPANDED METRO	•	•	RIBFEST	•	•
FACETED	•	•	RIBFEST VERTICAL	•	•
FIRESIDE	•	•	RIVET		
FLORAL VINE	•		SIERRA	•	•
FORE	•	•	SIERRA VERTICAL	•	•
GALLATIN	•	•	SMALL HAMMERED	•	•
GALLATIN VERTICAL	•	•	SONIC	•	•
GANGES	•	•	STELLAR	•	
GANGES VERTICAL	•	•	STITCH	•	
GROOVY	•	•	SURF	•	•
HALF PIPE	•	•	TECHNO	•	•
HAMMERED	•	•	TETON	•	•
HAMMERTIME	•	•	THISTLE	•	
HAMMERTIME VERTICAL	•	•	TOO HIP TO BE SQUARE	•	•
HOMESLICE	•	•	TREAD		
HONEYCOMB	•	•	WAYFIND	•	•
HURLEY		•	WIRED	•	
INFINITE	•	•			
INTERLOCK	•	•			
KANDRA	•	•			
KENAI	•				



### EDGE OVERLAP / BUILT IN OVERLAP (BIO)

Most Dimension Walls feature an Edge Overlap (BIO) on two sides of each panel. This feature minimizes the appearance of seams and makes installation easy with no need for trim or caulk between the panels. Wall panels with the overlap have a flat edge that extends beyond the texture across the top and right side.



High Traffic Patterns – low dimension and solid color.



HURLEY / ECO BLACK



High Traffic  
Finish

# HOW TO ORDER

## **SPECIFY**

Pattern Name  
Color Name  
Size  
Type of Installation  
(Wall, Fixtures, Columns or  
other)

## **NOTE**

Some Dimension Walls  
patterns are available  
in horizontal or vertical  
patterns.

Dimension Walls are  
used for many different  
applications, MasterFormat  
(CSI), numbering will vary.

## **CONDITIONS & WARRANTY**

Inspect all Dimension  
Walls products before  
installing. Dimension Walls  
are intended for interior  
applications. Completely  
test the adhesives and  
methods of installation to  
ensure a quality finished  
result. Any product  
replacements will be  
subject to inspection and  
replaced on an equal basis.  
Slight imperfections and  
color variations can occur  
between different run lots.  
MDC is not responsible for  
installation or other costs  
involved with using our  
products.

## **SAMPLES**

Due to printer, picture,  
renderings, and digital  
screen limitations, patterns  
and finishes shown in this  
catalog may not accurately  
reflect Dimension Walls  
textures and colors.  
Request samples to be  
verified and approved prior  
to specification and final  
application.



# INSTALLATION OVERVIEW

## **STORAGE**

Store flat and acclimate the panel in the same environment for at least 24 hours before installation.

## **CUTTING**

Dimension Walls can be easily cut using scissors or a utility knife.

## **ADHESIVES**

Different adhesives and application techniques can be used to apply Dimension Walls. Please see MDC's technical information on our website ([mdcwall.com](http://mdcwall.com)).

## **PAINTABLE FINISH**

Use an adhesion promoting primer and apply a commercial grade latex or oil based paint to create any color on the Dimension Walls.

## **EDGE OVERLAP - BIO (BUILT IN OVERLAP)**

Two contiguous sides of each panel have an Edge Overlap (BIO) for overlapping consecutive sheets. This allows for a less visible seam. See diagram on page 33.

## **TRIM MOLDING**

Dimension Walls trim (see page 37), millwork or other commercial trim pieces are available for finishing the panels.

## **CLEANING & CARE**

Clean only with warm, soapy water. Never use abrasive cleaners or anything with harsh chemicals. A high quality auto polish may be used to help protect the finish.

# PRODUCT SPECIFICATIONS

- Content: High Impact Thermoplastic.
- Sheet Size: 4' x 8' Wall Panels - some are available in 4' x 10' (All UPS Shippable).
- Low Profile Seam: 1/2" overlap feature on two sides provides a trim free, low profile seam. (Some Impact patterns may not have the overlap - refer to page 33).
- Thickness: 1/32" (.030) prior to forming. This is a dimensional product actual thickness varies.
- Weight: 8 lbs per 4' x 8' sheet.
- Custom Finishes: Available upon request. Minimums apply.
- Fire Rated: Dimension Walls meets the ASTM E-84 Class A fire rating.
- Abrasion Resistance: Taber ASTM D1044.
  - Patina with Protective Film – 4,700\*
  - Solid Color – 5,000\*
  - Eco – 1,000\*
  - Painting the finish does not have the stain and abrasion resistance properties of the other finishes but it does retain impact resistance.
- Impact Resistance: ASTM D5420 >2 inch lbs per mil of thickness.
- Solvent Resistance: 50 MEK.
- MEK Double Rubs/Crockmeter: Withstands 70 cycles.
- Humidity: 12 hrs 96-100% RH @ 40 degrees Celcius on MDF.
- Heat Resistance: Up to 140 degrees Fahrenheit (60 Celsius).
- UV Stability: Minimum 100 hours.
- ISO Certification: Manufacturing facility is 9001:2000 Certified.
- Made in the USA.
- Installation: Refer to [mdcwall.com](http://mdcwall.com) for complete installation instructions.
- Trim Molding: Molding is available to finish edges where required. See pages 26-28 for specific trim finish availability. Deeper patterns may require an alternate trim.

\*No Sign of Wear



## DIMENSION WALLS TRIM

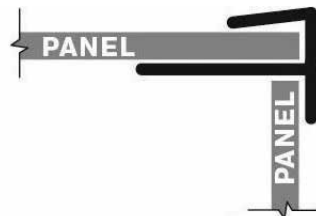
Edge J-Trim, Divider/Joint Trim, and Inside and Outside Corner Trims are available in 8' lengths and can be easily cut to size. Deeper patterns may require an alternate trim. Dimension Walls can also be finished with other aluminum, metal, or wood trim.



**JST4501-4540**  
Divider/Joint Trim  
Length: 8'



**ICT1501-1540**  
Inside Corner Trim  
Length: 8'



**OCT2501-1540**  
Outside Corner Trim  
Length: 8'



**EJT3501-3540**  
Edge J-Trim  
Length: 8'

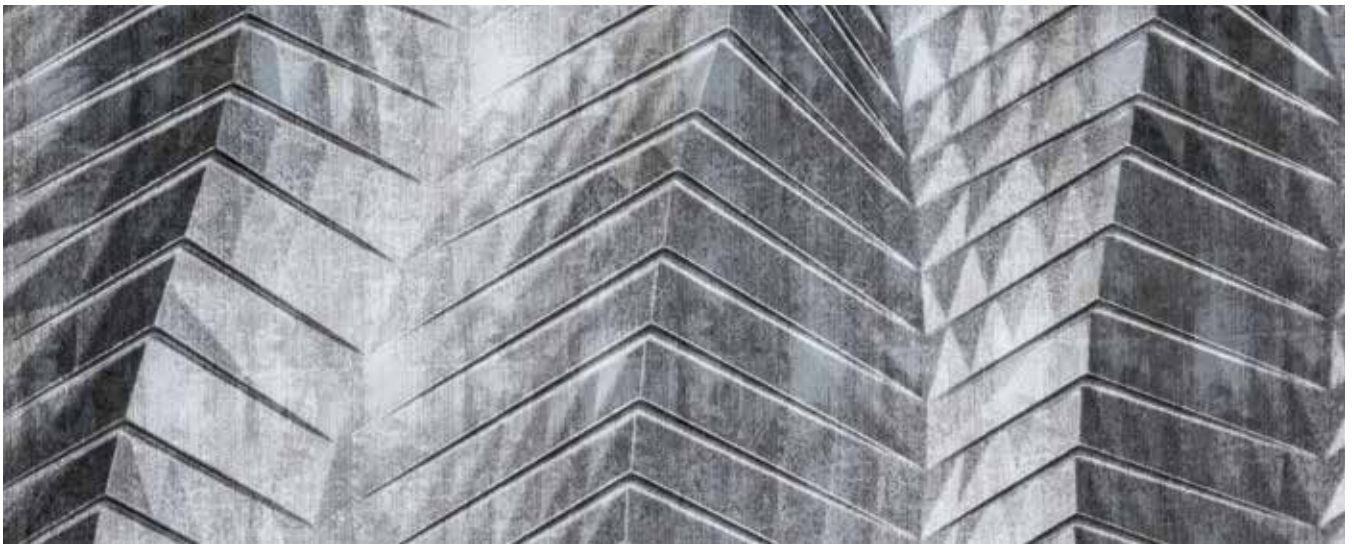


PILLAR - PYRAMID / ETCHED SILVER  
BACK WALL - HONEYCOMB / NEW PENNY





CRACK ME UP / GALVANIZED



RIBFEST / GALVANIZED



EXPANDED METRO / GALVANIZED

# MDC

INTERIOR SOLUTIONS

## DIMENSION WALLS

MDC

400 High Grove Blvd.  
Glendale Heights, IL 60139

TEL: 800.621.4006

TEL: 847.437.4000

FAX: 847.437.4017

[mdcwall.com/dimensionwall](http://mdcwall.com/dimensionwall)