

# MDC

INTERIOR SOLUTIONS

## EDUCATION DESIGN SOLUTIONS

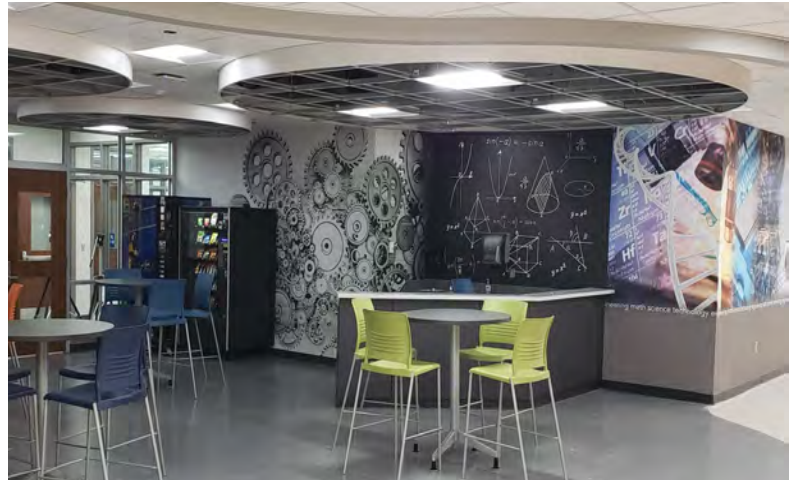


## BEST IN CLASS

Creating spaces for learning that foster creativity, improve focus, and enhance the learning experience while exceeding health and safety requirements

t: 847-437-4000 | [mdcwall.com](http://mdcwall.com)

# INSPIRING ENVIRONMENTS



MDC understands the importance of creating a learning environment that inspires both students and faculty. Studies have proven that the selections of certain interior finishes can accelerate the learning process.

Interior designers in this field realize the right colors and patterns have the ability to deinstitutionalize educational facilities and balance their design concepts with the unique functional requirements of these environments.



# ZINTRA ACOUSTIC



# ZINTRA ACOUSTIC

Noise has detrimental effects upon students' performance at school, including reduced memory, motivation, and reading ability. These distractions are known to cause annoyance, irritation and fatigue. Reducing noise fosters learning and creativity.

Zintra Acoustic Solutions offer a variety of design options that provide exceptional noise reduction without compromising design aesthetics.

## Zintra Acoustic Attributes



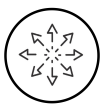
**Noise Reduction**  
Acoustic NRC ratings of 0.45 - 0.95



**Safety**  
Disinfect with 10% bleach / 90% water solution in accordance with the recommendations of the CDC



**Low VOCs**  
Indoor Air Quality provides improved environments for learning



**Versatile**  
Wide array of wall, ceiling, and social distancing solutions



**Repellency**  
100% Polyester. Zintra does not absorb any moisture or odors.



# SOCIAL DISTANCING

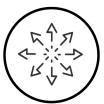


# SOCIAL DISTANCING

Add a safe division to educational spaces with our selection of social distancing options - ranging from benching units, desk dividers, sliding screens, and freestanding units.

Each available in a series of colors, shapes, and sizes, these acoustic dividers offer students an elevated sense of separation and privacy. For added safety, each of these space dividing solutions meets CDC requirements for disinfecting in educational facilities.

## Social Distancing Attributes



### Versatile

Easy to reconfigure, these acoustic systems provide division of space



### Toolless Assembly

Engineered for ease of assembly on-site, without any tools



### Noise Reduction

Acoustic NRC ratings of 0.65 - 0.95



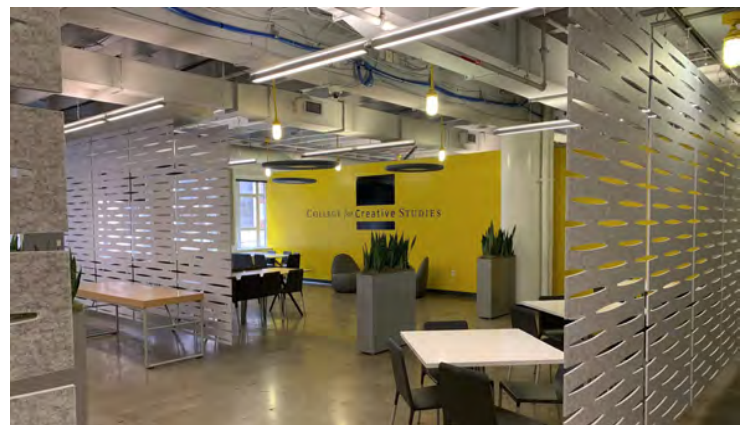
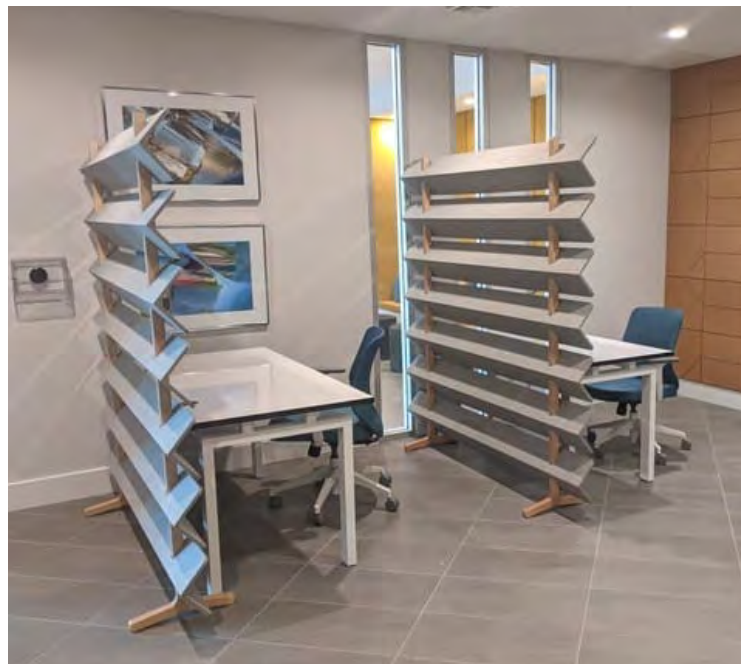
### Safety

Disinfect with 10% bleach / 90% water solution in accordance with the CDC



### Low VOCs

Indoor Air Quality provides improved environments for learning.



# DIGITAL STUDIO



# DIGITAL STUDIO

Designers looking to transform spaces and provide a creative environment need to look no further than MDC digital design solutions to inspire and engage students.

Our in house design consultants and cutting-edge fabrication enables you to make your design statement without sacrificing health and safety. Available in a multitude of substrates - MDC Digital Studio can meet your design, performance, and budget needs.

## Digital Studio Attributes



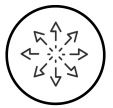
### Aesthetics

Unlimited customization with the most comprehensive suite of digital design capabilities.



### Durability

High impact, chemical and stain resistance with digital FRP.



### Versatile

Wide variety of substrates to provide options throughout the facility.



### Safety

Easy to clean and disinfect with hospital grade cleaners.





# WALL PROTECTION



# WALL PROTECTION

Duratec flexible wall protection has the aesthetics of a wallcovering and the performance features of rigid panels. Duratec is engineered to withstand scuffs, chemicals, and collision impact without showing visible signs of wear and tear. Ideal for use in your highest abuse areas.

## Duratec Wall Protection Attributes

---



### Durability

High impact, chemical, and stain resistance



### Aesthetics

Available in a variety of patterns, textures, and colors, as well as digital selections, so your space will always look as beautiful as it is strong.



### Flexible

Lightweight and flexible, Duratec can be installed on curved surfaces, floor to ceiling walls or railroaded under trim for 60' of seamless wall protection.



### Impact Resistant

Provides the aesthetics of decorative wallcoverings with the strength and durability of rigid sheets.



### Safety

Easy to clean and disinfect with hospital grade cleaners. Meets CDC guidelines for disinfection and sterilization in education spaces.



# WALL PROTECTION

MDC's Fiberglass Reinforced Plastic (FRP) panels are expertly engineered to not only withstand wet environments, but also those environments exposed to higher rates of collision impact. Completely washable, wipeable, and easy to clean & disinfect, our panels promise low maintenance paired with high style.

## Digital FRP Attributes



### Safety

Easy to clean and disinfect with hospital grade cleaners. Meets CDC guidelines for disinfection and sterilization in education spaces.



### Aesthetics

Clear or white FRP sheets with a selection of over 100 existing designs as well as custom capabilities.



### Durability

Extremely durable. Stain, abrasion, and impact resistance make digital FRP the ideal wall protection solution for high traffic areas.



HONEYCOMB



BRICK WALL, PEELING PAINT



UNDULATION ON WOOD



BIRCH



LINEAR REEDS



ANCIENT STONE TILES



LEAVES MODERN BLUE



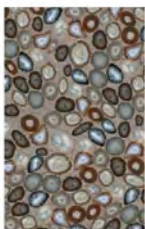
MOUNTAIN SIDING MURAL



CUBISM RUSTED STEEL



SEDONA TILES



GEODE NATURAL



GREEN TWIGS



END GRAIN



GREENERY



BRICK WALL



GINKGO REEDS



STONE HARVEST



HONEYCOMB CARVE, LARGE



# DIMENSION WALLS & CEILINGS



# DIMENSION WALLS & CEILING PANELS

Textured, decorative, impact resistant, wall and ceiling panels add visual interest combined with disinfecting and ease of maintenance within your education space

Dimension Walls panels are available in an endless array of textures and colors. Panels can be applied to flat or curved surfaces, walls, columns, ceilings, and more. Lower-profile textures in solid colors provide maximum durability for high traffic areas.

## Dimension Walls Attributes



### Durability

Impact, chemical, & stain resistant



### Safety

Easy to clean and disinfect with hospital grade cleaners



### Aesthetics

Thousands of combinations of finish, color, and texture



### Flexible

Lightweight and flexible for ease of shipping, handing, and installation



### Impact Resistant

Low profile textures in solid colors can withstand repeated contact and abrasion in heavy traffic areas.



# DRY ERASE



# DRY ERASE GLASS

Modernize Learning Spaces. Glass boards provide a clean, sophisticated take on the standard communication board lending a fresh, current feel to any space.

## Dry Erase Glass Attributes



### Guarantee

Lifetime warranty on the highest performing dry erase surface



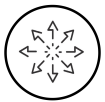
### Durability

MDC Tempered Glass is over four times stronger than traditional glass boards



### Aesthetics

Available in 8 colors across numerous standard board sizes as well as custom sizes and shapes



### Versatile

Steel backing option allows for dual use as a dry erase & magnetic surface



## Standard Color Options



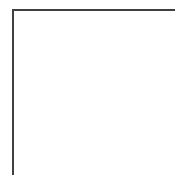
Red



Orange



Yellow



White



Green



Cyan



Blue

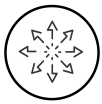


Violet

# DRY ERASE WALLCOVERING

Limitless possibilities for collaborative communication. MDC dry erase wallcoverings install horizontally to cover walls, columns, curved surfaces and more.

## Dry Erase Wallcovering Attributes



### Versatile

Available in standard, low gloss, magnetic and projection dry erase options



### ADA Compliant

Apply floor to ceiling to maximize writing area



### Low VOCs

Low Volatile Organic Compound (VOC) content of less than 100 grams per liter



### Functionality

Smooth, consistent finish is ready to use as a writable surface immediately after installation



### Durability

High quality construction ensures the dry erase surface will not crack, peel, or experience decreased performance over time

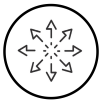




# DRY ERASE PAINT

Convert nearly any surface into a center for creativity and collaboration with FUZE high performance, low VOC, low odor, dry erase paint.

## Dry Erase Paint Attributes



### Versatile

Effortlessly applies over multiple smooth surfaces - walls, columns, chalkboards, wood, metal, and more



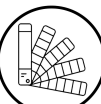
### ADA Compliant

Apply seamlessly from floor to ceiling to maximize writing area at any height



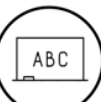
### Low VOCs

Low Volatile Organic Compound (VOC) content of less than 100 grams per liter



### Aesthetics

Available in white as well as a clear finish, suitable for application over colored paint, metal, wood, and more



### Transform

Apply FUZE over existing chalkboards to update surfaces to modern collaboration spaces



# TACKABLE ACCESSORIES

Cork is a truly renewable resource, made from the regenerating bark of the oak tree. The unique qualities of cork make it not only a great tackable surface, but an effective acoustic and decorative wall finish as well.



Sustainable



Recyclable



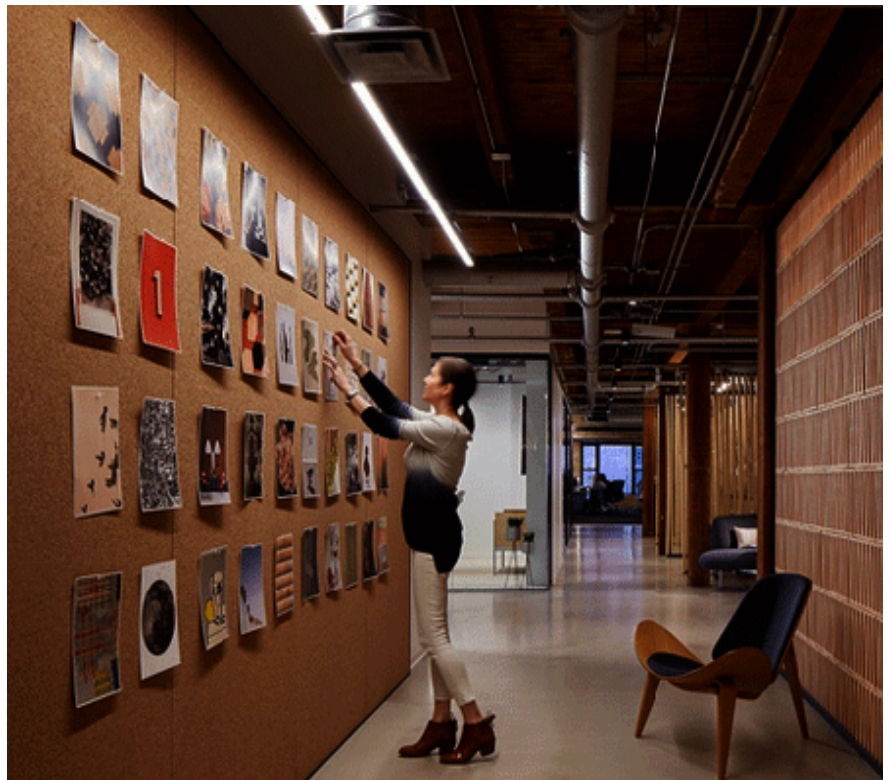
Acoustic Value



Insulation

## Natural Cork Attributes

- 100% natural cork, 1/4" thick
- LEED Compliant MRc6 Rapidly Renewable Material
- LEED Compliant MRc7 FSC Certified
- Biodegradable



# TACKABLE ACCESSORIES

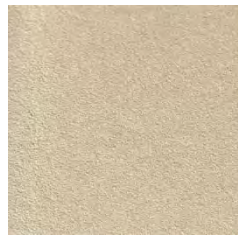
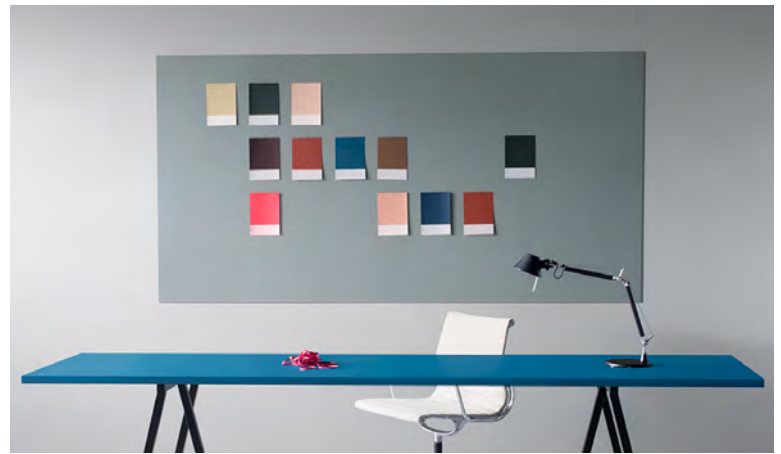
Linoleum Cork Wallcovering is the ideal material for pin boards, notice boards and all other surfaces where ideas and information are exchanged.

## Linoleum Cork Attributes

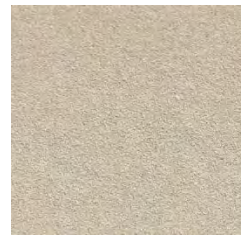
- All natural tackable solutions
- Resilient and flexible
- Hygienic and bacteriostatic
- Long lasting, timeless and strong
- Self Healing
- Natural and renewable raw materials.  
A combination of oxidized linseed oil, rosin

## Specifications

Width:	48"
Thickness:	1/4"
Roll Length:	90 lineal feet (approximate)
Backing:	Jute



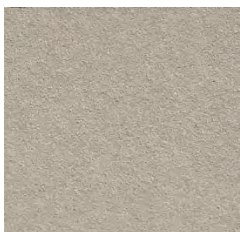
2186 Almond



2187 Brown Rice



2206 Oyster Shell



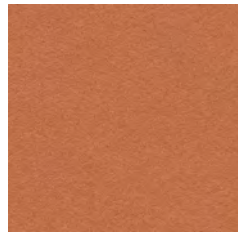
2182 Potato Skin



2208 Mushroom



2166 Nutmeg



2207 Cinnamon



2211 Tangerine



2210 Salsa



2212 Pineapple



2213 Lettuce



2214 Blueberry



2162 Duck Egg



2204 Poppy Seed



2209 Black Olive