

# MDC

INTERIOR SOLUTIONS

## ARCHITECTURAL METALS

BACKED AND UNBACKED  
AUTHENTIC METAL SURFACES





# AUTHENTIC METAL SURFACES DESIGNED WITH BEAUTY AND STRENGTH IN MIND

A collection of real metal surfaces ideal for adorning casework, walls, and more. MDC's Architectural Metals collection is comprised of 4' x 8' sheets of aluminum or copper enhanced through embossing, hand painting, etching, and other innovative techniques.

MDC's Architectural Metals are designed for spaces where durability is paramount. As experts in materials for high traffic environments, MDC ensures that its products not only perform exceptionally but also meet or exceed the rigorous safety and material standards required in commercial spaces. These metal surfaces are ideal for hospitality, healthcare, retail, institutional, and other high traffic spaces.



BRUSHED ALUMINUM RIDGES



### **PREMIUM DURABILITY**

Architectural Metals are engineered to withstand scuffs, cuts, chemical exposures, and impact without showing visible signs of wear and tear.

### **REAL METAL SURFACES**

Constructed from high quality sheets of authentic aluminum and copper.

### **DISTINCTLY UNIQUE**

Features embossed, etched and hand painted treatments to enhance real metal surfaces.



BRUSHED ALUMINUM DIAMOND PLATE





ALUMINUM IN ROSE GOLD







ART METALS FUNKY COLD PATINA - CUSTOM COLOR

[MDC.IS/METALS](https://mdc.is/metals)





TEXTURED ART METALS IN PARCHMENT





# ARCHITECTURAL METALS

ALUMINUM  
COPPER  
HAND PAINTED  
SPECIAL ORDER

[MDC.IS/METALS](https://www.mdc.is/metals)







# HIGH PRESSURE LAMINATES WITH REAL METAL SURFACES

MDC Architectural Metals offer a high-end solution for a variety of applications, including wall panels, reception desks, point-of-purchase (POP) displays, store fixtures, and more. With a wide range of options, your personal MDC Account Executive is ready to assist you in selecting the perfect materials to enhance your space. Let us help you find the best solution for your project!

## ALUMINUM COLLECTION

All aluminum finishes are available in flat sheets or with optional embossed designs. Most finishes are lacquered for added abrasion resistance, while polished options are anodized for a sleek, durable surface.

## COPPER COLLECTION

Copper laminates, featuring select popular embossed designs, are lacquered and come with a clear protective film for easy processing.

## HAND PAINTED COLLECTION

As the name suggests, our Hand Painted Collection is a truly unique work of art, featuring rich colors and materials in each design. Every panel is meticulously hand-painted by skilled artists using techniques that allow for repeatability, while preserving the artistic value and subtle nuances of hand craftsmanship. When using multiple sheets, slight variations will naturally occur, adding to the collection's authenticity. Protected by a high-quality lacquer process for enhanced durability, these laminates are ideal for even the most demanding commercial environments.

## FEATURES

Real Metal Surfaces



Suitable for a Variety of Applications



Phenolic Paper Backed Metals



Counterbalancing Required



Abrasion Resistant



Easy to Clean Surface



Class A Fire Rated





# DESIGN BEYOND THE SURFACE

## HIGH PRESSURE LAMINATES (HPL'S) WITH REAL METAL SURFACES

Available in real aluminum and copper surfaces with a phenolic paper backing. Like other HPLs, counterbalancing is required to prevent warping of the substrate.

## HIGH QUALITY, HANDMADE DESIGNS

MDC's Architectural Metals collection provides designers with exceptional creative flexibility. Whether you're looking for beautifully polished flat panels or an exciting selection of embossed finishes, we have metallic surfaces for every project.

## SUITABLE FOR A VARIETY OF APPLICATIONS

Architectural Metals are ideal for a range of vertical applications, including wall panels, reception desks, store fixtures, point-of-purchase (POP) displays, and more.

## PROTECTIVE COATING FOR DURABLE SURFACES

Our embossed finishes are coated with a proprietary lacquer for superior durability and abrasion resistance, while our polished finishes are anodized to resist tarnishing over time. Additionally, all Architectural Metals come protected with a clear, peel-off masking designed to remain in place during fabrication to prevent any damage while working with the materials.

## LOW MINIMUM ORDER QUANTITIES

Whether you need one sheet for a finishing touch or 100 for your project, we've got you covered. Stocked items are ready to ship within 1-2 weeks.

## SHIPPED TO YOU FROM AN ISO CERTIFIED FACILITY

Our manufacturing facility is ISO Certified which enables us to have the "hands on" control necessary to maintain the highest standards customers expect from us. Metal sheets are thoroughly inspected by our quality control team before any order is shipped.



# ALUMINUM

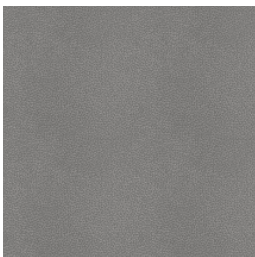
All aluminum finishes are available in flat sheets or with embossed designs added to the finish. Most finishes are lacquered for abrasion resistance. The polished finishes are anodized and will not tarnish.



POLISHED  
ALUMINUM  
904



BRUSHED  
ALUMINUM  
245



NEPTUNE BRUSHED  
ALUMINUM  
924 NEP



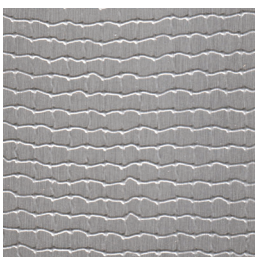
BRUSHED ALUMINUM  
FINE HAMMERED  
924 HAM



CORRUGATED  
BRUSHED ALUMINUM  
603/924



BRUSHED ALUMINUM  
RIDGES  
924 PGQ



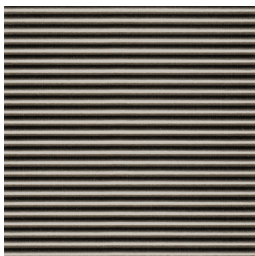
BRUSHED ALUMINUM  
MESH  
924 NTZ



BRUSHED ALUMINUM  
DIAMOND PLATE  
924 GEK



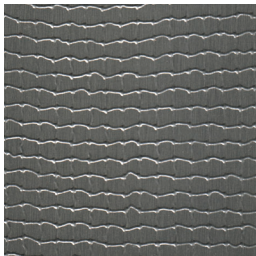
BRUSHED  
STAINLESS  
256G



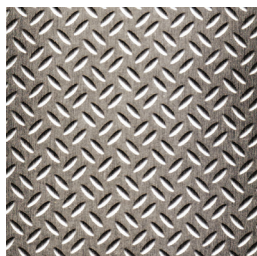
CORRUGATED BRUSHED  
STAINLESS STEEL  
603/256



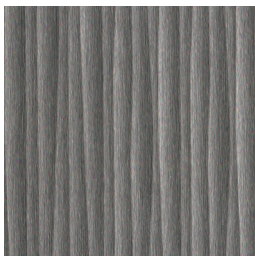
BRUSHED STAINLESS  
RIDGES  
256 PGQ



BRUSHED STAINLESS  
MESH  
256 NTZ



BRUSHED STAINLESS  
DIAMOND PLATE  
256 GEK



BRUSHED STAINLESS  
REEDS  
256 PTK



BRUSHED BRASS  
934



POLISHED  
BRASS  
914





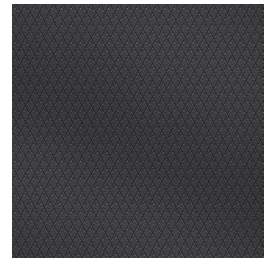
POLISHED  
SMOKE  
1014



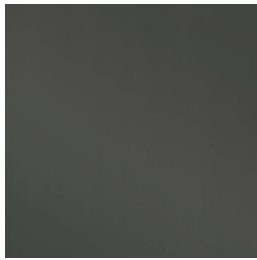
AQUA POLISHED  
SMOKE  
1014 AQA



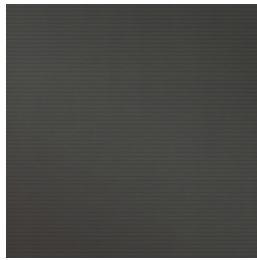
NEPTUNE POLISHED  
SMOKE  
1014 NEP



DIAMOND POLISHED  
SMOKE  
1014 DIA



ALUMINUM GUN  
METAL  
248



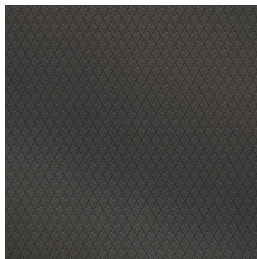
GUN METAL MILL  
603/248



TITAN ALUMINUM  
GUN METAL  
248 BKE



WATERFALL ALUMINUM  
GUN METAL  
248 HM5



DIAMOND MILL  
GUN METAL  
248 DIA



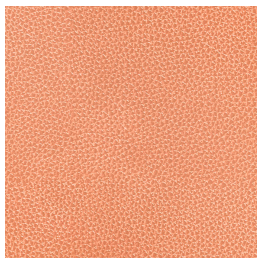
BRUSHED BRONZE  
944



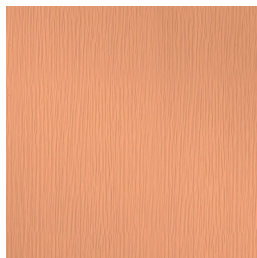
ROSE GOLD  
212



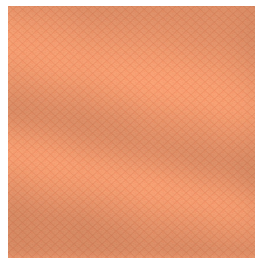
AQUA ROSE GOLD  
212 AQA



NEPTUNE ROSE  
GOLD  
212 NEP



WATERFALL ROSE  
GOLD  
212 HM5

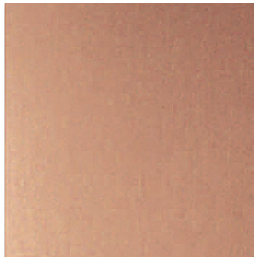


DIAMOND ROSE  
GOLD  
212 DIA



# COPPER

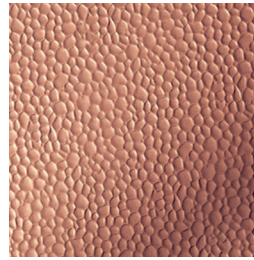
Copper laminates, with selected popular embossed designs, are lacquered and come with clear protective film for ease in processing. Available as flat sheets or with embossed designs.



MATTE COPPER  
C400



FINE HAMMERED  
COPPER  
C471



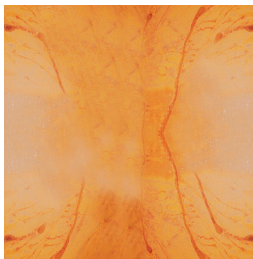
HAMMERED  
COPPER  
C473

# HAND PAINTED

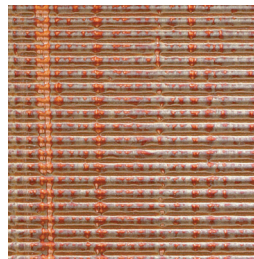
The Hand Painted Collection offers unique, hand-painted copper sheets with rich colors and artistic variations. Each piece is lacquered for durability, perfect for millwork or wall applications.



PATINA AUTUMN  
LEAVES  
C421



PATINA ONYX  
C412



MADRID  
CA5



# ART METALS COLLECTION

MODERN DESIGNS  
COLORFUL PATINAS  
RICH OXIDIZED COPPERS  
EASY TO INSTALL  
UNBACKED METALS







ART METALS CUSTOM DIGITAL PRINT



# MODERN DESIGNS AVAILABLE ON UNBACKED SPECIALITY METALS

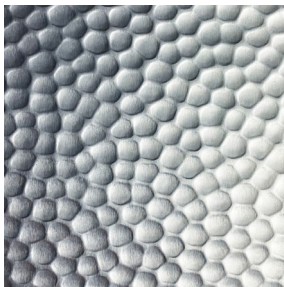
MDC’s Art Metals Collection showcases distinctive digitally printed designs, inspired by the beauty of natural materials. The collection spans vibrant, colorful patinas, rich oxidized coppers, and rare, artistically treated modern metals.

Each 4’ x 8’ unbacked panel is easy to install without the need for counterbalancing and is available in a variety of textured options. The Art Metals Collection offers unique decorative surfacing solutions, perfect for wall art, protective wallcoverings, large-scale murals, wall dividers, and more.

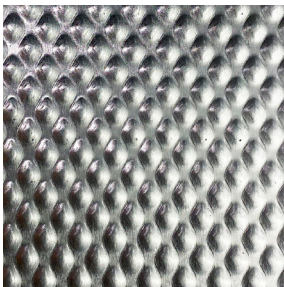
## UNBACKED METAL SUBSTRATES

- Mill Satin (Smooth, “Raw” Aluminum, 4’ x 8’ Sheets) Is the standard finish for digitally printed panels unless a texture is otherwise specified.

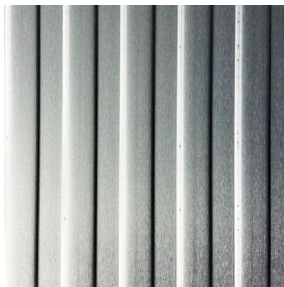
## AVAILABLE TEXTURES



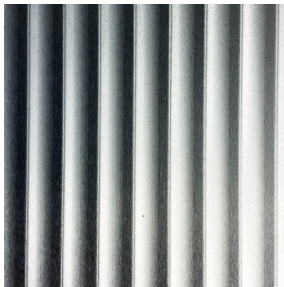
HAMMERED



PISCAN



BENGAL



FLUTED



MONACO



TANNERY

## FEATURES

Real Metal Surfaces



Suitable for a Variety of Applications



Unbacked Aluminum Panel



Direct to Wall Application



Abrasion Resistant



Easy to Clean Surface



Class A Fire Rated









BE INSPIRED: 19 UNIQUE METAL AND  
PATINA-INSPIRED DESIGNS

Represents 4" x 8"  
Panel Size

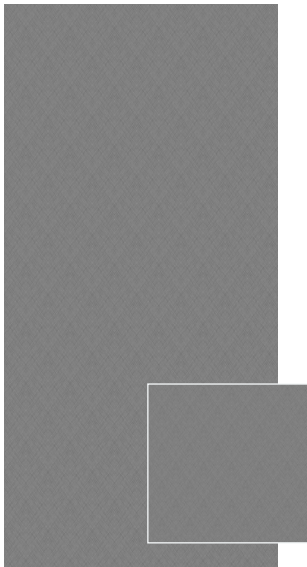


Represents 2" x 2"  
Section

ARCTIC

Pattern Name

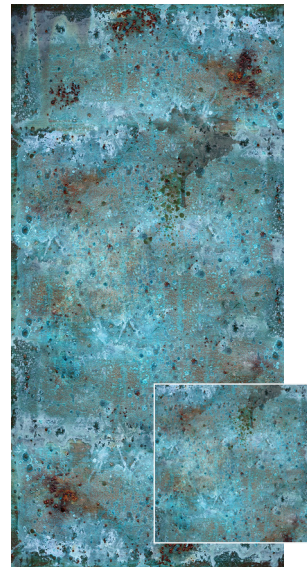




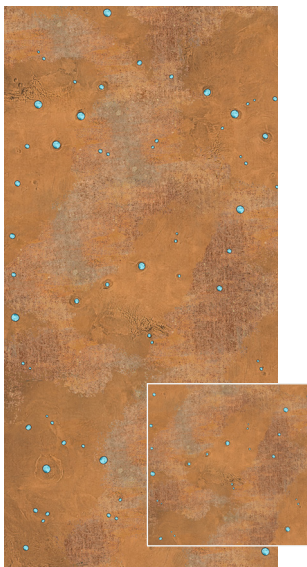
CARATS



CASTLE BLACK



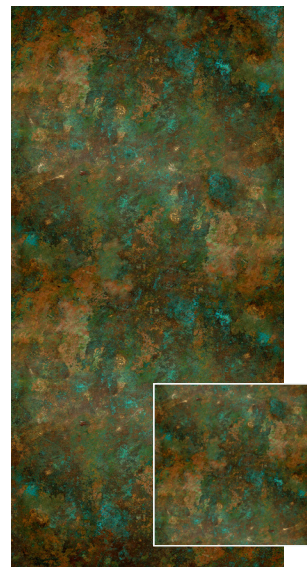
FUNKY COLD PATINA



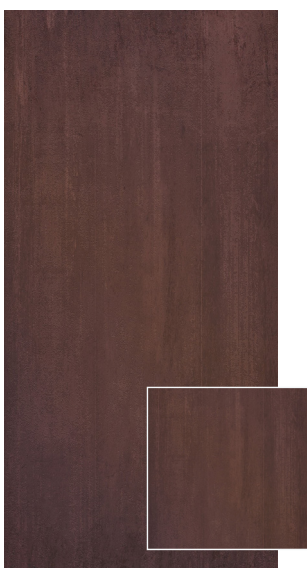
TALISMAN



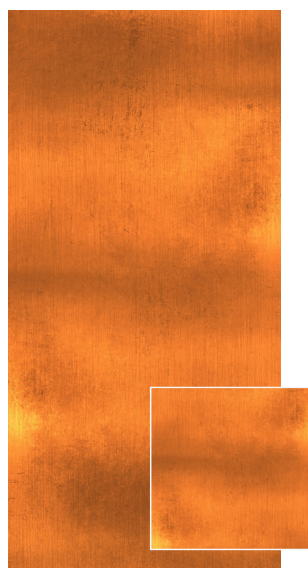
BOURBON STREAK



WICKED



BLACK SANDS

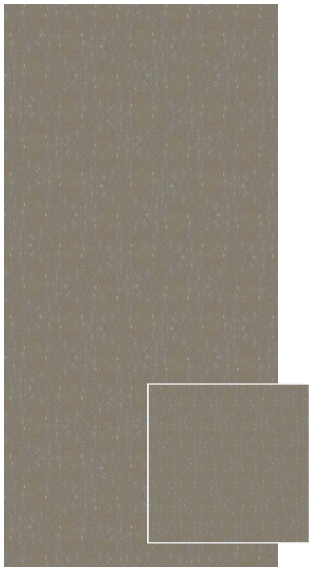


WELCOME BACK COPPER

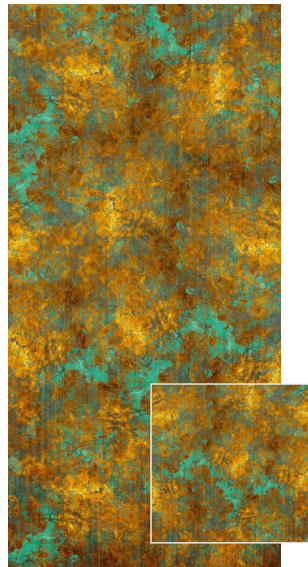


CU LATER





GATSBY



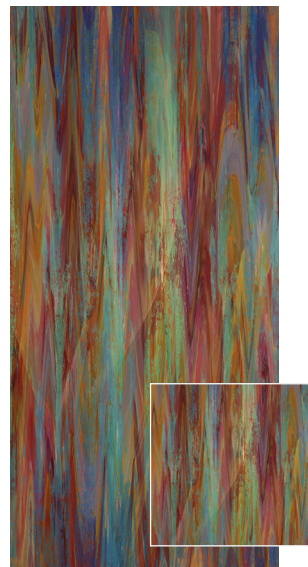
NATIVE PATINA



RAVEN



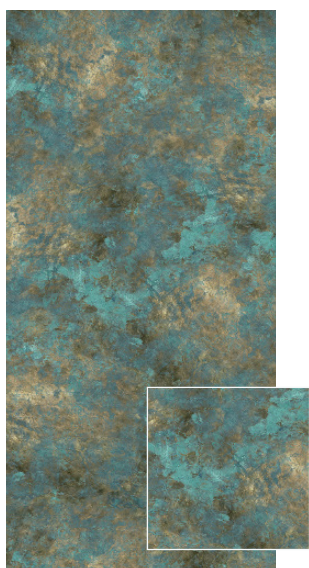
RED RUST



SO IMPRESSED



SUNBURST



ELEMENTAL



OLD STAINLESS



INDUSTRIAL STEEL







# BESPOKE METAL SURFACES UNIQUE TO YOUR PROJECT


Elevate your design projects with our cutting-edge Custom Metals Program, where innovation meets versatility. Imagine transforming your vision into reality with a spectrum of customizable options tailored to your exact specifications.

Our program empowers you to create stunning, one-of-a-kind visual statements that command attention. From bespoke finishes and colors to seamlessly integrated branding elements, our solutions are meticulously crafted to not just meet but exceed your expectations.


Turn every surface into a masterpiece with our digitally printed metals—where your creativity knows no bounds.

## PROGRAM FEATURES

Unique Decorative Surfacing Solutions 

Custom Metallic Finishes 


Custom Color and Designs 


Branding Elements 

Wall Art 

Large-Scale Murals 

Low Minimums 

Short Lead Times 

Made in the USA 









# FREQUENTLY ASKED QUESTIONS (FAQ'S)

You've got questions? We've got answers. MDC is committed to helping you with your Architectural Metals project every step of the way. Please contact your local MDC Account Executive or Customer Care team if you have any questions or to request more information.

## **WHAT SETS MDC ARCHITECTURAL METALS APART FROM OTHER COMPETITIVE METAL LINES?**

The primary distinction of MDC Architectural Metals lies in the extensive variety and specialized focus of our offerings. While many competitors concentrate on standard melamine HPLs, our mill is dedicated exclusively to the metal market. Our phenolic paper-backed HPLs are crafted uniformly and can be fabricated using standard tools. However, the real difference becomes evident when comparing our products to some unbacked metals. These unbacked metals, often lacking a phenolic paper backing, can be more challenging to fabricate and tougher on fabricators' tools.

## **WHAT IS PHENOLIC BACKING?**

A phenolic backing is a durable, heat-resistant layer made from phenolic resin, which is applied to the back of materials like high-pressure laminates (HPLs). This backing provides added strength and stability, making the material more resistant to warping, moisture, and impact. Phenolic backing is especially useful in applications where the material will be exposed to high wear or environmental stress, as it enhances the overall performance and longevity of the product.

## **IS PHENOLIC PAPER BACKED METAL BETTER THAN UNBACKED METAL?**

In many ways, phenolic paper backed metal is superior to unbacked items. The phenolic paper backing helps protect the laminate from being dented and damaged in shipping and fabricating (it does not make the product totally resistant to damage, so the fabricator still needs to take care). Phenolic paper backed metal is also easier on router bits and saw blades, so the fabricator should get more life out of these tools using the phenolic paper backed laminate.

## **WHAT ARE THE DIMENSIONS OF EACH TYPE OF PANEL?**

Each panel measures 4 feet by 8 feet. The standard thickness for most panels is approximately 0.035 inches, except for the Hand Painted and stainless steel options, which are 0.040 inches thick. Polished aluminum surfaces are anodized, while brushed aluminum and copper surfaces are lacquered.

## **HOW ARE MDC ARCHITECTURAL METALS FABRICATED?**

MDC Architectural Metals can be fabricated using the same tools as high-pressure decorative laminates and bonded to standard substrates commonly used in the industry. However, special care is required to prevent surface damage, such as denting or scratching from metal particles. To achieve the best results, carbide-tipped blades and bits are recommended. It's important to note that dull blades can generate excess heat and potentially scorch the metal.

## **HOW ARE THE SHEETS SHIPPED?**

Architectural Metals are shipped via truck, wooden crates, or rolled for courier delivery, depending on the pattern and size of the order (See Quick Reference Guide on pages 28-29 for more information). Upon receipt, it is recommended to remove the sheets from their container and store them flat to prevent excessive roll set and maintain their optimal condition.



### **IS ANY SPECIAL TREATMENT REQUIRED BEFORE OR AFTER FABRICATION TO ENSURE THE PRODUCT'S LONGEVITY?**

Anodization creates a durable surface that resists tarnishing and provides high abrasion resistance. To protect the finish, all products are covered with a clear, peel-off mask. It is essential to keep this mask in place during fabrication to prevent any surface damage.

### **HOW SHOULD ARCHITECTURAL METALS BE STORED?**

Architectural Metals should be stored flat rather than on edge to prevent bowing over time. Place the metal laminates face up in a cool, dry area, ensuring they are fully supported in a flat position. To maintain flatness, use a top sheet of chipboard or a similar material to support the stored sheets.

### **WHAT TYPE OF ADHESIVE IS RECOMMENDED?**

**For Aluminum, Copper, and Hand Painted (Phenolic Backed):** Use any contact cement or cold-set adhesive typically employed with decorative laminates. Avoid spreading or setting adhesive on the metallic surface. For cleanup, use only naphtha or benzene; do not use lacquer solvents or other adhesive removers, as they can damage lacquer coatings.

**For Art Metals (Unbacked):** Use Titebond FastGrab Advanced Polymer Panel Adhesive for all primed, painted, or non-porous surfaces. Again, avoid spreading or setting adhesive on the metallic surface.

### **HOW SHOULD ARCHITECTURAL METALS BE CLEANED?**

To maintain the beauty of your architectural metals, ensure that the cleaning agent you choose is compatible with our anodized or lacquered finishes. For best results, clean surfaces gently with a soft cloth using household cleaners such as waxes, Windex-type solutions, or simply soap and water.

### **ARE THERE ANY PRECAUTIONS TO CONSIDER WHEN HANDLING THIS PRODUCT?**

Metal laminates can conduct electricity and may pose a risk of shocks or short circuits if they come into contact with ungrounded electrical circuits. These laminates are crafted from high-quality aluminum, copper, or stainless steel and may exhibit minor surface imperfections, which are normal. Please inspect the material carefully before use to ensure it meets your requirements.

### **IS COUNTERBALANCING NECESSARY?**

Counterbalancing is necessary with Architectural Metals as with other High Pressure Laminates to prevent warping of the substrate like wallcoverings, wall panels, ceilings and surfaces.

### **IS THERE AN OPTION WHERE COUNTERBALANCING ISN'T REQUIRED?**

Yes! The Artful Metals Collection is available on a variety of 4' x 8' unbacked metal substrates. Our unbacked metals are easy-to-install with no counterbalancing required and can be applied directly to drywall.

#### **MDC INTERIOR SOLUTIONS**

847.437.4000 

info@mdcwall.com 

mdc.is/metals 



# QUICK REFERENCE GUIDE

## COLLECTION: ALUMINUM

Product Name & Finish	Item number	4' x 8'	Rollable for Shipment
Aluminum Gun Metal	248	✓	•
Aluminum Mill	204	✓	•
Aluminum Rondo	202 RON	✓	•
Antique Pewter Mesh	490 NTZ	✓	•
Antique Stainless Reeds	490 PTK	✓	•
Aqua Polished Smoke	1014 AQA	✓	•
Aqua Rose Gold	212 AQA	✓	•
Black Mesh	11 NTZ	✓	•
Brushed Alminum	245	✓	•
Brushed Aluminum Fine Hammered	924 HAM	✓	•
Brushed Aluminum Mesh	924 NTZ	✓	•
Brushed Aluminum Ridges	924 PGQ	✓	•
Brushed Brass	934	✓	•
Brushed Bronze	944	✓	•
Brushed Stainless	256G	✓	•
Brushed Stainless Mesh	256 NTZ	✓	•
Brushed Stainless Reeds	256 PTK	✓	•
Brushed Stainless Ridges	256 PGQ	✓	•
Corrugated Brushed Aluminum	603/924	✓	•
Corrugated Brushed Stainless Steel	603/256	✓	•
Corrugated Mill Aluminum	603/209	✓	•
Diamond Mill Gun Metal	248 DIA	✓	•
Diamond Plate Brushed Aluminum	924 GEK	✓	•
Diamond Plate Brushed Stainless	256 GEK	✓	•
Diamond Polished Smoke	1014 DIA	✓	•
Diamond Rose Gold	212 DIA	✓	•
Gun Metal Mill	603/248	✓	•
Neptune Brushed Aluminum	924 NEP	✓	•
Neptune Polished Smoke	1014 NEP	✓	•
Neptune Rose Gold	212 NEP	✓	•
Polished Aluminum	904	✓	•
Polished Brass	914	✓	•
Polished Smoke	1014	✓	•
Rose Gold	212	✓	•
Titan Aluminum Gun Metal	248 BKE	✓	•
Waterfall Aluminum Gun Metal	248 HM5	✓	•
Waterfall Rose Gold	212 HM5	✓	•



## COLLECTION: COPPER

Product Name & Finish	Item number	4' x 8'	Rollable for Shipment
Antique Copper Mesh	401 NTZ	✓	✓
Antique Copper Ore	C431	✓	✓
Antique Fine Hammered Copper	C462	✓	✓
Fine Hammered Copper	C471	✓	✓
Hammered Copper	C473	✓	✓
Matte Copper	C400	✓	✓

## COLLECTION: HAND PAINTED

Product Name & Finish	Item number	4' x 8'	Rollable for Shipment
Madrid	CA5	✓	
Patina Autumn Leaves	C421	✓	✓
Patina Malachite	C414	✓	✓
Patina Onyx	C412	✓	✓

## COLLECTION: ART METALS

Product Name & Finish	4' x 8'	Crate Shipment Only
Aluminum, Bengal	✓	✓
Aluminum, Fluted	✓	✓
Aluminum, Hammered	✓	✓
Aluminum, Mill Satin	✓	✓
Aluminum, Monaco	✓	✓
Aluminum, Piscean	✓	✓
Aluminum, Tannery	✓	✓

**FOR SPECIAL ORDERS OR CUSTOM PROJECTS CONTACT MDC'S CUSTOMER CARE TEAM AT [CS@MDCWALL.COM](mailto:CS@MDCWALL.COM) OR BY CALLING 847.437.4000**



# MDC INTERIOR SOLUTIONS

**MDCWALL.COM**

**400 HIGH GROVE BOULEVARD**

**GLENDAL HEIGHTS, IL 60139**

**847.437.4000 FAX: 847.437.4017**

in f p X

