

installed.

BY MDC INTERIOR SOLUTIONS

VOLUME SIX

OUT AND ABOUT WITH MDC | CANDICE OLSON NEW PATTERNS | ACOUSTIC SOLUTIONS CASE STUDY





hello sunshine!

WELCOME A DESIGN AWAKENING with a harmonious blend of sunshine yellows, earthy browns and relaxed neutrals. To inject energy, consider the lively yellow of Zintra 1/2 Inch in Sunshine alongside the dynamic geometric patterns of Bolta Contract All About Geo in Gold & White. Furthermore, embody the season's gentle touch with the budding branch motif of Len-Tex Contract Flora in Florescence and the subtly refreshing grid found in Len-Tex Contract Simplify in Lime in the Coconut. Feeling inspired? Scan below to read more about summer trends in our latest blog post!



SCAN NOW TO
READ MORE.

A Zintra 1/2 Inch in Sunshine B Zintra Mesh Powder Coat in Marigold C Vycon Contract Canopy in Yellowheart
D Bolta Contract Silk Road in Grand Bazaar E Len-Tex Contract Flora in Florescence

F Bolta Contract All About Geo in Gold & White
G Len-Tex Contract Simplify in Lime in the Coconut H Natural Textiles III Boetti in Saffron

DURAVi

Introducing MDC's latest design innovation, offering exceptional versatility and flexibility for any interior.

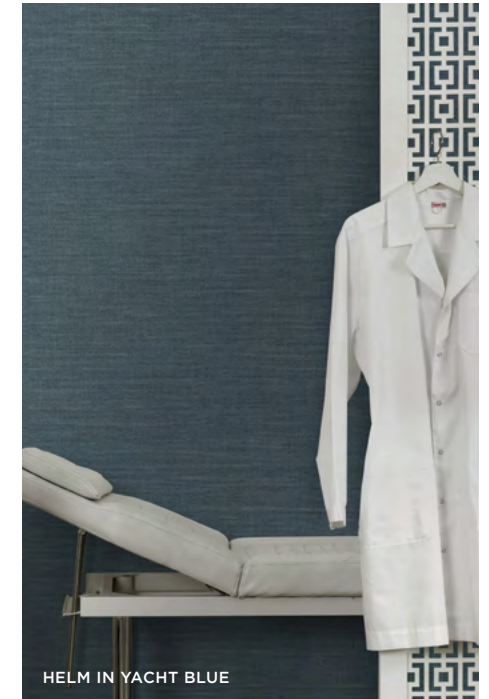


MARRAKATT IN SUNSET CRUISE

Flexible Protection, Enduring Aesthetics



BARON IN MULTIPLE COLORS



HELM IN YACHT BLUE



BUNGALOW IN MULTIPLE COLORS



WILLA IN OLIVENE

DURAVI: UNCOMPROMISING PERFORMANCE, EFFORTLESS UPKEEP

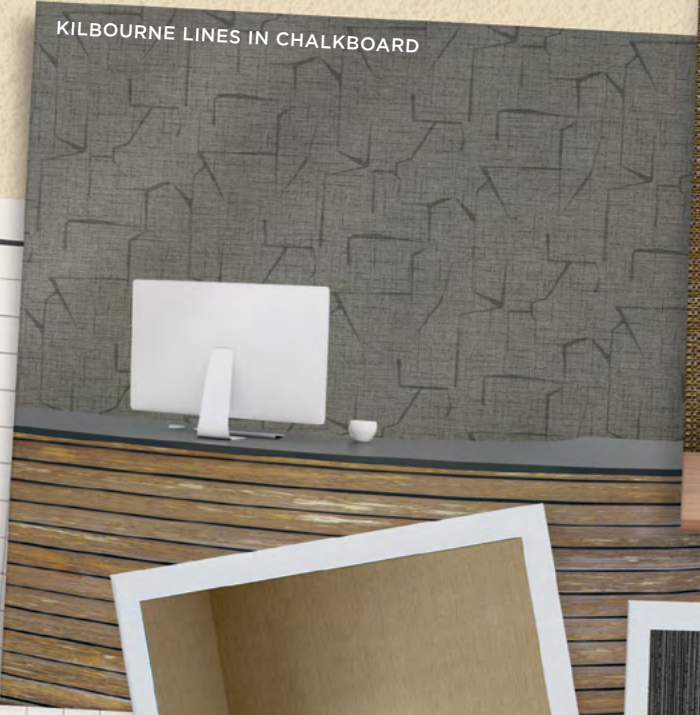
Achieve the perfect balance of lasting beauty and exceptional value with the intelligent engineering of DuraVi, offering robust resistance to wear, tear and other stains. Its 10 inspiring patterns provide aesthetic distinction alongside high-performing durability and remarkably simple cleaning, meeting the demands of commercial interiors with ease.



SCAN NOW TO
READ MORE.

NEW & NOW

Fresh Patterns to Redefine Spaces



MARIAN STRIPE IN LIMON



GROUNDING TEXTURES & TIMELESS INTRICACY

Discover the refined beauty of Restoration Elements' latest patterns, including Kilbourne and Kilbourne Lines, showcasing luxurious woven textures in classic yet contemporary natural shades. These intricate weaves create a sense of enduring style and tactile richness. Also explore Bolta's Woodworker in Gris Beige, which offers a grounded textural element, adding unexpected depth and sophistication to your designs.

CLASSIC ELEGANCE & INVITING DEPTH

Expanding our PVC-free Duratec line of flexible wall protection, we have added new patterns Hollis and Mara. Hollis presents the timeless elegance of classic linen, featuring a refined texture and a crisp, tailored feel, while Mara's chunky weave-inspired design adds inviting depth and warmth to any setting.

MODERN SERENITY & SUBTLE GLAMOUR

Explore the tranquil sophistication of Candice Olson's latest patterns Impulse, Intrigue and Natural Beauty, where modern aesthetics meet calming earth-inspired neutrals for effortlessly stylish spaces. Complement this serene feel with select new offerings from Bolta, such as Silk Cascade in Gilded, which introduces a touch of refined glamour and exquisite texture, perfect for elevating contemporary interiors.





Candice Olson

Celebrating her latest pattern release, featuring Impulse, Intrigue and Natural Beauty, designer Candice Olson blends classic design principles with a modern sensibility, creating wallcoverings that feel both fresh and familiar.

As Candice explains, "I like to take the best of classic design elements and stylize them with a modern twist. My method of re-interpretation creates wallcoverings that feel fresh and contemporary but at the same time familiar and comforting." Her inspiration draws from the inherent order found in nature, translating into patterns with distinct essences. Natural Beauty combines structured elements with organic color variations and subtle shimmer, while Intrigue offers the

comforting look of natural grass cloth in a versatile vinyl, ideal for serene commercial spaces. Impulse, a fine-lined geometric with a hand-drawn quality, balances unique texture with soft curves for a contemporary yet welcoming feel. Candice sees wallcoverings as a crucial element in setting the tone of a space, also noting, "Designers are putting more and more emphasis on wallcoverings as the main element to make a statement or create a feeling or mood in a space."



PROJECT PROFILE:
LEBANON OPERA HOUSE
LEBANON, NEW HAMPSHIRE

Breathing New Life Into Historical Spaces

At MDC, we pride ourselves on our collaborative partnerships. The recent renovation of the Lebanon Opera House, a 1920s New Hampshire landmark, exemplifies this. Read on to find out more about how we collaborated with designers Lauren McGuire and Genella McDonald from Stibler Associates on this transformative project.



Chloe Rodriguez
MDC Project Coordinator



Jeff Bergeron
MDC Account Executive

This project came together seamlessly thanks to incredible teamwork from our MDC internal team!

THE DESIGNERS' VISION WAS TO "BREATHE NEW LIFE INTO THE SPACE WHILE STAYING TRUE TO ITS 1920s ROOTS, USING ART DECO INFLUENCES—GEOMETRIC PATTERNS, RICH JEWEL TONES AND GOLD ACCENTS—TO HONOR THE THEATER'S HISTORY WHILE MAKING IT FEEL FRESH AND INVITING."

MDC was a key partner in bringing the design firm's vision to life. Their dedicated MDC Account Executive, Jeff Bergeron, collaborated closely with Lauren and Genella to understand and achieve their design goals. Behind the scenes, MDC Project Coordinator Chloe Rodriguez ensured a smooth execution, managing all the technical aspects of design and production, including the selection of specific Zintra material colors and thicknesses. MDC also provided additional training to optimize art file output, giving the designers the hands-on support they needed to translate their concepts into reality.

Lauren and Genella focused on balancing "historical charm with durability and functionality," selecting materials for both aesthetic appeal and their ability to withstand high traffic in a performance venue. As both designers noted, "MDC played a key role in bringing the design to life with their selection of unique wallcoverings and dimensional surfaces." They also emphasized the impact of our products in enhancing key areas, including the vestibule, theater entry, ticket booth and vaulted stair area.

Our Zintra selection, in particular, was instrumental in meeting the Opera House's functional and aesthetic requirements. The designers explained that it contributed to "improving acoustics, enhancing durability and creating a cohesive design thread." Specifically, Zintra was sourced in order to create a sound-absorbing "ceiling medallion" in the vestibule, enhancing both the visual and acoustic experience for patrons within the theater.

Beyond its acoustic benefits, the versatility of Zintra was a key factor in its selection. The design team also highlighted that this product line's personalization options, such as custom graphic printing and precise cutting, allowed them to meet the project's unique performance and aesthetic goals. This flexibility was particularly valuable in allowing them to integrate elements that complemented the theater's existing architectural elements, such as its original arches.

In addition to Zintra, the project also incorporated Dimension Walls and Type II wallcoverings, further showcasing the breadth of MDC's offerings in creating a truly transformative space.

Ultimately, the renovation has "significantly transformed the experience for both visitors and performers," Lauren and Genella both shared, creating a more polished and professional space while "replacing the previous town hall atmosphere with a more refined ambiance." Chloe also agreed, stating "I knew our Zintra products would produce an ideal outcome because of the endless design aesthetics and sound functionality." MDC is proud to have partnered in this transformation, ensuring the Lebanon Opera House will continue to serve and delight audiences for generations to come.



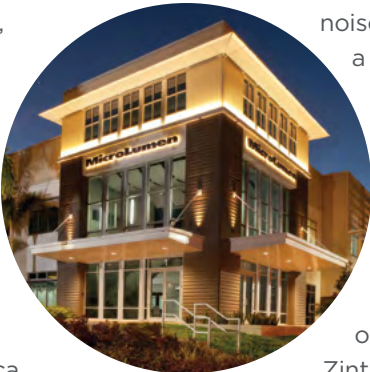
SCAN NOW
TO BROWSE.

PROJECT PROFILE:
MICROLUMEN
OLDSMAR, FLORIDA

Quietly Vibrant

MDC TRANSFORMS MICROLUMEN WITH NATURE-INSPIRED DESIGN

At MDC, we're proud to have played a key role in a recent transformation at MicroLumen, a leading innovator in lighting solutions based in Florida. Elevation Architecture's Project Manager, Jessica Kisthart, envisioned a remarkable reimagining of a high-traffic corridor linking manufacturing and private office spaces. Her concept, centered around the color green and the evocative idea of "Back to Nature," aimed to create a truly unique and restorative experience while tackling significant acoustic challenges inherent in the space. The corridor's function



as a central connector, lined with glass-fronted offices, made effective noise reduction a paramount concern for employee well-being and productivity. The solution began to take shape through our extensive Zintra catalog. Jessica was particularly drawn to the dynamic interplay of our Wave and Batten patterns, noting, "Achieving quiet was the ultimate goal, and the Wave and Batten patterns perfectly embodied my concept with their fractal and warm textures, offering a visual representation of nature's complexity and comfort."



These designs not only resonated profoundly with the overarching natural theme but also offered promising acoustic properties crucial for the corridor's functionality. The knowledgeable support of MDC Account Executive Rebecca Coles, serving the Florida region, was crucial in this initial discovery and selection phase, as she guided Jessica towards the most effective solutions for the project's specific needs. The ultimate selection of our Zintra 3D Wall Panels and Baffles was driven by their innovative design options, exceptional color saturation that perfectly matched the "Back to Nature" palette and the significant ability for customization to fit the unique dimensions of the MicroLumen space. Jessica explained, "Zintra provided me with design options that no other manufacturer had, allowing my concept to seamlessly merge with critical functionality."



SCAN NOW TO
READ MORE.



OUT & WITH MDC ABOUT

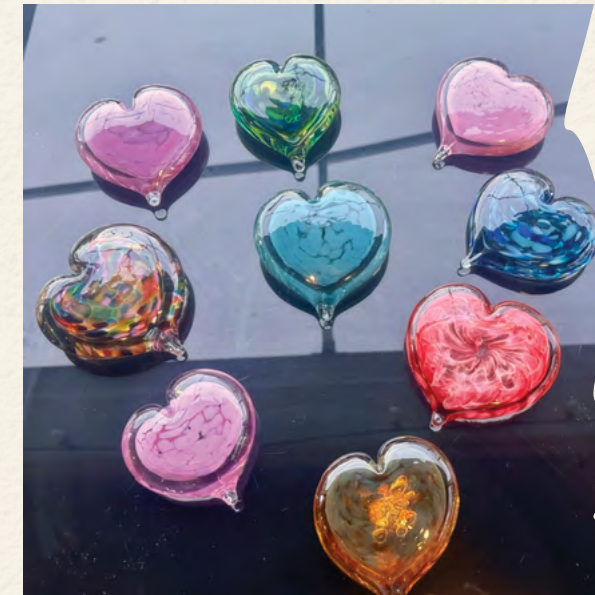


Arizona's Design Icon: Amannda Adkins Receives Prestigious Award

Amannda Adkins, our dedicated Arizona Account Executive, has achieved a significant milestone, being named a Design Icon by Sources for Design Magazine in the product category. This award celebrates Amannda's remarkable ability to curate and present MDC's single-source design solutions, effectively

transforming client visions into reality. Her tireless dedication to understanding client needs, coupled with her deep product knowledge, has resulted in numerous award-worthy projects throughout Arizona. This recognition not only honors Amannda's individual achievements but also highlights MDC's commitment to providing comprehensive and impactful design solutions.

SCAN NOW TO
READ MORE.



Forging Connections: Designers Craft Art at Ann Rank's Event

This past Valentine's Day, Ann Rank, our Florida Account Executive, orchestrated a truly unique experience for leading designers. At Orlando Glass Studio, creativity ignited as participants collaborated with skilled artisans to craft personalized glass hearts. The vibrant hues of molten glass reflected the warmth of the evening, fostering connections and inspiring design visions. This wasn't just a social event; it was a celebration of artistic expression and the power of shared experiences, all made possible by Ann's dedication to forging meaningful relationships within the design community.

Winter Wonder: Toledo Design Community Warms Up with Rebecca Smith at IIDA Event

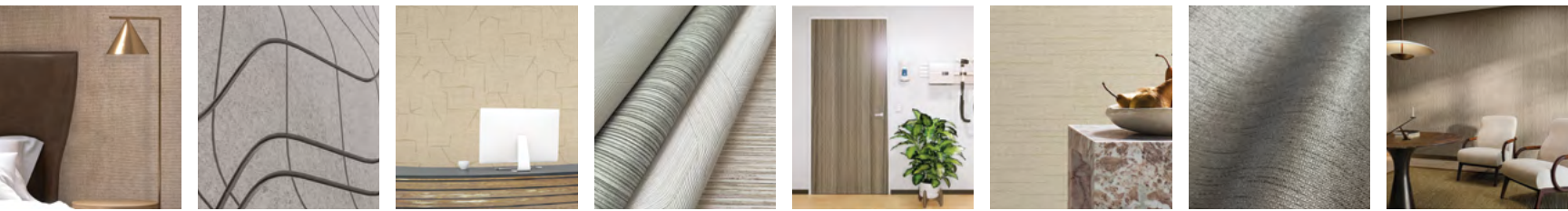
Rebecca Smith, our midwest region Account Executive, brought a touch of warmth to the Toledo design community at the recent IIDA Ice Skating event. While designers gracefully glided across the ice, Rebecca's coordination provided a delightful hot cocoa bar for participants to enjoy. The evening was a huge success, resulting in a hub of connection where laughter and shared stories warmed hearts as much as the steaming cocoa! Rebecca's initiative fostered a sense of camaraderie, turning a chilly winter evening into a memorable gathering for Toledo's design professionals.





400 High Grove Blvd
Glendale Heights, IL 60139

INTERIOR SOLUTIONS



LET'S MAKE IT HAPPEN.

MDC is your trusted source for a variety of interior needs. Backed by a team of experts ranked #1 in customer service, MDC offers high-style designs paired with proven functionality. We pride ourselves on enriching contract spaces, hotels and restaurants with premium wallcoverings, wall panels, paints, mirrors, acoustic solutions and so much more.



[MDCWALL.COM](https://www.mdcwall.com)