



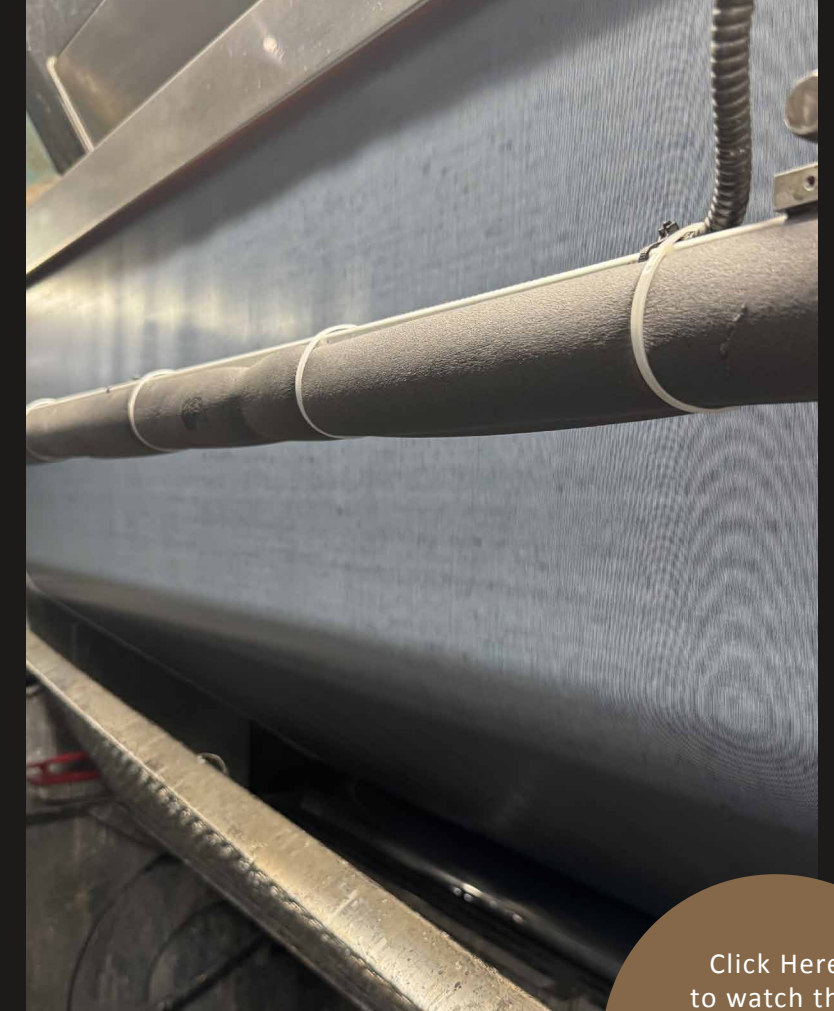
RESTORATION
ELEMENTS™

MDC
INTERIOR SOLUTIONS

YORK
CONTRACT

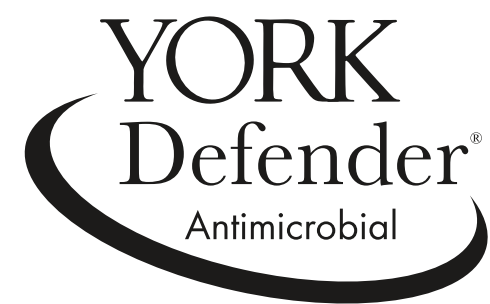
ARTISTRY IN THE MAKING

Designed for durability, York's commercial grade wallcoverings are as beautiful as they are strong. Created for hospitality, corporate, healthcare and retail facilities. York Contract offers the longevity, scrubbability and stain resistance associated with commercial grade vinyl in designer style and color for the modern marketplace.



[Click Here to watch this short video to get a glimpse of the wallcovering process.](#)





24/7 Clean Protection For Beautiful Walls

York Defender® has been successfully tested against microbes and germs with results upwards of 90% effectiveness in reduction of product surface concentrations over a 24-hour period, offering continual protection for ongoing peace of mind.

- › Supported by both Antiviral and Antimicrobial tests
- › Does not need scrubbing or reapplication to maintain Antimicrobial protection
- › Can be bleach cleaned with H₂O/bleach solution as recommended by the CDC
- › Long Term Antimicrobial solution
- › Continual protection for peace of mind



RESTORATION ELEMENTS™

The utilitarian design of commercial warehouse space has developed to become a sophisticated balance of architectural heritage and organic minimalism, inspiring a new evolution in industrial style.



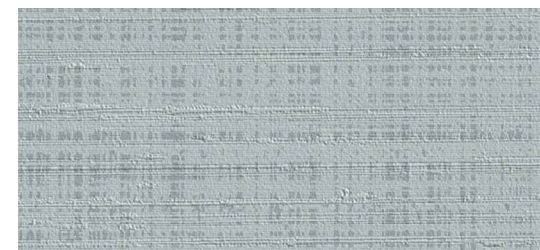
NEW | DISTRICT SILK

DISTRICT SILK



—| MRE1829

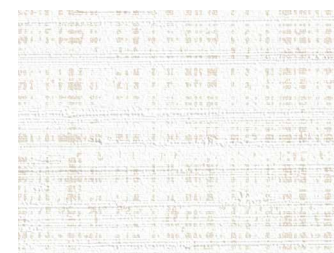
—| MRE1826



MRE1822 Slate Ridge



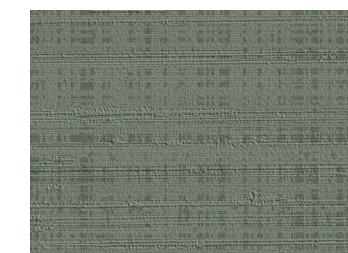
MRE1823 Jute



MRE1824 Crystal Shore



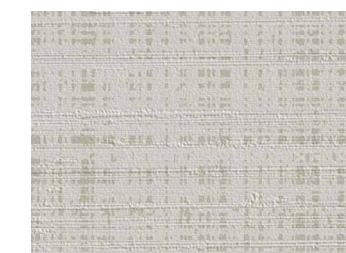
MRE1825 Gilded



MRE1826 Landscape



MRE1827 Optic White



MRE1828 Pewter



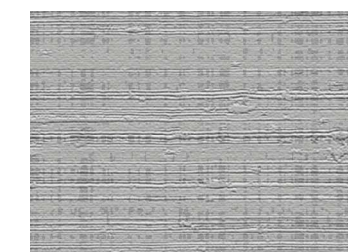
MRE1829 Ink Press



MRE1452 River Haze



MRE1453 Pearl Trax



MRE1458 Platform

—| MRE1822

NEW | REVIVAL SILK

REVIVAL SILK



REVIVAL SILK



—| MRE1833

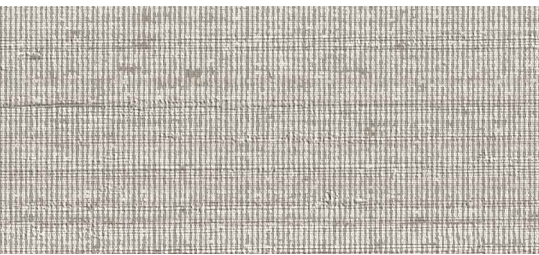
—| MRE1831

—| MRE1838

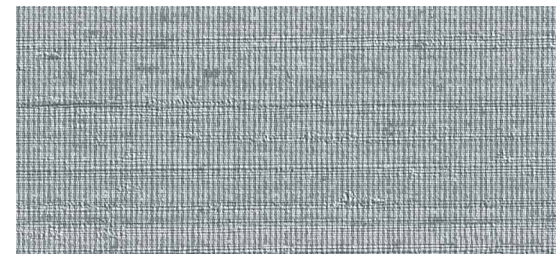
—| MRE1841

—| MRE1834

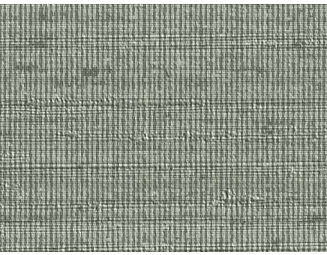
—| MRE1835



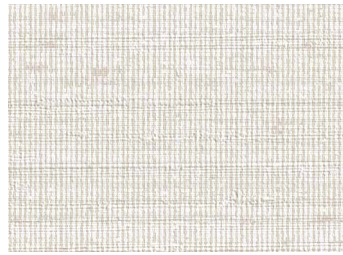
MRE1831 River Haze



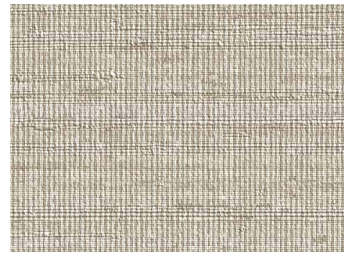
MRE1832 Shadow



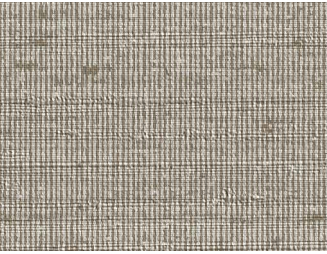
MRE1833 Landscape



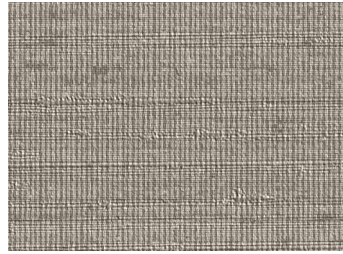
MRE1834 Pearl Trax



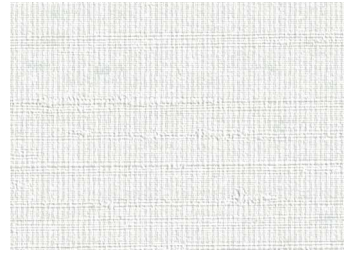
MRE1835 Sun Deck



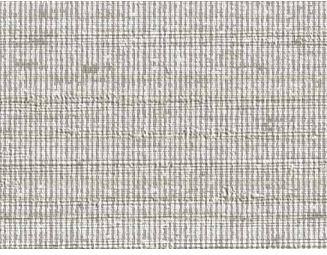
MRE1836 Jute



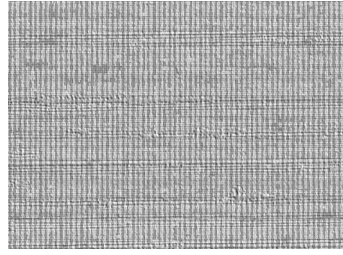
MRE1837 Adirondack



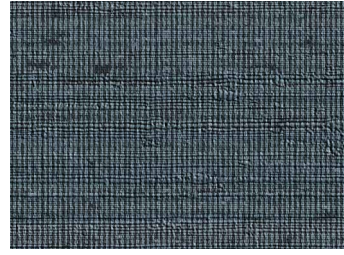
MRE1838 Optic White



MRE1839 Featherstone



MRE1840 Platform



MRE1841 Ink Press

NEW | REVIVAL

REVIVAL





—| MRE1846

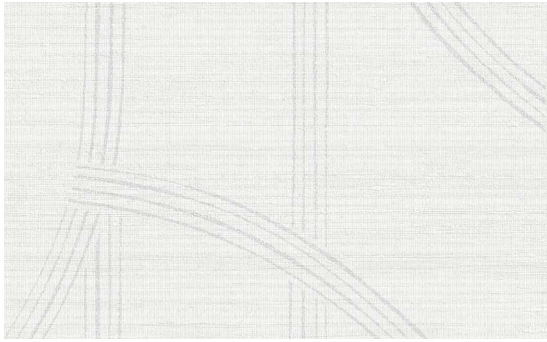
—| MRE1847

—| MRE1848

—| MRE1843



MRE1843 River Haze



MRE1844 Optic White



MRE1845 Pearl Trax



MRE1846 Platform



MRE1847 Ink Press



MRE1848 Onyx

SPECS

District Silk

Installation: Non-Reversible/Random

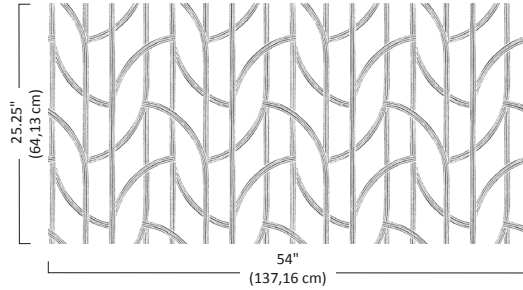
Revival Silk

Installation: Non-Reversible/Random

Revival

Installation: Non-Reversible/Straight

Repeat: 25.25"



Width: 54"

Weight: 20 oz. TYPE II Vinyl

Backing: Non-Woven

Anitmicrobial: EPA-Registered Ingredients

Class A Fire Rated/ASTM E84



Additional information on:

- Product Specifications
- Environmental Attributes
- Moisture, Mold & Permeability
- Warranty

Visit: mdcwall.com

HI-RES ASSETS

Product Images, Rollshots & Roomsets

↓ [DISTRICT SILK](#)

↓ [REVIVAL SILK](#)

↓ [REVIVAL](#)

WEB ASSETS

Product Images, Rollshots, Roomsets, Schematics

↓ [DISTRICT SILK](#)

↓ [REVIVAL SILK](#)

↓ [REVIVAL](#)

ADDITIONAL ASSETS

Copy, Inspiration, Manufacturing, Spec Sheets

↓ [DISTRICT SILK](#)

↓ [REVIVAL SILK](#)

↓ [REVIVAL](#)

COLLECTION ASSETS

↓ [GROUP ROLLSHOTS](#)

↓ [DIGITAL TIPCARDS](#)

↓ [PRICE SHEET](#)



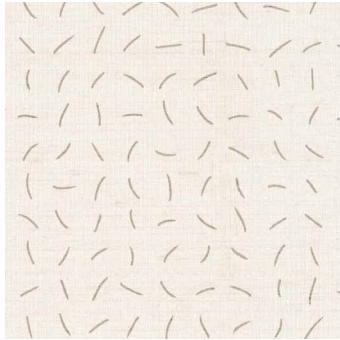
MRE1805

ARCLINE

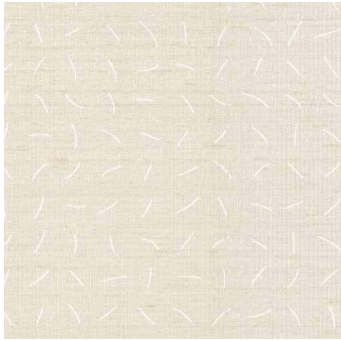
Demilune shapes create a captivating interplay of shine and color that flows across a high-performance canvas, inspired by the distinctive weave of handloomed silk.



MRE1805 Steel



MRE1806 Crystal Shore



MRE1807 Pearl Trax



MRE1808 Hyde



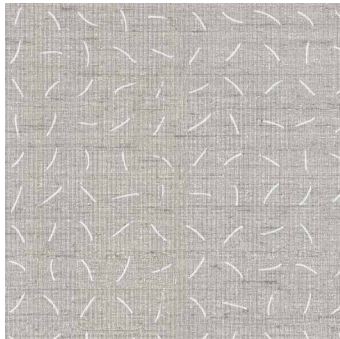
MRE1809 Fog Transit



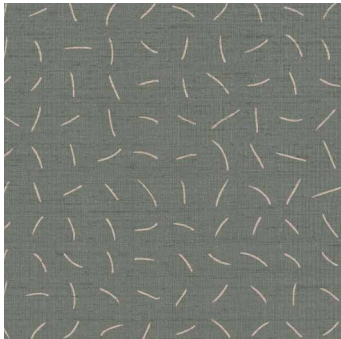
MRE1810 Optic White



MRE1811 Glimmer



MRE1812 River Haze



MRE1813 Rotary



REPETITION

A textural striation of vertical lines shifts with light, creating a dynamic visual experience.



MRE1815 Gilded



MRE1816 Optic White



MRE1817 Powder Sand



MRE1818 Shale



MRE1819 Glimmer



MRE1820 Chalkboard

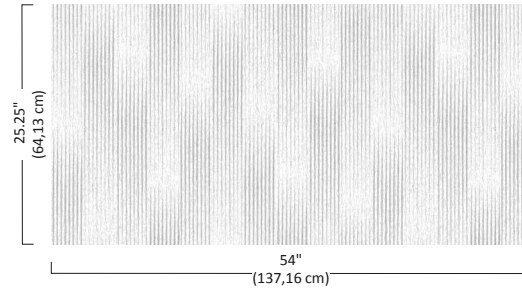
SPECS

Arcline

Backing: Non-Woven
Installation: Non-Reversible/Straight
Repeat: 12.63"

Repetition

Backing: Osnaburg
Installation: Non-Reversible/Drop
Repeat: 25.25"



Width: 54"
Weight: 20 oz. TYPE II Vinyl
Anitmicrobial: EPA-Registered Ingredients
Class A Fire Rated/ASTM E84



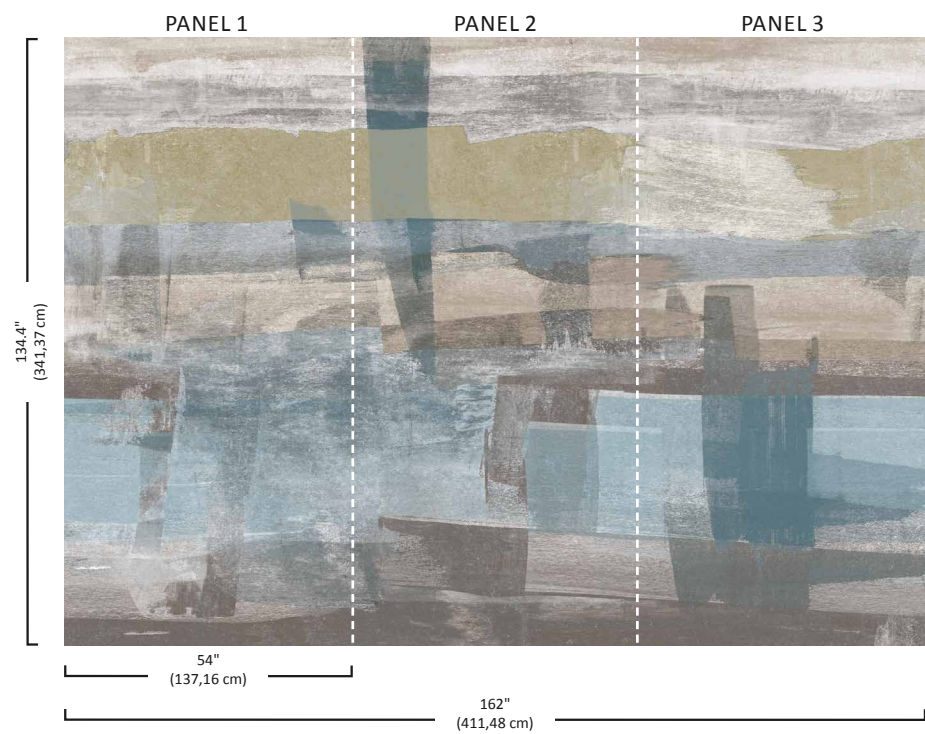
Additional information on:
• Product Specifications
• Environmental Attributes
• Moisture, Mold & Permeability
• Warranty

Visit: mdcwall.com





— I MRE1800



MRE1800 Blue Cargo

PERCEPTION

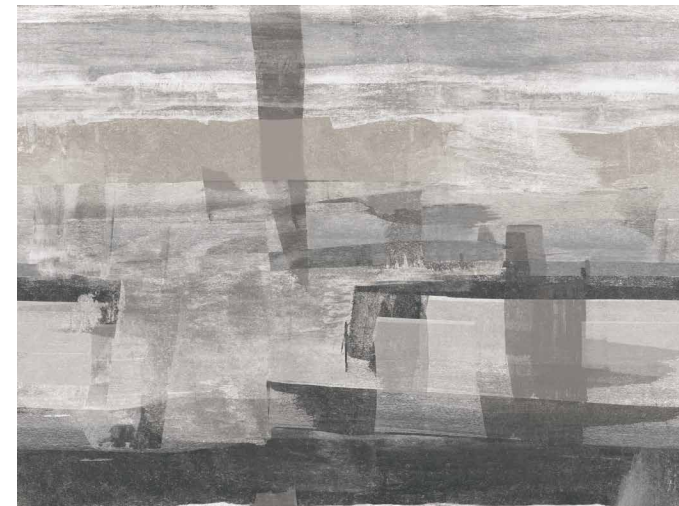
Brushstrokes create the illusion of an artfully crafted, scenic landscape.



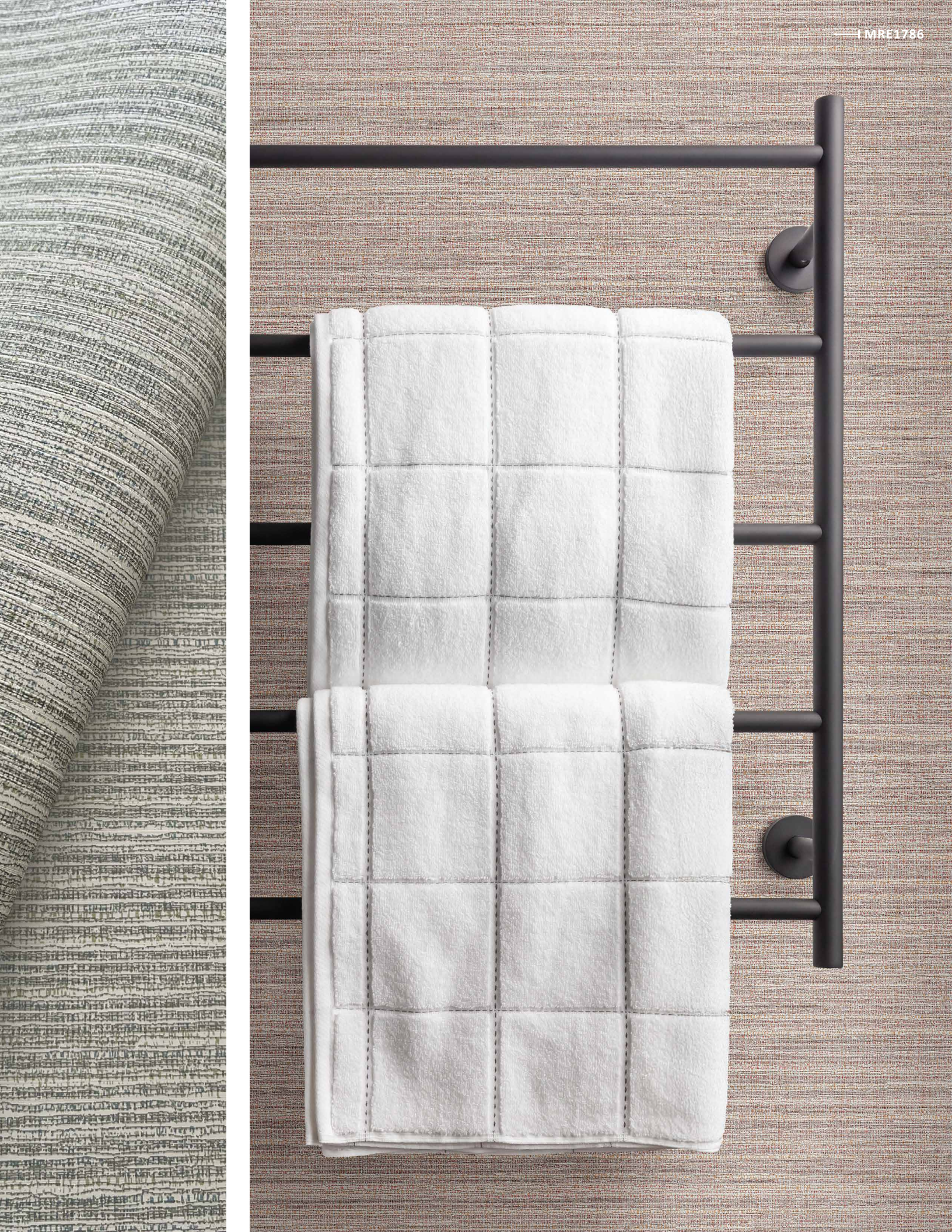
MRE1801 Crystal Shore



MRE1802 Esquire

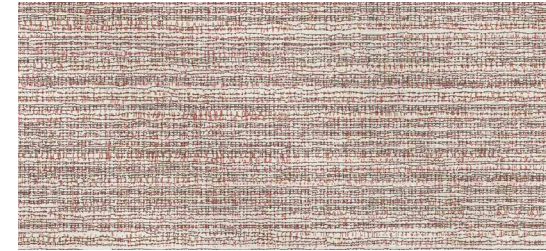


MRE1803 Fog Transit

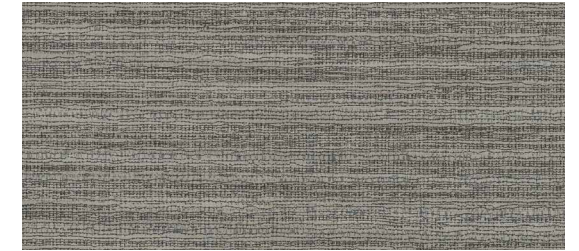


SILK SCREEN

The rugged organic texture of raw silk inspires the handmade multi-color effect to combine the best in casual and luxury aesthetics.



MRE1786 Esquire



MRE1787 Fog Transit



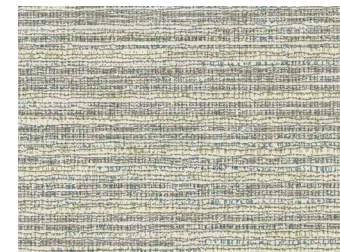
MRE1788 River Haze



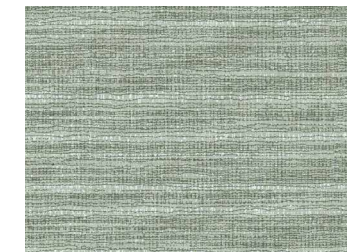
MRE1789 Arctic Shell



MRE1790 Crystal Shore



MRE1791 Platform



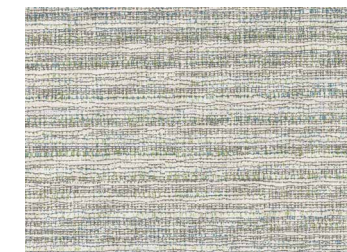
MRE1792 Rotary



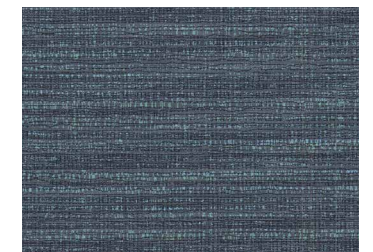
MRE1793 Pearl Trax



MRE1794 Pewter



MRE1795 Ash

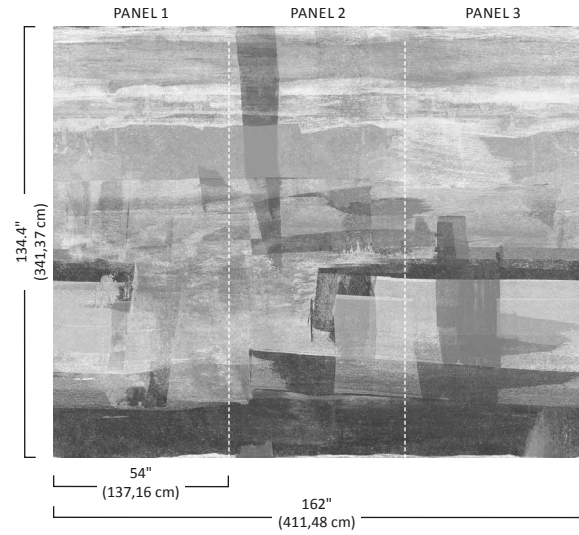


MRE1796 Ink Press

SPECS

Perception

Installed Mural Size: 162" W x 134.4" H
Panel With: 54"
Installation: Non-Reversible/Straight
Repeat: 134.4"



Silk Screen

Width: 54"
Installation: Non-Reversible/Random
Antimicrobial: EPA-Registered Ingredients

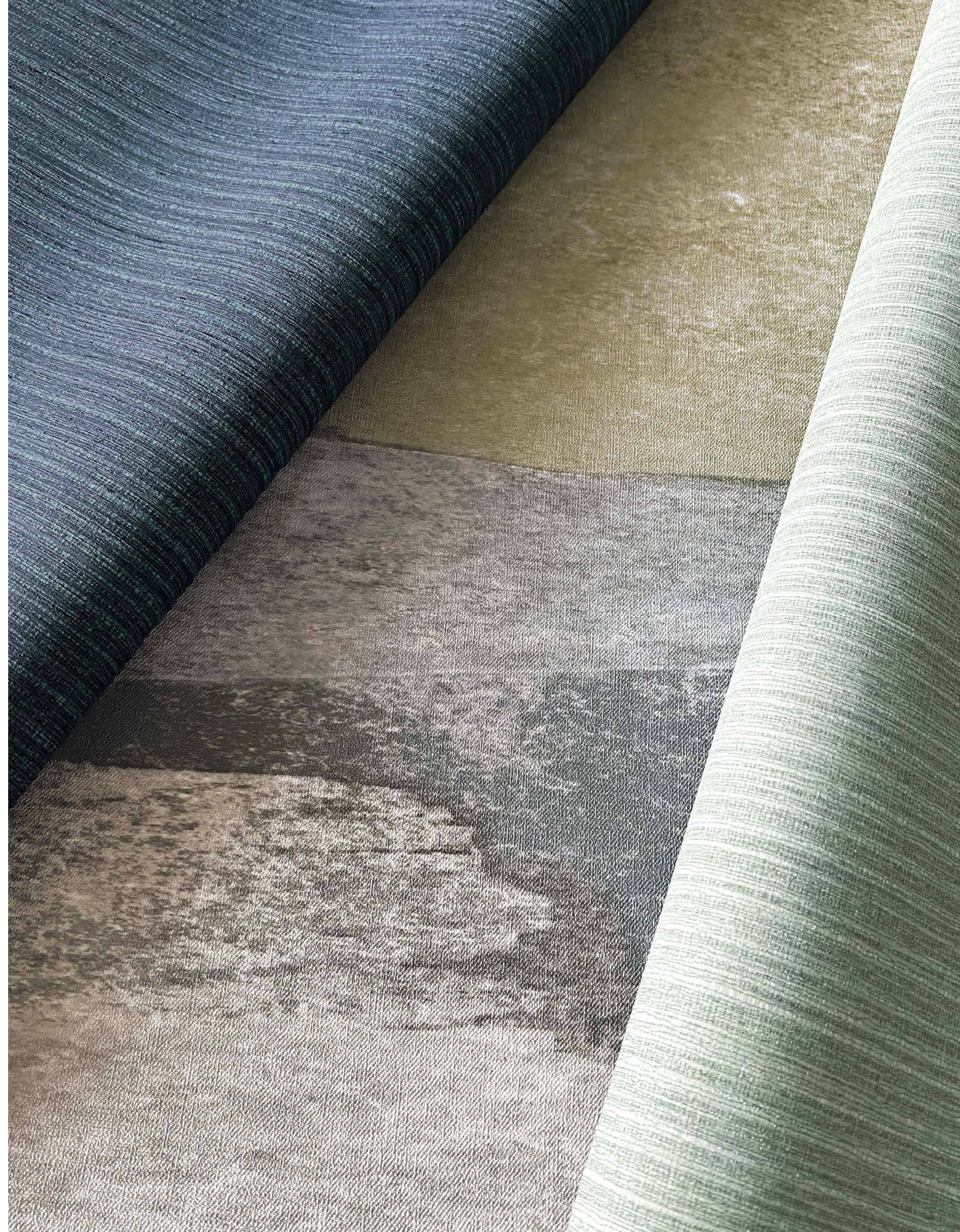
Simulating natural silk, this wallcovering will panel when installed.



Weight: 20 oz. TYPE II Vinyl
Backing: Non-Woven
Class A Fire Rated/ASTM E84

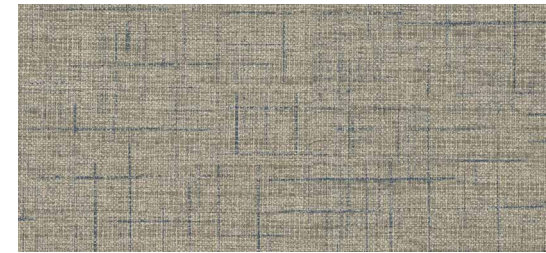
Additional information on:
• Product Specifications
• Environmental Attributes
• Moisture, Mold & Permeability
• Warranty

Visit: mdcwall.com

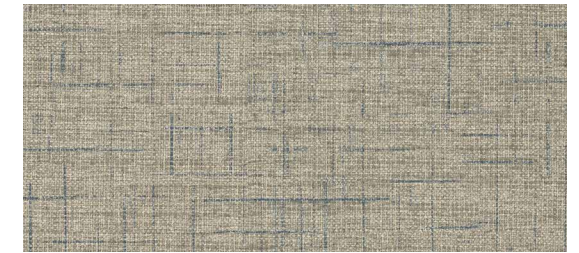


KILBOURNE

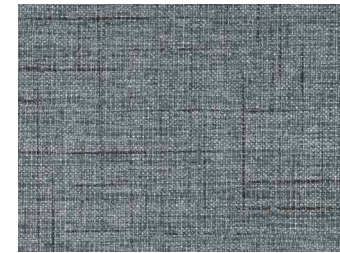
This woolen-inspired source classic draws upon the beauty of traditional corporate style, updated with bright twists of thread for a splash of contemporary color.



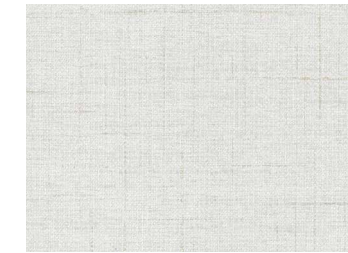
MRE1765 Platform



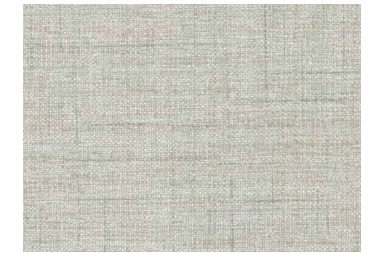
MRE1766 Chalkboard



MRE1767 Blue Cargo



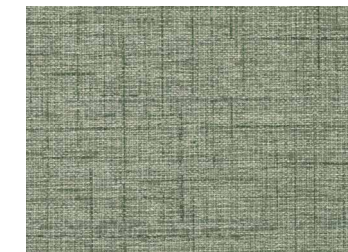
MRE1768 Arctic Shell



MRE1769 Pewter



MRE1770 River Haze



MRE1771 Rotary



MRE1772 Crystal Shore



MRE1773 Pearl Trax



MRE1774 Hyde



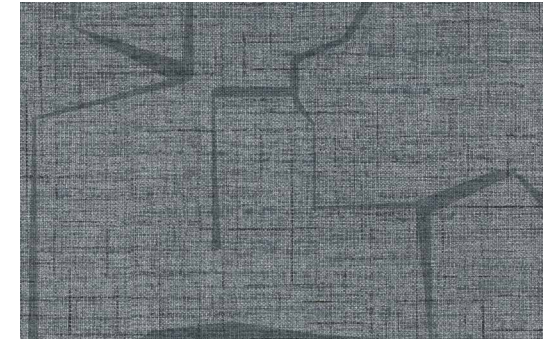
MRE1775 Fog Transit



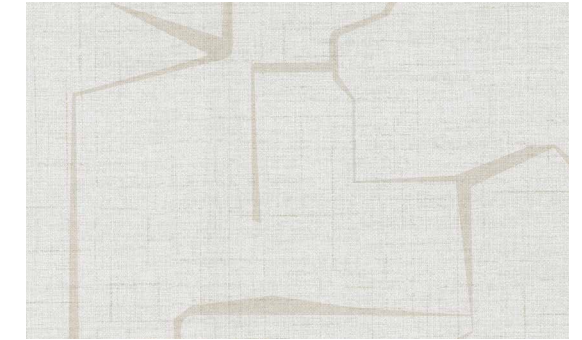
— | MRE1778

KILBOURNE LINES

The pattern mix of cleanly angled lines and menswear suiting style reflects organic geometry's soft curves that take the hard edge off abstraction and propriety.



MRE1778 Blue Cargo



MRE1779 Arctic Shell



MRE1780 Pearl Trax



MRE1781 River Haze



MRE1782 Platform



MRE1783 Chalkboard



SPECS

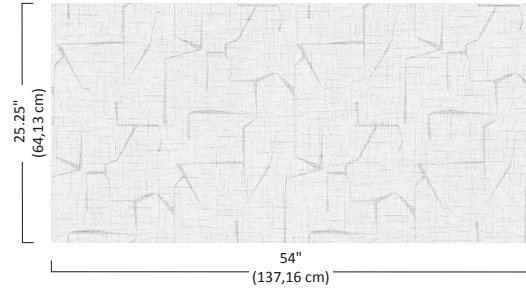
Kilbourne

Installation: Reversible/Random

Kilbourne Lines

Installation: Non-Reversible/Straight

Repeat: 25.25"



Width: 54"

Weight: 20 oz. TYPE II Vinyl

Backing: Non-Woven

Antimicrobial: EPA-Registered Ingredients

Class A Fire Rated/ASTM E84



Additional information on:

- Product Specifications
- Environmental Attributes
- Moisture, Mold & Permeability
- Warranty

Visit: mdcwall.com



ADDENDUM

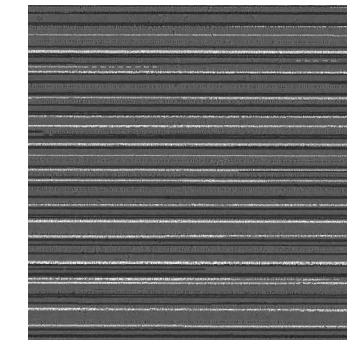
Stacked metal sheets inspire the feel of authentic industrial strength in this horizontal stria, updated to represent the addition of softened Brutalist form to contemporary loft living.



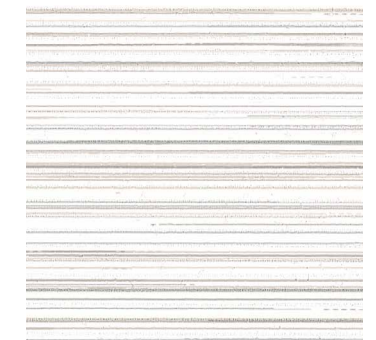
MRE1748 Aluminum



MRE1749 Glimmer



MRE1750 Graphite



MRE1751 Artic Shell



MRE1752 Crystal Shore



MRE1753 Sun Deck



MRE1754 Rotary



FAÇADE

Replicating the dynamic horizontal brushstrokes of hand-applied plaster adds an organic face to this modern architectural pattern.



MRE1758 Crystal Shore



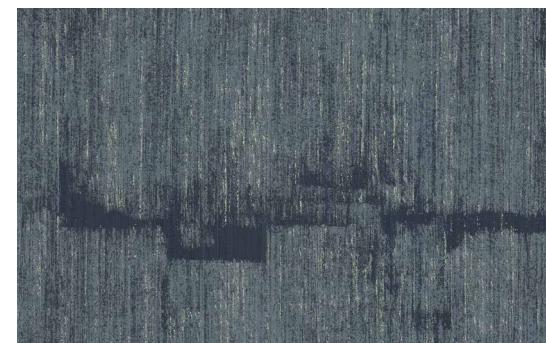
MRE1759 Fog Transit



MRE1760 River Haze



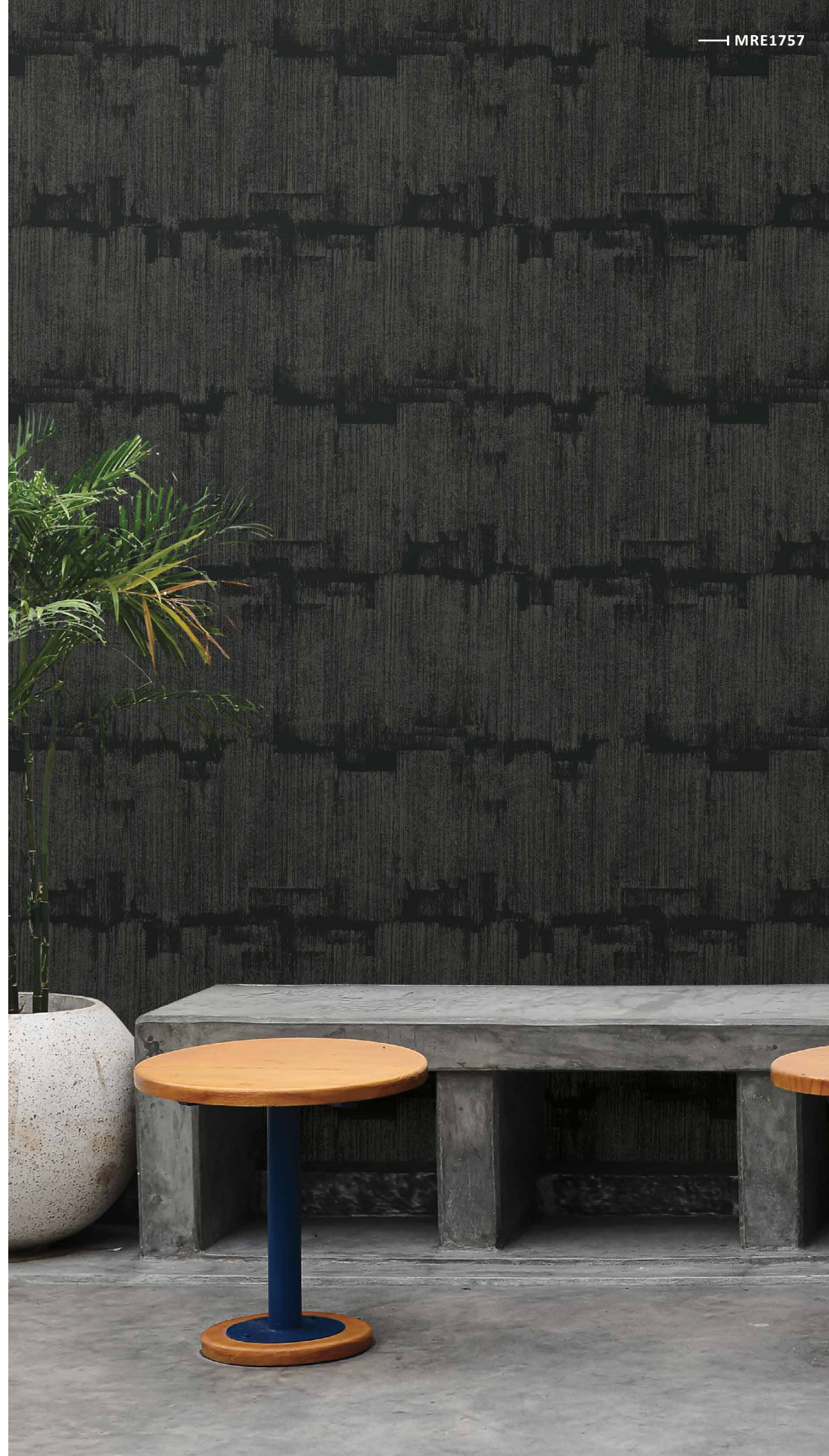
MRE1762 Pearl Trax



MRE1761 Ink Press



MRE1757 Shadow



SPECS

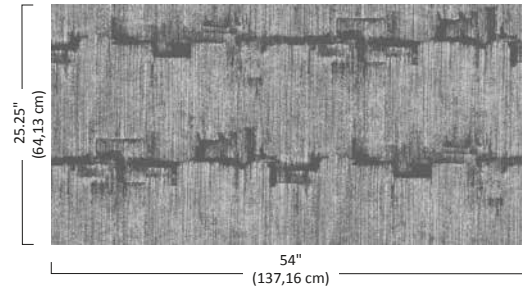
Addendum

Installation: Reversible/Random

Façade

Installation: Non-Reversible/Straight

Repeat: 25.25"



Width: 54"

Weight: 20 oz. TYPE II Vinyl

Backing: Non-Woven

Antimicrobial: EPA-Registered Ingredients

Class A Fire Rated/ASTM E84



Additional information on:

- Product Specifications
- Environmental Attributes
- Moisture, Mold & Permeability
- Warranty

Visit: mdcwall.com





Microvent[®] Perforation Services

Available for your commercial wallcovering to mitigate mold and mildew and improve airflow.

Custom Capabilities

Our commercial customs team is dedicated to working together with you to create unique options for your customer's needs.

Visit YorkContract.com to learn more.





RESTORATION
ELEMENTS™

MDC
INTERIOR SOLUTIONS

YORK
CONTRACT