

SPRAYED APPLICATION REQUIRED EQUIPMENT & SETTINGS

Getting Started

To ensure a proper application, please read the provided product specs and follow the steps in this guide for the required materials and equipment set-up.

COVERAGE RATE: Up to 200 square feet per gallon.

APPLICATION: Spray - Level 5 drywall finish recommended.

THINNING: Thin if needed. Thin only with water - 8oz. Max.

REQUIRED EQUIPMENT:

- **CONVENTIONAL:** BINKS® 2100 or 2001 - 63PB or 66SK External Mix Air Cap / 66 SS Fluid Nozzle / 565 Needle / 2-gal. dual regulated pressure pot rated at 80 psi or greater with 5 ft. 1/4-inch ID airline and 25 ft. 3/8-inch ID fluid line.
- **HVLP:** Graco 4900 ProComp™ / 4-stage Turbine / #3 Needle/Nozzle Setup or comparable equipment
- **HYBRID:** BINKS® Mach 1 - 94P Air Cap / 97 Fluid nozzle / 2-gallon pressure pot or comparable equipment
- **COMPRESSOR:** Compressor with a rating of 6.5 SCFMs @ 90 PSI. NOTE: Material not sprayed at 90 PSI.

Conventional & Hybrid Setup

1. Thoroughly mix LiquaPearl following the directions found in the Preparation section on the following page.
- 2a. Conventional: Increase FLUID pressure to produce a 3-5 inch stream of paint before it begins to arch (see illustration).
- 2b. Hybrid: Increase FLUID pressure to produce a 3-4 inch stream of paint before it begins to arch (see illustration).
3. Replace air cap and add AIR pressure until atomization is achieved. Then, back air pressure off slightly.

NOTE: IDEAL AIR PRESSURE WILL LEAVE PAINT SLIGHTLY UNDER ATOMIZED!

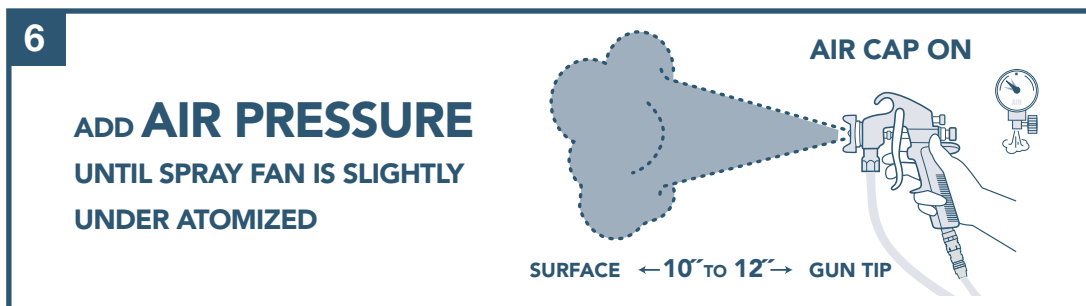
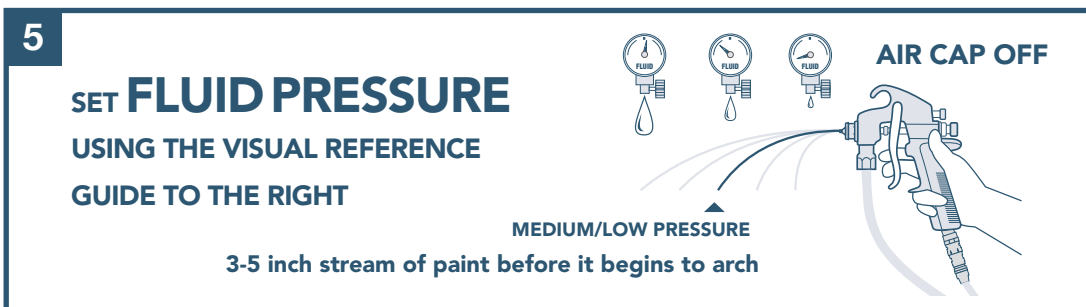
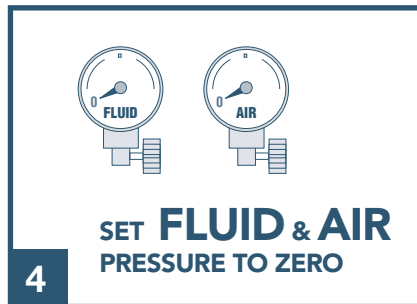
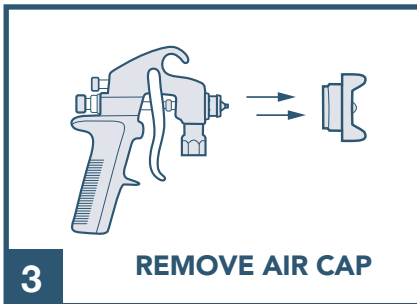
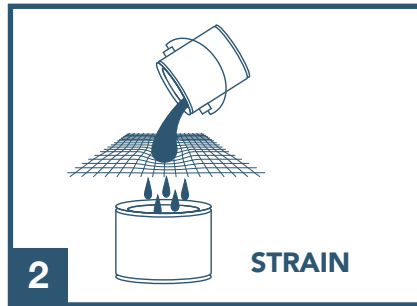
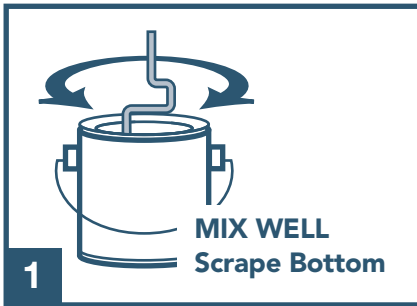
NOTE: LOOK FOR A FAN WIDTH APPROXIMATELY 12" WITH GUN 10"-12" FROM WALL!

HVLP Setup

1. Thoroughly mix LiquaPearl following the directions found in the Preparation section on the following page.
2. Set fan adjustment as wide as possible.
3. The trigger should start wide open. FOR PROPER APPLICATION, MATERIAL SHOULD BE SLIGHTLY UNDER ATOMIZED! MAY NEED THINNING! 8 oz. WATER MAX!
4. If using an HVLP with a pressure pot, set fluid pressure to produce a 3-4 inch stream of paint before it begins to arch.

Surface Preparation

All surfaces must be clean and dry. Remove all loose old paint, grease, oil, dirt, mold, mildew, wax and other contaminants. Lightly sand and de-gloss areas. Spot prime and sand all patched areas. A LEVEL 5 FINISH IS RECOMMENDED on drywall. Do not apply to new concrete surfaces until they are fully cured.



Sprayed Application

SPRAY GUN POSITION

Position the spray gun approximately 10-12 inches from the surface to be painted. Keep spray gun level at all times.

SPRAY STROKE RANGE

Begin each stroke a few inches before the edge of the surface. Move in one continuous vertical direction until the other edge is reached. Release the trigger and continue the motion for a few inches past the edge. Repeat process for the return stroke.

SPRAY FAN OVERLAP

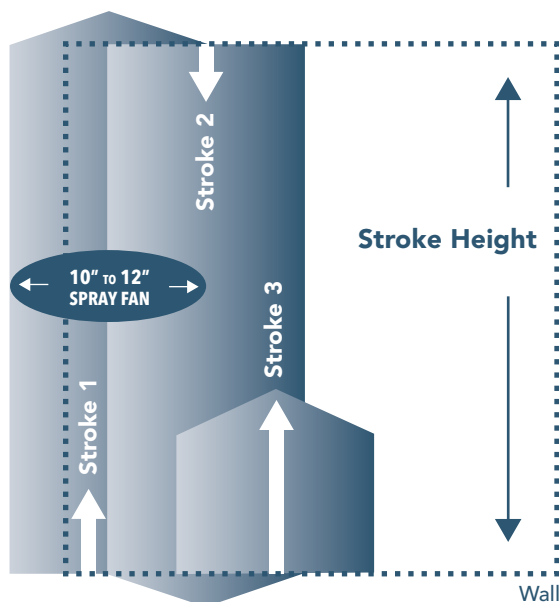
Overlap each spray stroke by 50-75%. Do not spray with a wet edge. The spray stroke should be fast enough that a wet edge does not develop. Keep each pass light.

NUMBER OF PASSES

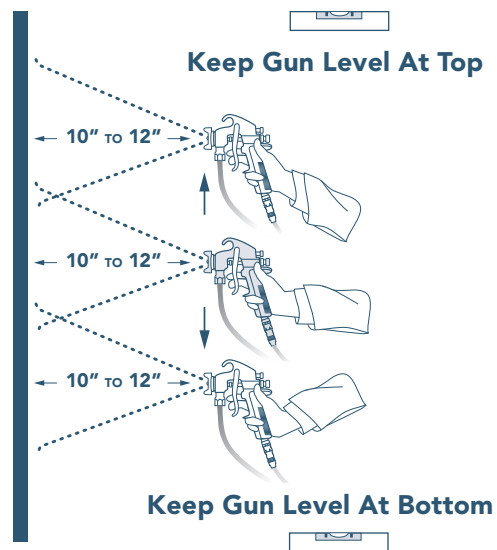
4 to 5 light passes. **1st Pass:** Primer still visible—may appear striped. **2nd Pass:** Finish begins to fill in—striping still visible. **3rd Pass:** Color should appear solid and uniform. Close to complete. **4th Pass:** Surface should be complete. **5th Pass:** ONLY IF NECESSARY. Wait until each pass is dry before proceeding to the next pass.

Don't Spray With A Wet Edge

Face View - 50% Spray Fan Overlap



Side View - Keep Gun Level



 Examine from multiple angles before determining if it is finished. It should look the same from every direction. If striping or blemishes are noticeable when viewed at an angle, apply another light pass.

Troubleshooting

Call our support line at 1.800.621.4006 if you are unclear on any step of the application. You'll be helped by an experienced professional painter, just like you.

FINISH APPEARS STRIPED:

- (1) LiquaPearl is sprayed with the gun too close.
- (2) Spray stroke too slow (wet edge).
- (3) Air pressure is too high with a narrowed spray fan.

Solution for 1&2: Don't change pressure settings. Spray quick, light passes 2-3x faster than original application to blend the striping together.

Solution for 3: Increase fluid pressure or, preferably drop air pressure until under atomized. Spray quick, light passes until striping blends together.

DRY SPRAY (SAND LIKE TEXTURE):

- (1) Too much air pressure or not enough fluid pressure.
- (2) Spray gun too far from wall causing paint to partially dry in mid-air.
- (3) Gun was arched at top and bottom of stroke.

Solution: Once dry spray is detected, stop spraying. Let finish dry then lightly sand with fine-grit sandpaper.

Note: If texture becomes too course, the entire surface must be sanded smooth with fine-grit sandpaper.

When surface is smooth, apply a light pass of LiquaPearl.

BLOTCHY PATCHES:

- (1) Too much material applied at one time.
- (2) Did not allow enough dry time between coats.

Solution: Wait until finish is completely dry. Apply another very light pass of LiquaPearl. May need to apply 2-3 very light passes.

For Questions Call MDC Wall Finishes
at **1.800.621.4006** or visit **www.mdcwall.com**



©2015 MDC Wall Finishes
400 High Grove Blvd Glendale Heights, IL 60139
1.800.621.4006 | www.mdcwall.com